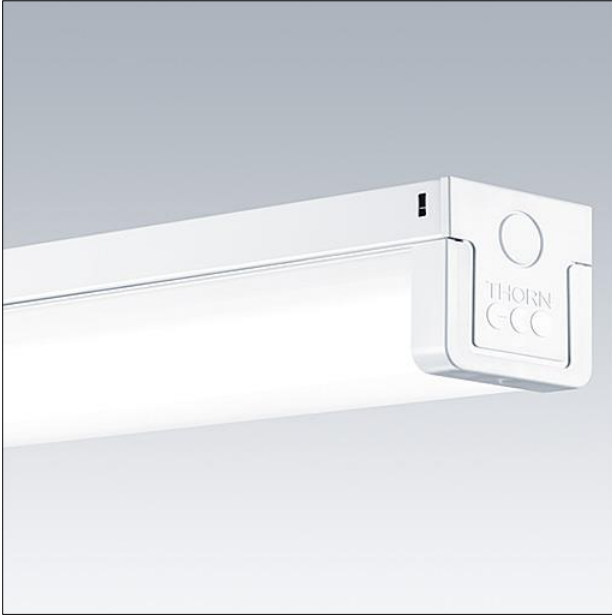


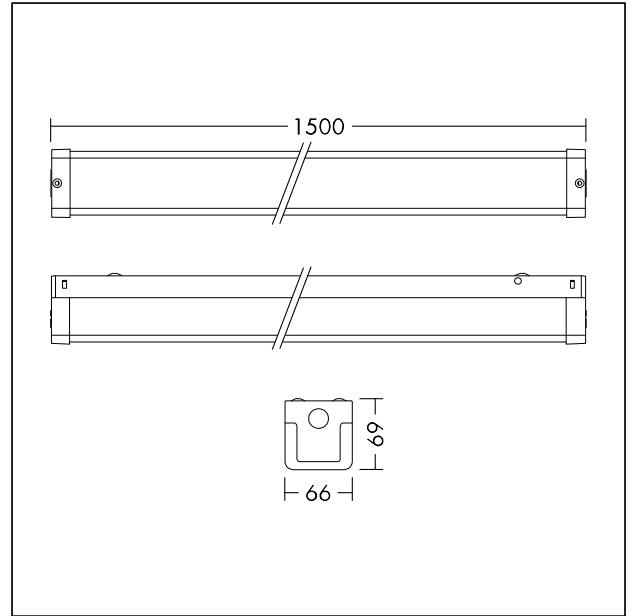
## Surface mounted LED luminaire

Batten with reliable integrated LED technology, ensuring maintenance-free installation and a long lifetime. High quality opal diffuser ensures homogeneous illumination. High efficacy of 100 lm/W, save up to 60% energy compared with T5 fluorescent battens. Direct replacement for conventional battens in terms of light performance and length.

Body: Stainless steel  
 Diffuser: PC, opal white  
 End caps: PC, white  
 Weight: 2 kg



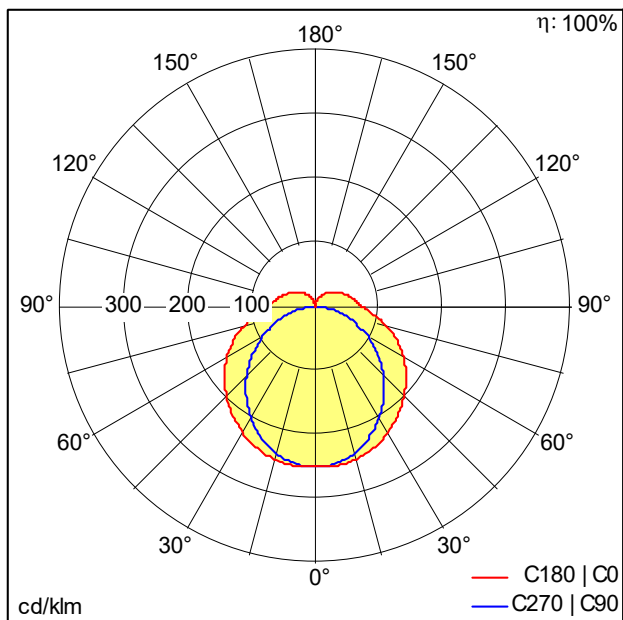
TE\_BARRY\_F\_1500\_PERSP.jpg



TE\_BARRY\_M\_1500.wmf

## Light Distribution

## STD - standard



TE\_BARRY\_LED\_1500\_6000\_865.idt

- Light Source: LED
- Luminaire luminous flux\*: 6000 lm
- Luminaire efficacy\*: 100 lm/W
- Colour Rendering Index min.: 80
- Correlated colour temperature\*: 6500 Kelvin
- Chromaticity tolerance (initial MacAdam): 5
- Rated median useful life\*:  
 L70 50000 h at 25 °C
- Ballast: 1x LED\_Con
- Luminaire input power\*: 60 W Power factor = 0.9
- Dimming: Fixed output
- Maintenance category CIE 97: D - Enclosed IP2X

All values marked with an \* are rated values. Connected electrical load and luminous flux are subject to an initial tolerance of +/- 10%, the most similar colour temperature is subject to an initial tolerance of +/- 150K. Unless stated otherwise, the values apply to an ambient temperature of 25°C.