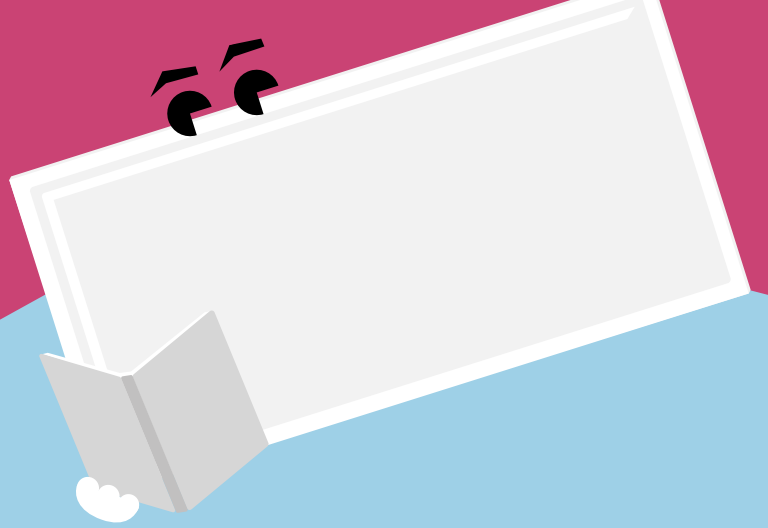


# Ruby

Recessed LED panel



## Meet Ruby

Sophisticated and compact, Ruby creates a pleasant atmosphere in communication areas

- Elegant and lightweight design with a evenly lit surface
- Replaces conventional luminaires with 4 x 36W T8 and 2 x 36W T8 and offers more than 40% energy saving
- Ideal solution for any refurbishment job
- Supplied with 3 pin flex & plug (1.5m length)
- Suitable for recessed, surface and suspended mounting



3200 & 4500 lumens, up to 100lm/W



1200 x 300mm and 1200 x 600mm



50 000 hours lifetime

### Ideal for...



Offices and meeting rooms



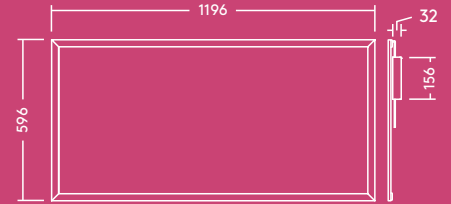
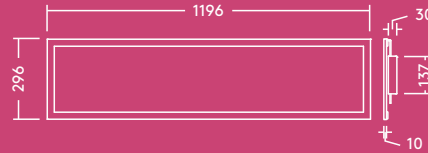
Schools and universities



Foyers and waiting-rooms

### Light source information

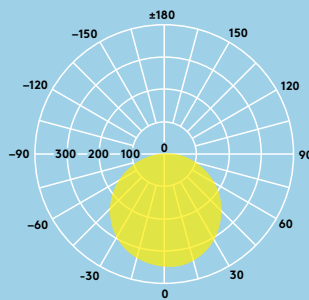
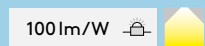
- 3200lm (32W), 4000K, 100 lm/W
- 4500lm (50W), 4000K, 90 lm/W
- CRI 80
- McAdam (initial): 4 step
- Beam angle: 110°



## Lighting distribution

### Ruby 3200lm

cd/klm ULOR: 0% DLOR: 100% LOR: 100%



## Ordering guide

Description	Wt (kg)	SAP Code
RUBY LED 1200x300 3200 840 FP	3.32	96628981
RUBY LED 1200x600 4500 840 FP	4.75	96628982
<b>Accessories</b>		
RUBY LED 1200 x 300 Suspension Kit		96629238
RUBY LED 1200 x 600 Suspension Kit		96629085

### Installation/Mounting

- Lay-in installation in T-bar ceiling grids
- Suitable for suspension and surface mounting (available as accessories)

### Material/Finish

Body: Aluminum, white finish (RAL 9003)  
 Diffuser: high uniformity PS diffuser  
 Light guide plate: PMMA

### Specification

- Class II electrical
- IP20
- Ambient operating temperature: -20 to +40 °C

