

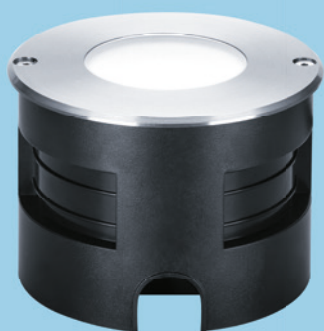
# Rosy

## LED Walkover Inground Luminaire



### Subtly stable Rosy illuminates your way, always in touch with others

- Strongly diffused uniform light surface to reduce perceived glare
- Compatible with THORNeco cable system
- Adaptor with open leads included
- Low overall height decreases required space and depth for installation
- High corrosion resistance (C4) and water ingress protection
- Suitable for installation in concrete/soil/wood



Sealed to IP66 & IP67 for exterior applications



IK09 rated impact resistance



50 000 hours lifetime



Connection cable with integrated waterstop



Compatible with THORNeco cable system

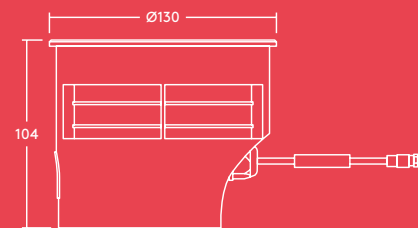
#### Ideal for...



Footpaths



Gardens



### Light source information

- 350lm (6W)
- 3000K
- Lifetime: 50000 hours rated life (@ L80, Ta 25°C)
- CRI80

### Specification

- Class I electrical
- IP66 & IP67
- IK09
- Ambient operating temperature: -20 to +50°C

### Installation/Mounting

- Suitable for installation in concrete/soil/wood
- Pre-wired with mains cable and adapter with open leads (1.5mm<sup>2</sup>)
- H07RN-F connection cable
- Salt resistant according to corrosion class C4


### Material/Finish

- Body: stainless steel AISI 316, aluminium die-cast
- Screws: hex socket, stainless steel AISI 316 with GEOMET<sup>®</sup> 500 coating
- Front cover: tempered frosted glass
- Sleeve: PC


## Ordering guide

Description	Wt (kg)	SAP Code
ROSY INGROUND IP67 350 830	0.95	96633582
<b>Accessories</b>		
ECO PIR SENSOR	0.36	96633592
ECO PC SENSOR	0.36	96634061


### Compatible THORNeco cable system




**MAINS ADAPTOR – 96633588**  
Connects luminaires of THORNeco cable system to mains (one side: Conny connector, other side: Female)




**EXTERNAL INTEGRATOR – 96633589**  
Connects luminaires of other suppliers to the THORNeco cable system (one side: Male, other side: Conny connector)



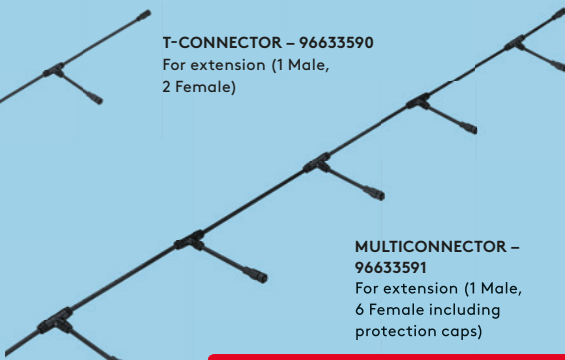
**EXTENSION CABLE**  
1m – 96633584    5m – 96633586  
2m – 96633585    10m – 96633587  
With Male/Female connector in different lengths (1m, 2m, 5m, 10m)



**CONNY IP68 CONNECTOR – 96632722**



**T-CONNECTOR – 96633590**  
For extension (1 Male, 2 Female)



**MULTICONNECTOR – 96633591**  
For extension (1 Male, 6 Female including protection caps)