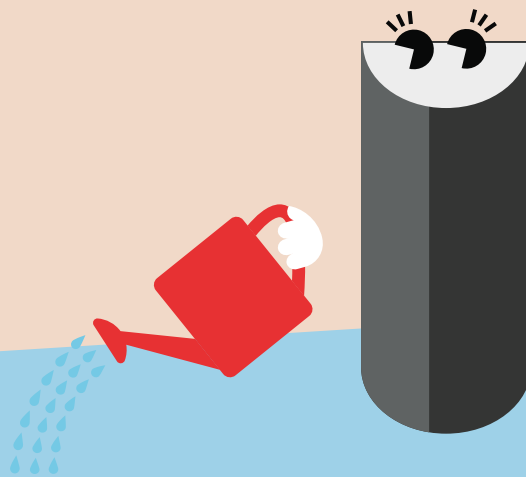


Holly

Wall-mounted LED Outdoor Luminaire



Pure and beautiful from within, Holly expresses herself on walls

- Elegant and timeless design
- 3 different designs (round, square, can)
- Versions with up/downlight or only downlight available
- Zero uplight versions available to reduce light pollution
- Special designed back plate provides more flexibility in mounting
- Fast and easy installation thanks to well positioned 3 pole terminal block



Sealed to IP65 for protected exterior applications



50 000 hours lifetime



IK04 rated impact resistance

Ideal for...



Building facades

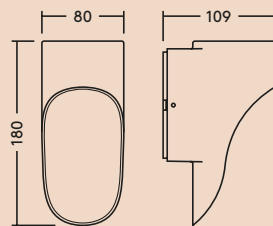


Residential

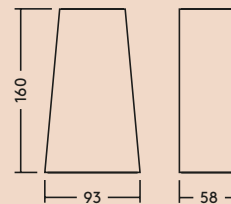
Special designed back plate provides more flexibility in mounting



Can version

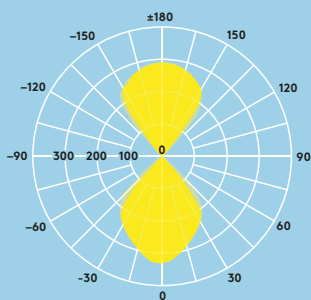


Round and square version



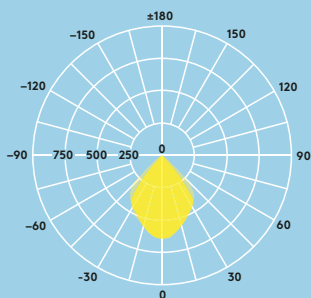
Lighting distribution

63lm/W



Holly UP/DOWN
cd/klm ULOR: 47 %
DLOR: 53 %
LOR: 100 %

60lm/W



Holly DOWN
cd/klm ULOR: 0 %
DLOR: 100 %
LOR: 100 %

Light source information

- 250 - 500lm
- 3000K
- Lifetime: 50000 hours rated life (@ L80, Ta 25°C)
- CRI 80

Specification

- Class I electrical
- IP65
- IK04
- Ambient operating temperature: -20 to +40°C

Ordering guide

Description	Wt (kg)	SAP Code
HOLLY CONE ROUND DOWN IP65 300 830	0.52	96633683
HOLLY CONE ROUND UP/DOWN IP65 500 830	0.52	96633684
HOLLY CONE SQUARE DOWN IP65 300 830	0.52	96633685
HOLLY CONE SQUARE UP/DOWN IP65 500 830	0.52	96633686
HOLLY WALL CAN DOWN IP65 250 830	0.50	96633687

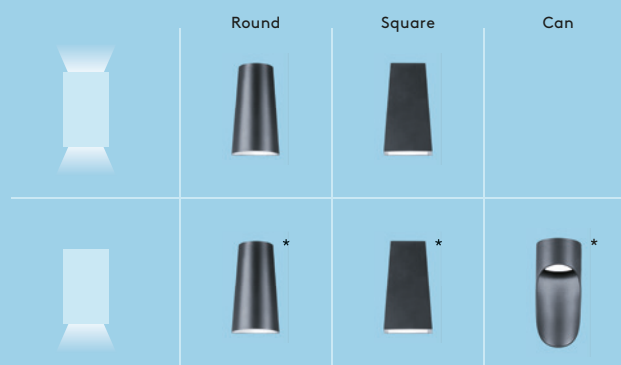
Installation/Mounting

- Fast and easy installation thanks to well positioned 3 pole terminal block
- Special designed back plate provides more flexibility in mounting

Material/Finish

Body: Aluminium die-cast RAL7016
Front cover: clear glass

Light output



*No light pollution, zero uplight