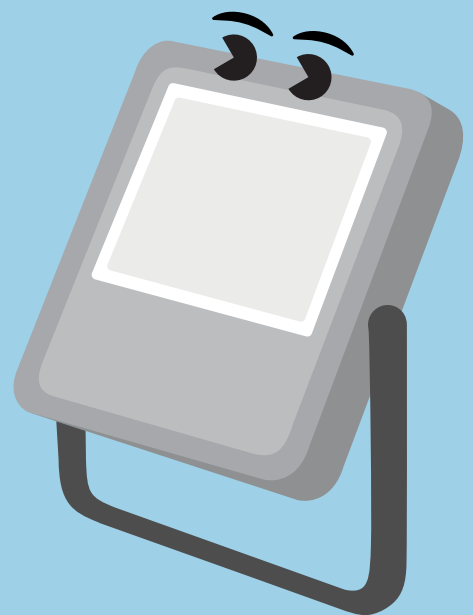
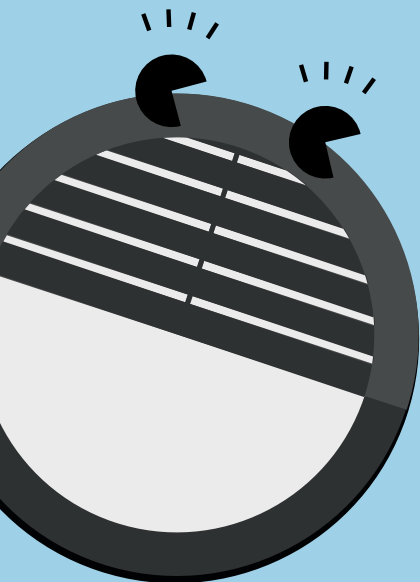


THORN



Economical LED lighting

11/2018



member of zumtobel group

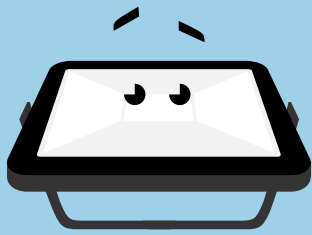


Meet the family

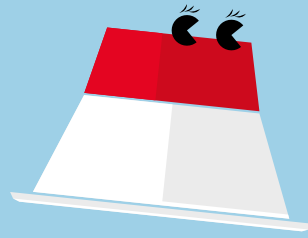
Introducing our range of best in class, economical LED luminaires. They're the ideal like-for-like replacements for all lighting sources – from industrial environments, to offices and outdoors. Simple to install, longer lasting and energy saving, you'll be friends in no time.

5 Five year guarantee





Alice
LED floodlight



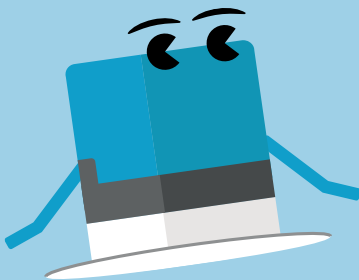
Amy
Recessed LED
Downlight



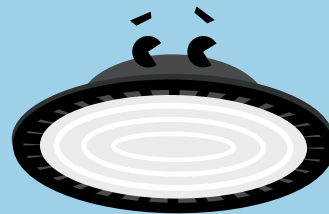
Anna
Recessed LED
panel



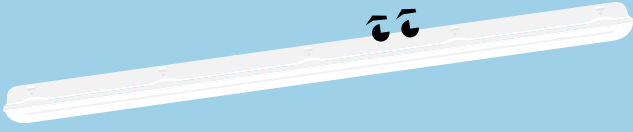
Elsa
Bathroom Mirror
Luminaire



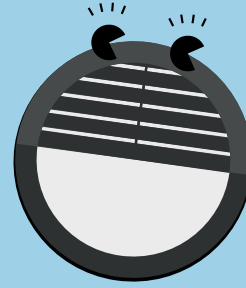
Fred
Fire-rated
Downlight



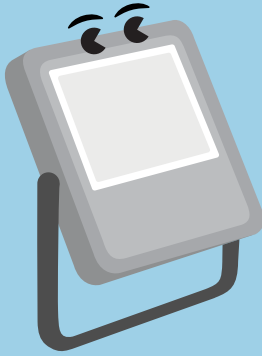
George
LED high bay



Julie
IP65 LED luminaire



Lara
Circular IP65
bulkhead



Leo
High power LED
floodlight



Mike
LED batten



Zoe
Slim downlight

Alice

LED floodlight

Meet Alice

Both strong and bright,
Alice is robust and
reliable no matter the
weather

- 5 different lumen packages from 10W to 100W
- Very lightweight, compact and streamline design
- Universal mounting bracket allows wall or surface mounting with the possibility of tilting upwards or downwards
- Pre-wired with mains cable



800, 1600,
2400, 4000
and 8000
lumens



Save up to
70% energy
compared
with halogen
floodlights



Sealed to IP65
for protected
exterior
applications



IK08 rated
impact
resistance

Ideal for...



Gardens



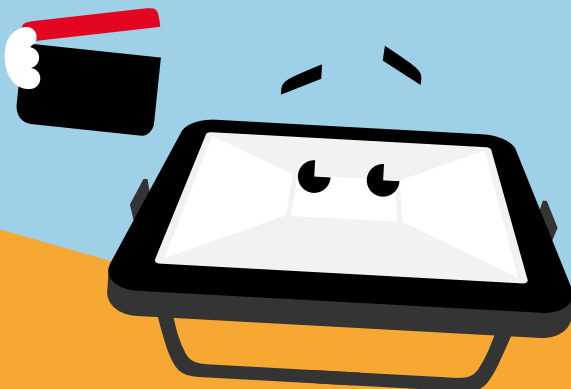
Car parks



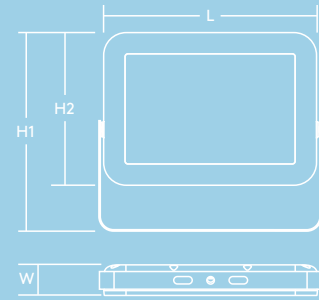
Building facades

Light source Information

- 800lm (10W), 80lm/W, 1600lm (20W), 80lm/W, 2400lm (30W), 80lm/W, 4000lm (50W), 80lm/W, 8000lm (100W), 80lm/W
- 4000K neutral white LED
- Lifetime: 35000 hour rated life (@L70B50, Ta 25°C)
- CRI80



	L	W	H1	H2
ALICE LED FL IP65 10W 840	130	26	126	92
ALICE LED FL IP65 20W 840	180	31	169	130
ALICE LED FL IP65 30W 840	180	31	169	130
ALICE LED FL IP65 50W 840	290	41	270	208
ALICE LED FL IP65 100W 840	360	42	331	268



Performance guide

Description	Lumen output	Alternative to Halogen	Alternative to Discharge
ALICE LED 10W	800lm	50W	
ALICE LED 20W	1600lm	100W	
ALICE LED 30W	2400lm	150W	
ALICE LED 50W	4000lm	250W	70W
ALICE LED 100W	8000lm	400W	150W

The above table is a guide for replacement of traditional floodlights, using the closest LED alternative offer.

Ordering guide

Description	Wt (kg)	Cat. No.
ALICE LED FL IP65 10W 840	0.4	AC10W
ALICE LED FL IP65 20W 840	0.75	AC20W
ALICE LED FL IP65 30W 840	0.75	AC30W
ALICE LED FL IP65 50W 840	2.45	AC50W
ALICE LED FL IP65 100W 840	3.8	AC100W

Installation/Mounting

- Suitable for wall or ceiling mounting
- Quick and easy installation
- Pre-wired with mains cable and open cable ends with 1mm² cross section. 100 cm cable for 50 & 100 W flood-lights and 30 cm cable for 10, 20 & 30 W floodlights

Material/Finish

Glass: Tempered glass
 Reflector: Aluminum
 Body: Aluminum die-cast
 Screws: Stainless steel

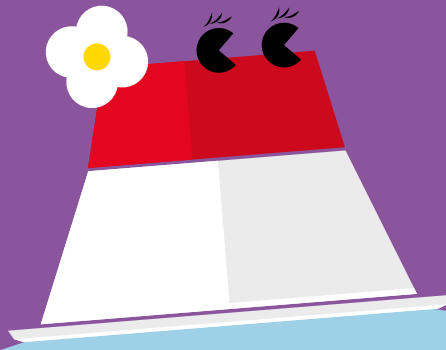


Specification

- Class I electrical
- IP65
- IK08

Amy

Recessed LED Downlight



Meet Amy

With a pleasing aesthetic; Amy is the ideal solution for a vast range of applications

- Consistent light output with no shadowing
- Replacement for traditional 1×18 W, 1×26 W, 2×18 W or 2×26 W compact fluorescent downlights
- Choice of 3000 K or 4000 K to suit application use
- Thermally optimised, deep drawn, aluminium body
- Easy, quick and tool-free installation thanks to an external connector box with a 4-pole push-terminal enabling loop-in loop-out wiring
- The fully detachable connector allows for first fix wiring and high voltage circuit testing whilst the luminaire is detached from the connector



800–2000 lumens, up to 95 lm/W



50 000 hours lifetime



Save up to 80% energy compared to compact fluorescent downlights



105, 150 and 200 mm cut-outs



3hr emergency version available

Ideal for...



Corridors



Reception areas



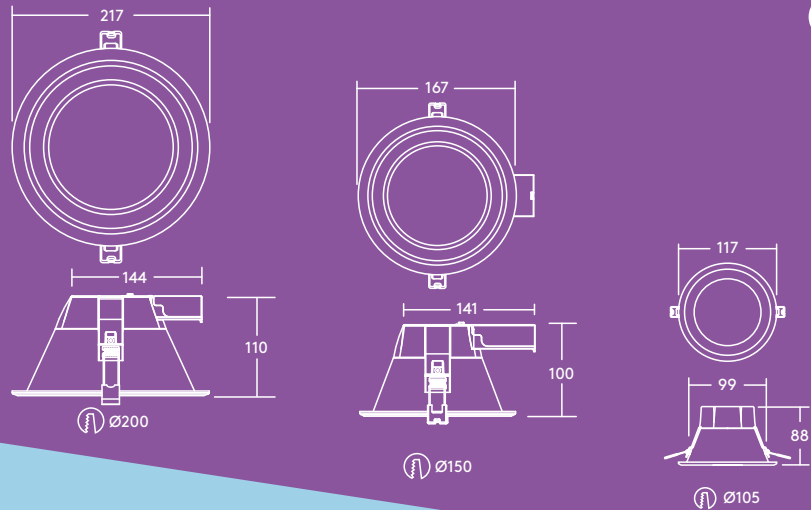
Offices and meeting rooms



Schools and universities

Light source information

- Lifetime 50 000 hours (@L70B50, Ta 25 °C)
- 800lm (9 W), 1000lm (12 W), 1500lm (16 W), 2000lm (21 W), up to 95 lm/W
- Colour temperatures: 4000K and 3000K
- CRI80
- McAdams (initial): 4 step



Performance guide

1000 lumens – Corridor

Ceiling height (m)	Luminaire Spacings (m)	Lux Level Average (E_m)	Uniformity (U_o)	UGR
2.4	3.6 (5 tiles)	76 lux	0.69	25
	3.0 (4 tiles)	90 lux	0.59	25
	2.4 (3 tiles)	113 lux	0.73	25
2.7	3.6 (5 tiles)	70 lux	0.71	25
	3.0 (4 tiles)	82 lux	0.63	25
	2.4 (3 tiles)	104 lux	0.73	25
3.0	3.6 (5 tiles)	64 lux	0.70	25
	3.0 (4 tiles)	75 lux	0.63	25
	2.4 (3 tiles)	96 lux	0.72	25

2000 lumens – Corridor

Ceiling height (m)	Luminaire Spacings (m)	Lux Level Average (E_m)	Uniformity (U_o)	UGR
2.4	3.6 (5 tiles)	140 lux	0.69	25
	3.0 (4 tiles)	164 lux	0.60	25
	2.4 (3 tiles)	208 lux	0.73	25
2.7	3.6 (5 tiles)	129 lux	0.70	25
	3.0 (4 tiles)	151 lux	0.63	25
	2.4 (3 tiles)	191 lux	0.73	25
3.0	3.6 (5 tiles)	118 lux	0.70	25
	3.0 (4 tiles)	138 lux	0.63	25
	2.4 (3 tiles)	176 lux	0.72	25

Based on a 21x2 metre corridor with 70/50/20 reflectances, a 0.80 maintenance factor and the floor as the working plane

Installation/Mounting

Amy LED can be installed into a wide range of ceiling types of 2–20mm thickness (AMY 150 and 200 LED DL) or 2–15mm thickness (AMY 100 LED DL).

Material/Finish

Body: Aluminum, white finish (RAL 9003)
Diffuser: Polycarbonate

Specification

- Class I electrical
- IP20
- IK02

Ordering guide

Description	Wt (kg)	Cat. No.
AMY 100 LED DL 800 830	0.18	AY800Z3K
AMY 100 LED DL 800 840	0.18	AY800Z4K
AMY 150 LED DL 1000 830	0.26	AY1000Z3K
AMY 150 LED DL 1000 840	0.26	AY1000Z4K
AMY 150 LED DL 1500 830	0.26	AY1500Z3K
AMY 150 LED DL 1500 840	0.26	AY1500Z4K
AMY 200 LED DL 2000 830	0.36	AY2000Z3K
AMY 200 LED DL 2000 840	0.36	AY2000Z4K
Emergency versions		
AMY 150 LED DL 1000 830 E3	0.66	AY1000ZE3K
AMY 150 LED DL 1000 840 E3	0.66	AY1000ZE4K
AMY 150 LED DL 1500 830 E3	0.66	AY1500ZE3K
AMY 150 LED DL 1500 840 E3	0.66	AY1500ZE4K
AMY 200 LED DL 2000 830 E3	0.76	AY2000ZE3K
AMY 200 LED DL 2000 840 E3	0.76	AY2000ZE4K
Lighting Control		
SWITCHLITE SLDM		SLMW30W
SWITCHLITE MRE SLDM ADJ		
SWITCHLITE CC PROGRAMMER		
830–3000K, 840–4000K		



Anna

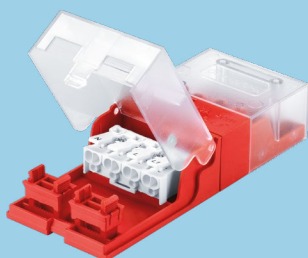
Recessed LED Panel



Meet Anna

Low glare and calm, Anna is the universal talent for desk space environments

- Gentle, soft and low glare lighting (<19 UGR) thanks to a Light Guide Plate with innovative laser engraving
- Smooth opal diffuser for fully homogeneous illumination
- Even surface and IP44 (from below) for hassle-free cleaning
- Elegant and timeless design with slim metal frame of only 8.5 mm depth
- Replaces conventional luminaires with 4x18 W T8 and offers up to 60% energy saving
- Easy, quick and tool-free installation thanks to an external connector box with a 4-pole push-terminal (for up to 2.5 mm² cables) enabling loop-in loop-out wiring
- The fully detachable connector allows for first fix wiring and high voltage circuit testing whilst the luminaire is detached from the connector



3500 lumens
106 lm/W
(4000K) and
3200 lumens
97 lm/W
(3000K)



IP44
(from below):
Splash
resistant for
hassle-free
cleaning



<19 UGR:
gentle, soft
and low glare
lighting for
office
applications



596 x 596 mm
and
1196 x 296 mm



3h emergency
version
available



50 000 hours
lifetime

Ideal for...



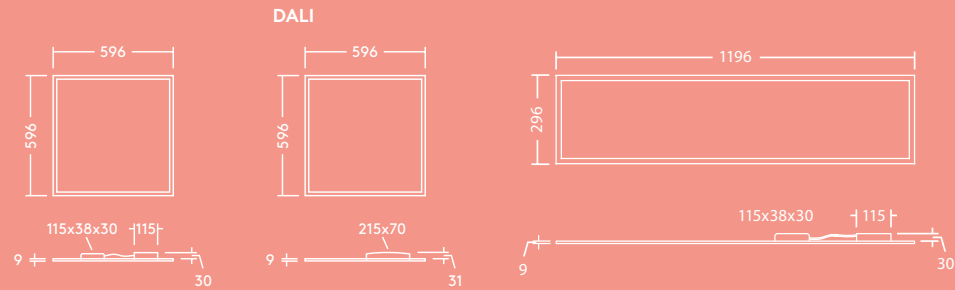
Offices and
meeting rooms



Schools and
universities

Light source information

- 4000 K, 3500 lm (33 W), 106 lm/W
- 3000 K, 3200 lm (33 W), 97 lm/W
- 50 000 hour rated life (@L70B50, T_a 25 °C)
- CRI 80
- McAdam (initial): 4 step
- <19 UGR



Performance guide

Anna - 3500 lumens

Ceiling height (m)	Luminaire Spacings (m)	Lux Level Average (E_m)	Uniformity (U_o)	UGR
2.4	3.0 x 3.0	375 lux	0,52	<17.6
	3.0 x 2.4	457 lux	0,59	<17.6
	2.4 x 2.4	558 lux	0,68	<17.6
2.7	3.0 x 3.0	363 lux	0,64	<17.6
	3.0 x 2.4	443 lux	0,71	<17.6
	2.4 x 2.4	539 lux	0,80	<17.6
3.0	3.0 x 3.0	353 lux	0,75	<17.5
	3.0 x 2.4	431 lux	0,80	<17.5
	2.4 x 2.4	525 lux	0,89	<17.5

Based on a 13.8 x 13.8 metre open plan office with 70/50/20 reflectances, a 0.80 maintenance factor and 0.8 working plane

Installation/Mounting

- Lay-in installation in T-bar ceiling grids
- Suitable for suspension, surface and recessed installation

Material/Finish

Frame: Aluminum, white (RAL 9003)
 Diffuser: PET, opal (TpB rated)
 Light guide plate: PS
 Backplate: Steel sheet

Specification

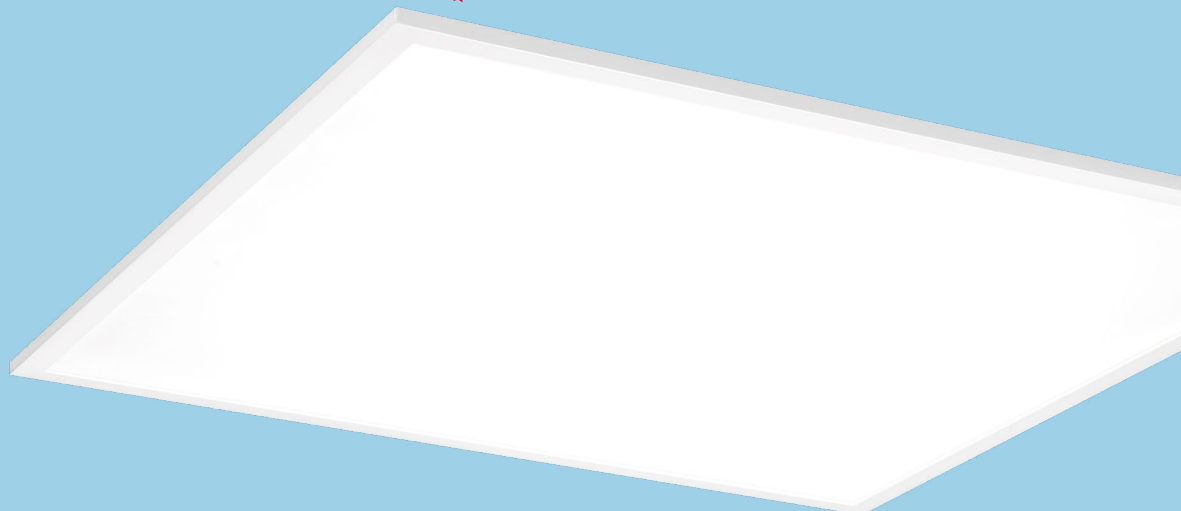
- Class II electrical
- IP44 (from below), IP20 (from above)
- IK02
- ENEC certified driver

Ordering guide

Description	Wt (kg)	Cat. No.
ANNA LED Q596 3500 840	2.58	AN3500Z4K
ANNA LED Q596 3200 830	2.58	AN3200Z3K
ANNA LED 1200x300 4200 840	2.68	AN4200Z4K
ANNA LED 1200x300 3800 830	2.68	AN3800Z3K
Emergency version		
ANNA LED Q596 3500 840 E3	3.31	AN3500ZE4K
DALI		
★ ANNA LED Q596 3500 840 HFIX	2.71	AN3500X4K
★ ANNA LED Q596 3200 830 HFIX	2.71	AN3200X3K
★ ANNA LED Q596 3500 840 HFIX E3	3.12	AN3500XE4K
Versions with TpA rated diffuser		
★ ANNA LED Q596 3500 840 TpA	2.76	AN3500Z4KTPA
★ ANNA LED Q596 3500 840 TpA E3	3.52	AN3500ZE4KTPA
★ ANNA LED Q596 3500 840 HFIX TpA	2.92	AN3500X4KTPA
★ ANNA LED Q596 3500 840 HFIX TpA E3	3.33	AN3500X4KTPA
Accessories		
ANNA Q596 Recessed Mount Box	2.0	ANRECBOX
ANNA Q596 Slim Surface Mount Box	2.0	ANSURBOX
ANNA 1200x300 Slim Surface Mount Box		AN12X3SURBOX
ANNA Suspension Kit	0.03	ANSUSKIT
ANNA 1200x300 Suspension Kit	0.2	AN12X3SUSKIT
★ ThornEco Connector	0.04	ECONEC

830-3000K, 840-4000K

★ New



Elsa

Bathroom Mirror Luminaire



Meet Elsa

Splash resistant,
practical and attractive
at the same time, Elsa
takes care of your looks

- Bathroom mirror luminaire with an elegant and timeless design
- Opal diffuser ensuring visual comfort and a fully homogeneous illumination
- Integrated on/off switch
- Tool-free wiring for quick installation
- 2 lengths: 600 mm with 1200 lm and 450 mm with 800 lm
- Presence sensor options available



800 lm and
1200 lm,
100 lm/W



IP44: splash
resistant



3000 K warm
white or
4000 K neutral
white



IK06 rated
impact
resistance



Presence
sensor
optional



50 000 hours
lifetime

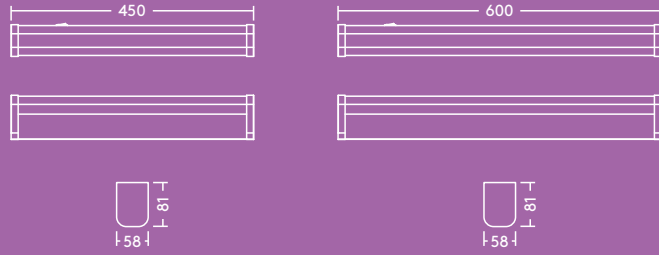
Ideal for...



Wash Rooms

Light source information

- 800 lm (8 W) & 1200 lm (12 W); 100 lm/W
- Color temperatures: 3000 K and 4000 K
- Life time 50 000 hours (@L70, Ta 25°C)
- CRI ≥ 80
- McAdam (initial): 6 step

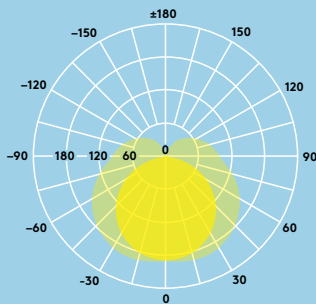


Lighting distribution

Elsa 800 lm

cd/klm ULOR: 0% DLOR: 78% LOR: 22%

100 lm/W



Ordering guide

Description	Wt. (kg)	Cat. No.
ELSA LED 600 1200 840 WH	0.8	EL1200Z4K
ELSA LED 600 1200 830 WH	0.8	EL1200Z3K
ELSA LED 600 1200 840 MWS WH	0.8	EL1200ZM4K
ELSA LED 600 1200 830 MWS WH	0.8	EL1200ZM3K
ELSA LED 450 800 840 WH	0.6	EL800Z4K
ELSA LED 450 800 830 WH	0.6	EL800Z3K
ELSA LED 450 800 840 MWS WH	0.6	EL800ZM4K
ELSA LED 450 800 830 MWS WH	0.6	EL800ZM3K

830–3000K, 840–4000K

Installation/Mounting

- Suitable for surface mounting
- Tool-free wiring with push terminal
- Sufficient space at the back of the batten for excess cable

Material/Finish

Body: Aluminum, white finish (RAL9016)
 Diffuser: PC, opal
 End cap: PC, white finish (RAL9016)

Presence sensor

Elsa's microwave sensor option will ensure that light is only delivered when needed. This sensor is a motion switch, which turns on the light on detection of movement, and turns off after a pre-selected hold-time when there are no people around. A daylight sensor is also built-in to prevent the light switching on when there is sufficient natural light (above 25 lux).

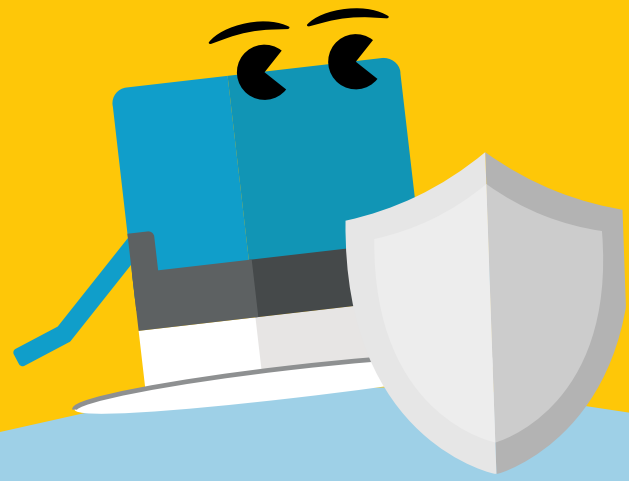
Specification

- ENEC certified driver
- Class II electrical
- IP44
- IK06



Fred

Fire-rated Downlight



Meet Fred

Brave and solid, Fred is a fire-rated everyday hero

- Recessed IP65 fire-rated downlight, including white bezel and lens with 38° beam angle
- Highly efficient and economical downlight, fully fire-rated for 30, 60 & 90 minute ceilings
- Easily exchangeable bezels: swap white with chrome, satin chrome or bronze (available as accessories)
- Adapt the light distribution by exchanging the 38° lens with a 24°/45°/60° beam angle lens or a 15° wall wash optic (available as accessories)
- The fully detachable connector allows for first fix wiring and high voltage circuit testing whilst the luminaire is detached from the connector
- Tool free and fast wiring thanks to the press-fit terminal block enabling convenient loop-in loop-out
- Groove heatsink design for ideal dissipation of heat
- Integrated LED driver suitable for use with leading-edge dimmer switches from approved manufacturers
- Suitable for use in bathrooms
- Ideal one to one replacement for 35W halogen downlights and up to 90% energy saving



550 lumens at
80 lm/W



50 000 hours
lifetime



Dimmable



IP65 (from
below):
Dust tight
and water
resistant



Fully fire-
rated for 30,
60 and 90
minute ceilings



3000 K
warm white or
4000 K
neutral white

Ideal for...



Retail shops



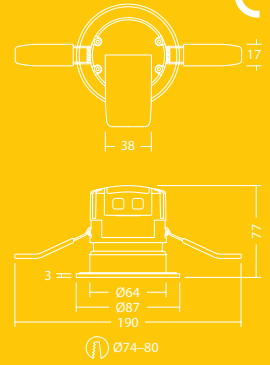
Schools and
universities



Hotels

Light source information

- 550 lm (7W); 80 lm/W
- Color temperature 3000K and 4000 K
- Life time 50 000 hours (@L70, Ta 25°C)
- CRI ≥ 80
- McAdam (initial): 6 step



Cone diagram*

Distance [m]	Cone Diameter [m]	Illuminance [lx]	
0.5	0.45	E(0°)	2481
		E(C0) 24.1°	946
1.0	0.89	E(0°)	620
		E(C0) 24.1°	237
1.5	1.34	E(0°)	276
		E(C0) 24.1°	105
2.0	1.79	E(0°)	155
		E(C0) 24.1°	59
2.5	2.24	E(0°)	99
		E(C0) 24.1°	38
3.0	2.68	E(0°)	69
		E(C0) 24.1°	26

— C0 - C180 (Half-value Angle: 48.2°)

* Cone diagram is showing the fitting with the 46° lens

Ordering guide

Description	Wt (kg)	Cat. No.
FRED LED IP65 75 550 840	0.5	FR550Z4K
FRED LED IP65 75 550 830	0.5	FR550Z3K
Accessories		
FRED TRIM CHR		FRTRMC
FRED TRIM SAT		FRTRMSAC
FRED TRIM BRO		FRTRMBR
FRED TRIM GLOSSY WH		FRTRMGW
FRED TRIM MATT BLK		FRTRMB
FRED LENS 24°		FRLNS24
FRED LENS 46°		FRLNS46
FRED LENS 60°		FRLNS60
FRED LENS 15° WALL WASH		FRLNSWW
Spare parts		
FRED LENS 38°		FRLNS38
FRED TRIM MATT WH		FRTRMW

Installation/Mounting

- Fred fire-rated downlight can be installed into a wide range of ceiling types.
- Mineral wool insulation can be placed directly over the top of the fitting

Material/Finish

Body: Aluminum heat sink & steel housing
 Bezel trim: Aluminum die-cast, white
 Lens: PMMA
 Cover: PC

Specification

- Class II electrical
- IP65 (from below), IP20 (from above)
- IK04



George

LED high bay



Meet George

Reliable, efficient and bright, George feels comfortable in high ceilings

- George offers a simple, direct and cost-effective one-for-one replacement of traditional HID high bay luminaires and saves up to 50% energy
- Efficient LEDs (120 lm/W) combined with a lens technology offering a beam angle of 65° to reduce waste light
- With a long 50 000-hour lifetime, George eliminates the need for costly and disruptive lamp replacements
- The housing is carefully designed to allow air through the luminaire. This prevents the components from overheating and ensures optimum performance in industrial environments
- Including connector for easy wiring



12 000 –
30 000 lumens



50 000 hours
lifetime



IK08 rated
impact
resistance



65° beam
angle



IP65: Dust
tight and
water
resistant



Reduced glare
meeting the
standard
of heavy
industry work
regulations

Ideal for...



Retail outlets



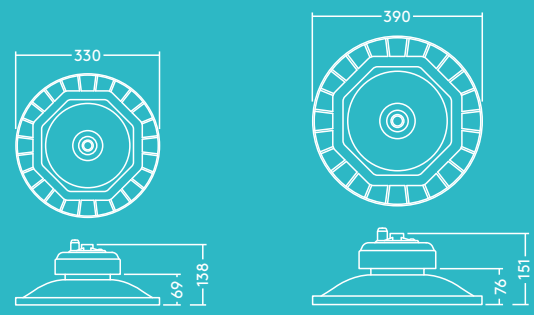
Exhibition Halls



Warehouses

Light source information

- Lifetime 50 000 hours (@L70B50, Ta 25 °C)
- 12 000 lm (100 W), 18 000 lm (150 W), 24 000 lm (200 W), 30 000 lm (250 W), up to 120 lm/W
- Colour temperature: 4000 K
- <25 UGR
- CRI 80
- McAdams (initial): 5 step



Performance guide

12 000 lumens - Warehouse

Mounting height (m)	Target lux level (lx)	Luminaire Qty	Lux level average (E_m)	Uniformity (U_o)	UGR
6	200	4 W, 7 L	215	0.62	<23.5
	300	4 W, 10 L	303	0.68	<23.5

18 000 lumens - Warehouse

Mounting height (m)	Target lux level (lx)	Luminaire Qty	Lux level average (E_m)	Uniformity (U_o)	UGR
8	200	3 W, 6 L	197	0.56	<23.5
	300	4 W, 7 L	300	0.60	<23.5

24 000 lumens - Warehouse

Mounting height (m)	Target lux level (lx)	Luminaire Qty	Lux level average (E_m)	Uniformity (U_o)	UGR
10	200	3 W, 5 L	204	0.53	<23.5
	300	3 W, 8 L	327	0.55	<23.5

30 000 lumens - Warehouse

Mounting height (m)	Target lux level (lx)	Luminaire Qty	Lux level average (E_m)	Uniformity (U_o)	UGR
12	200	3 W, 5 L	238	0.50	<23.5
	300	3 W, 7 L	337	0.50	<23.5

Installation/Mounting

- Single point suspension (mounting hook supplied with luminaire)
- Stirrup for wall/ceiling mounting (available as accessory)

Material/Finish

Body: Aluminum die-cast, black (RAL9017)
 Lens: PC

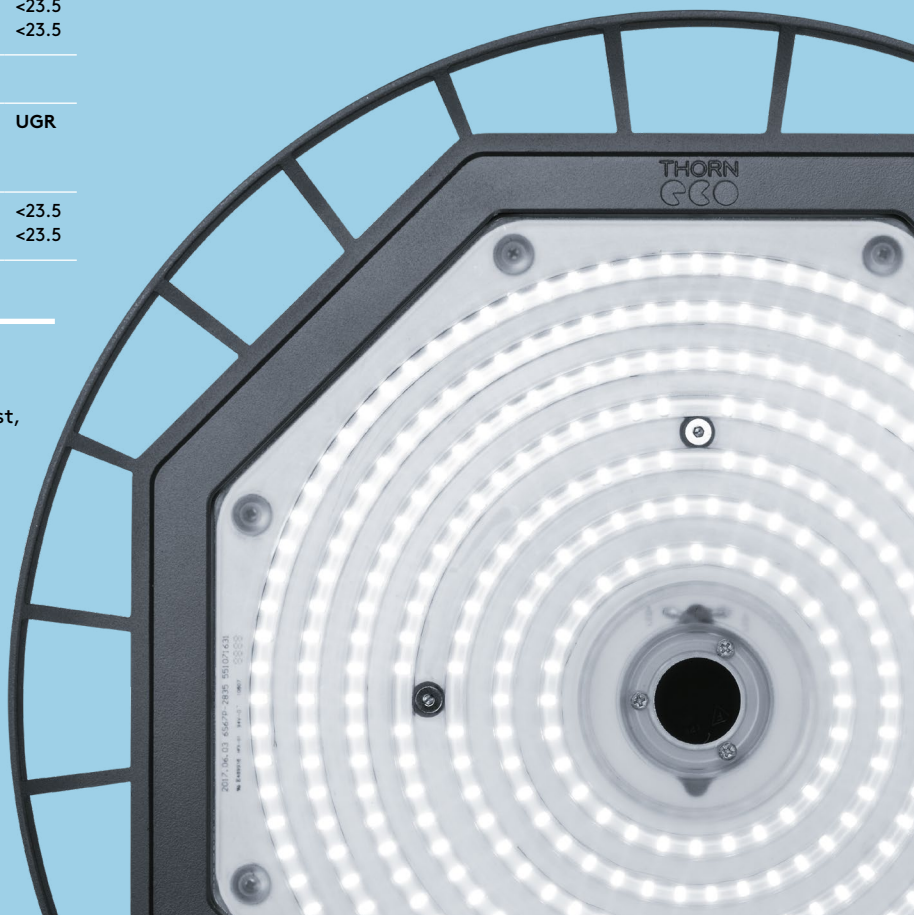
Specification

- Class I electrical
- IP65
- IK08
- Ambient operating temperature: -30 to +50°C

Ordering guide

Description	Wt (kg)	Cat. No.
GEORGE LED 330 12000 840 ¹	3.40	GO12000Z4K
GEORGE LED 330 18000 840 ²	3.80	GO18000Z4K
GEORGE LED 390 24000 840 ³	6.00	GO24000Z4K
GEORGE LED 390 30000 840 ³	6.00	GO30000Z4K
Mounting brackets		
SET OF GEORGE STIRRUP S (6pcs) ¹	0.37x6	GOSTS
SET OF GEORGE STIRRUP M (6pcs) ²	0.37x6	GOSTM
SET OF GEORGE STIRRUP L (6pcs) ³	0.47x6	GOSTL

¹²³The small numbers indicate how to match fittings and mounting brackets.



Julie

IP65 LED luminaire



Meet Julie

With a tough exterior, Julie is the optimal choice for industrial and commercial applications

- High quality, low energy lighting in wet and dusty environments
- High quality opal diffuser for uniform lighting
- Ideal for replacement and refurbishment projects
- CONNECT version with quick connector for easy installation available
- 1800 lm (20 W), 3000 lm (30 W), 4000 lm (40 W), 6000 lm (60 W), 8000 lm (80 W) up to 100 lm/W
- Colour Temperature 4000 K
- Versions with presence sensor and corridor function



IP65:
Dust tight and water resistant



Save up to 60% energy compared to T8 fluorescent



IK08 rated
impact resistance



632 mm (2 ft)
1232 mm (4 ft)
1532 mm (5 ft)
1800 mm (6 ft)



3h emergency version available



Presence sensor with corridor function

Ideal for...



Car parks



Workshops



Underpasses



Storage facilities

Installation/Mounting

Suitable for surface mounting. 4 x 10 mm stainless steel self-tapping screws (not included) can be applied to prevent unauthorised opening of the luminaire.

Material/Finish

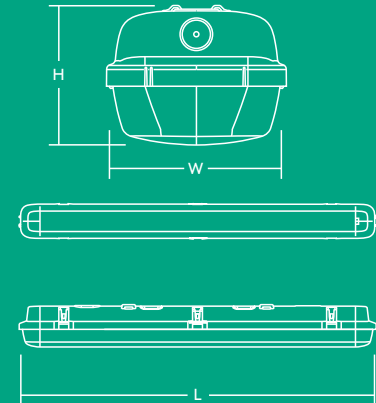
Canopy: Polycarbonate
Diffuser: Opal polycarbonate (UV stabilised)
Bracket: Stainless steel

Specification

- Class I electrical
- IK08
- IP65
- ENEC certified driver

L W H

JULIE 600 LED IP65 1800	632	103	78
JULIE 1200 LED IP65 3000	1232	85	71
JULIE 1200 LED IP65 4000	1232	103	78
JULIE 1500 LED IP65 4000	1532	85	71
JULIE 1500 LED IP65 6000	1532	103	78
JULIE 1800 LED IP65 8000	1800	103	78



Performance guide

4000 lumens – Open plan mezzanine floor

Ceiling height (m)	Luminaire Spacings (m)	Lux Level Average (E_m)	Uniformity (U_o)	UGR
2.4	3.4 × 3.4	236 lux	0.82	25
	2.3 × 3.4	342 lux	0.82	25
	2.3 × 2.3	519 lux	0.78	25
3.0	3.4 × 3.4	222 lux	0.77	25
	2.3 × 3.4	330 lux	0.75	25
	2.3 × 2.3	486 lux	0.74	25
3.5	3.4 × 3.4	208 lux	0.75	25
	2.3 × 3.4	312 lux	0.73	25
	1.8 × 2.8	518 lux	0.72	25

2000 lumens – Open plan mezzanine floor

Ceiling height (m)	Luminaire Spacings (m)	Lux Level Average (E_m)	Uniformity (U_o)	UGR
2.4	4.6 × 4.6	206 lux	0.72	25
	3.4 × 3.4	355 lux	0.84	25
	2.3 × 3.4	546 lux	0.81	25
3.0	4.6 × 4.6	197 lux	0.75	25
	3.4 × 3.4	343 lux	0.78	25
	2.3 × 3.4	512 lux	0.75	25
3.5	3.4 × 4.3	246 lux	0.74	25
	3.4 × 2.4	325 lux	0.75	25
	2.8 × 2.8	506 lux	0.73	25

Based on a 13.8 × 13.8 metre open plan mezzanine floor with 70/50/20 reflectances, a 0.80 maintenance factor and the floor as the working plane.

Light source information

- Lifetime 50 000 hours (@L70B50, Ta 25 °C)
- 1800lm (20W), 3000lm (30W), 4000lm (40W), 6000lm (60W), 8000lm (80W), up to 100lm/W
- Colour temperature 4000K
- CRI 80
- McAdams (initial): 4 step

Presence sensor with corridor function

Julie's microwave sensor option with corridor function will ensure that you never walk in the dark. The motion detection range, standby dimming level and the stand-by period are fully adjustable, with the additional benefit of a daylight sensor.

Ordering guide

Description	Wt (kg)	Cat. No.
JULIE 600 LED IP65 1800 840	1.03	JU1800Z2F
★ JULIE 1200 LED IP65 3000 840	1.30	JU3000Z4F
JULIE 1200 LED IP65 4000 840	1.50	JU4000Z4F
JULIE 1500 LED IP65 4000 840	1.56	JU4000Z5F
JULIE 1500 LED IP65 6000 840	1.95	JU6000Z5F
★ JULIE 1800 LED IP65 8000 840	2.20	JU8000Z6F
JULIE 1200 LED IP65 4000 840 CONNECT	1.60	JU4000ZQC4F
JULIE 1500 LED IP65 6000 840 CONNECT	2.05	JU6000ZQC5F
★ JULIE 1800 LED IP65 8000 840 CONNECT	2.40	JU8000ZQF6F
JULIE 1200 LED IP65 4000 840 COR MWS	1.95	JU4000ZCM4F
JULIE 1500 LED IP65 4000 840 COR MWS	2.05	JU4000ZCM5F
JULIE 1500 LED IP65 6000 840 COR MWS	2.35	JU6000ZCM5F
JULIE 1200 LED IP65 4000 840 COR MWS CON	2.05	JU4000ZQCM4F
JULIE 1500 LED IP65 6000 840 COR MWS CON	2.45	JU6000ZQCM5F
Emergency versions		
★ JULIE 1200 LED IP65 3000 840 E3	2.00	JU3000ZE4F
JULIE 1200 LED IP65 4000 840 E3	2.15	JU4000ZE4F
JULIE 1500 LED IP65 4000 840 E3	2.20	JU4000ZE5F
JULIE 1500 LED IP65 6000 840 E3	2.60	JU6000ZE5F
★ JULIE 1800 LED IP65 8000 840 E3	2.20	JU8000ZE6F
★ JULIE 1200 LED IP65 4000 840 COR MWS E3	2.60	JU4000ZECM4F
★ JULIE 1500 LED IP65 4000 840 COR MWS E3	2.65	JU4000ZECM5F
★ JULIE 1500 LED IP65 6000 840 COR MWS E3	3.05	JU6000ZECM5F
Spare part		
JULIE LED Spare Mount Kit	0.10	JUACCKIT
JULIE LED CONNECT Spare Mount Kit	0.10	JUCONKIT
★ JULIE LED Suspension Kit	0.03	JUSUSKIT

Lighting Control

SWITCHLITE SLD BATTEN PIR

SWITCHLITE CC PROGRAMMER

MWS: Microwave presence sensor COR: corridor function TW: through-wired

CONNECT: with quick connector

★ New

Lara

Circular IP65 bulkhead



Meet Lara

Sporting many different looks, Lara is the ultimate choice for a range of indoor and outdoor settings

- 800lm LED (direct replacement for 1x16W 2D), 1200lm LED and 2000lm LED (direct replacement for 1x28W 2D)
- Frosted diffuser ensures a homogeneous light effect and visual comfort
- Sealed to IP65 for protected exterior applications
- Robust construction tested up to IK08 impact resistance
- Optional trim accessories in black (bezel, eyelid, eyelid grille and grille), white and silver
- 2 Colours of the fitting: white (RAL 9003) and black (RAL 9011)
- Optional: Integral photocell or microwave presence sensor maximising the energy saving potential

Specification

- Class II electrical
- IP65
- IK08
- ENEC certified driver



800, 1200 and 2000 lumens, up to 100lm/W



50 000 hours lifetime



Save up to 70% energy compared with luminaires with 2D lamps



250, 300 and 330 mm diameter



3h emergency version available



Integral photocell or presence sensor

Ideal for...



Circulation Corridors



Public entrance areas



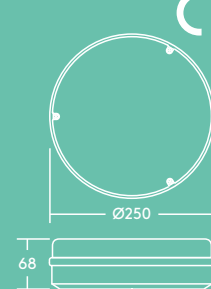
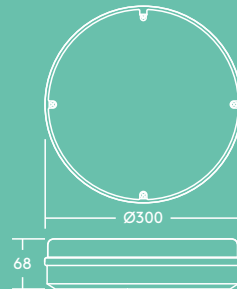
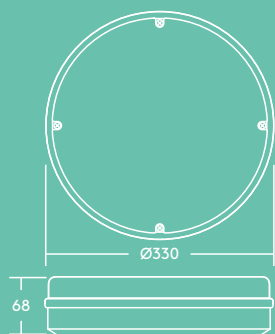
Underpasses



Stairwells

Light source information

- 2000lm (20W), 1200lm (13W) and 800lm (10W), up to 100lm/W
- 4000K neutral white LED
- Lifetime 50 000 hours (@L70B50, Ta 25°C)
- CRI 80



Bezel trim BLK

Bezel trim WH

Bezel trim SIL

Eyelid trim

Eyelid grille trim

Grille trim

Performance guide

800 lumens – Corridor

Ceiling height (m)	Luminaire Spacings (m)	Lux Level Average (E _m)	Uniformity (U _o)	UGR
2.4	3.0	63 lux	0.66	25
	2.4	80 lux	0.74	25
	1.8	101 lux	0.71	25
2.7	3.0	58 lux	0.66	25
	2.4	70 lux	0.71	25
	1.8	93 lux	0.70	25
3.0	3.0	54 lux	0.66	25
	2.4	68 lux	0.72	25
	1.8	91 lux	0.71	25

1200 lumens – Corridor

2.4	3.0	92 lux	0.64	25
	2.4	117 lux	0.73	25
	1.8	162 lux	0.74	25
2.7	3.0	85 lux	0.63	25
	2.4	108 lux	0.72	25
	1.8	150 lux	0.65	25
3.0	3.0	82 lux	0.66	25
	2.4	104 lux	0.72	25
	1.8	130 lux	0.55	25

Based on a 21×2 metre corridor with 70/50/20 reflectances, a 0.80 maintenance factor and the floor as the working plane.

Installation/Mounting

- Suitable for wall or ceiling mounting
- Quick and easy installation
- Suitable for BESA fixing

Material/Finish

Body: Polycarbonate
Diffuser: Polycarbonate

Integral photocell & presence sensor

Lara's integral photocell option will light from dusk till dawn. (Operation level: approx. 20 lux ON, approx. 30 lux OFF).

Lara's microwave sensor option will ensure that light is only delivered when needed. The motion detection range and time duration is fully adjustable.

Ordering guide

Description	Wt (kg)	Cat.No. (WH)	Cat.No. (BLK)	Cat.No. (SIL)
LARA LED 250 800 840	0.7	LAS800ZW4K	LAS800ZB4K	
LARA LED 250 800 840 E3	0.9	LAS800ZWE4K	LAS800ZBE4K	
LARA LED 300 1200 840	1.1	LAL1200ZW4K	LAL1200ZB4K	
LARA LED 300 1200 840 E3	1.2	LAL1200ZEW4K	LAL1200ZEB4K	
LARA LED 250 800 840 MWS	0.7	LAS800ZMW4K	LAS800ZMB4K	
LARA LED 250 800 840 MWS E3	0.9	LAS800ZMEW4K	LAS800ZMEB4K	
LARA LED 300 1200 840 MWS	1.1	LAL1200ZMW4K	LAL1200ZMB4K	
LARA LED 300 1200 840 MWS E3	1.2	LAL1200ZMEW4K	LAL1200ZMEB4K	
LARA LED 250 800 840 PC	0.7	LAS800ZPW4K	LAS800ZPB4K	
LARA LED 300 1200 840 PC	1.1	LAL1200ZPW4K	LAL1200ZPB4K	
LARA LED 300 1000 840 BEZEL TRIM	1.3	LAL1000ZW4KBEZW		
LARA LED 330 2000 840 BEZEL TRIM	1.6	LAL2000ZW4KBEZW		
LARA LED 330 1900 840	1.3	LAXL1900ZW4K		
LARA LED 330 1900 840 MWS	1.3	LAXL1900ZMW4K		
LARA LED 330 1900 840 E3	1.4	LAXL1900ZEW4K		
LARA LED 330 1900 840 MWS E3	1.4	LAXL1900ZMEW4K		
LARA LED 330 1900 830	1.3	LAXL1900ZW3K		
Accessories				
LARA BEZEL TRIM SMALL 250	0.2	LASBEZW	LASBEZB	LASBEZS
LARA BEZEL TRIM LARGE 300	0.2	LALBEZW	LALBEZB	LALBEZS
LARA BEZEL TRIM X-LARGE 330	0.3	LAXLBEZW		LAXLBEZS
LARA EYELID TRIM SMALL 250	0.2		LASEYEB	
LARA EYELID TRIM LARGE 300	0.3		LALEYEB	
LARA EYELID GRILLE TRIM SMALL 250	0.2		LASEYEGRIB	
LARA EYELID GRILLE TRIM LARGE 300	0.3		LALEYEGRIB	
LARA GRILLE TRIM SMALL 250	0.2		LASGRIB	
LARA GRILLE TRIM LARGE 300	0.3		LALGRIB	
LARA Tamperproof Screw Kit				LAVPSKIT

MWS: Microwave presence sensor

BLK: black; WH: white; SIL: silver

E3: 3 hour emergency lighting

PC: Photocell

Leo

High power LED floodlight



Meet Leo

Extremely powerful and resilient, Leo adds safety to dark areas

- 4 different lumen packages from 7500 to 20000 lm
- Asymmetrical light distribution – ideal for building facades and footpaths
- Integrated photocell for automatic light from dusk til dawn (can be activated/ deactivated)
- Compact and streamline design
- Universal mounting bracket allows wall or ceiling mounting with the possibility of tilting upwards or downwards
- Surge protection up to 10 kV to protect the product from short high voltage spikes caused e.g. by a lighting storm
- Climate membrane for automatic climate regulation inside the floodlight
- Pre-wired with mains cable (3m)



7500, 10000, 15000 and 20000 lumens



Sealed to IP66 for protected exterior applications



Save up to 70% energy compared with halogen floodlights



IK08 rated impact resistance



50 000 hours lifetime



Integral photocell

Ideal for...



Building facades



Car Parks



Footpaths



Loading bays

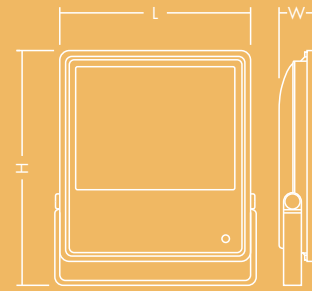
Light source information

- 7500 lm (75 W), 10000 lm (100 W), 15000 lm (150 W), 20000 lm (200 W), 100 lm/W
- 4000 K neutral white LED
- Life time 50 000 hours (@L70B50, T_a 25°C)
- CRI ≥ 80
- McAdam (initial): 5 step
- Beam angle: 100x55°

Specification

- Class I electrical
- IP66
- IK08
- Ambient operating temperature: -20 to +50 °C

	L	W	H
LEO LED FL IP65 75W 840	272	67	347
LEO LED FL IP65 100W 840	272	67	347
LEO LED FL IP65 150W 840	366	72	456
LEO LED FL IP65 200W 840	366	72	456



Performance guide

Leo LED FL IP65 75W 840 PC

Wattage (W)	Mounting height (m)	Width (W) x Length (L) (m)	Average Horizontal Illuminance	Uni-formity (U_o)	Aiming Angle (α)
75	6	10 x 15	22	0.296	20

Leo LED FL IP65 100W 840 PC

Wattage (W)	Mounting height (m)	Width (W) x Length (L) (m)	Average Horizontal Illuminance	Uni-formity (U_o)	Aiming Angle (α)
100	6	10 x 15	30	0.254	20

Leo LED FL IP65 150W 840 PC

Wattage (W)	Mounting height (m)	Width (W) x Length (L) (m)	Average Horizontal Illuminance	Uni-formity (U_o)	Aiming Angle (α)
150	8	20 x 20	18	0.208	20
150	10	25 x 20	13	0.239	20

Leo LED FL IP65 200W 840 PC

Wattage (W)	Mounting height (m)	Width (W) x Length (L) (m)	Average Horizontal Illuminance	Uni-formity (U_o)	Aiming Angle (α)
200	12	30 x 30	11	0.18	20
200	15	35 x 25	9	0.24	20

Installation/Mounting

- Suitable for wall or ceiling mounting
- Quick and easy installation thank to universal mounting bracket (0-300°)
- Pre-wired with 3m long mains cable and open cable ends with 1mm² cross section

Material/Finish

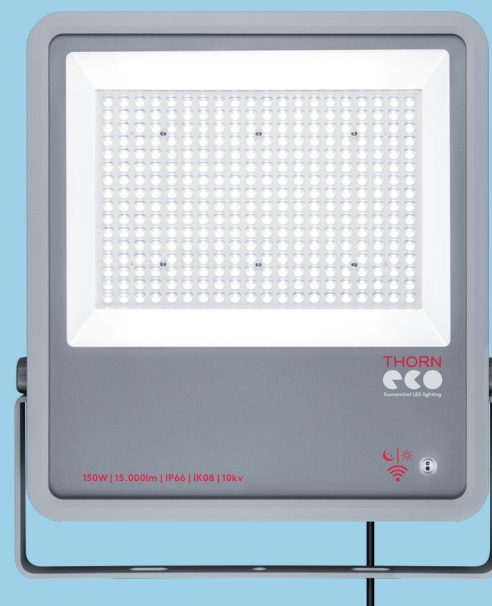
Body: Aluminum die-cast (<5% copper)
 Bracket: Carbon steel, gray (RAL 9006)
 Cover: Tempered glass
 Lens: PC

Ordering guide

Description	Wt (kg)	Cat. No.
LEO LED FL IP66 75W 840 PC	4.1	LEO75W
LEO LED FL IP66 100W 840 PC	4.2	LEO100W
LEO LED FL IP66 150W 840 PC	7.1	LEO150W
LEO LED FL IP66 200W 840 PC	7.1	LEO200W

Integral photocell

Leo's integral photocell can easily be activated/deactivated by using the on/off switch on the back of the product. If the photocell is activated, Leo will automatically light from dusk til dawn. (Operation level: approx. 20lux ON, 75 lux OFF)



Mike

Undercabinet LED Batten



Meet Mike

A reliable and compact LED batten, Mike helps provide an ambient environment

- High quality diffuser ensures uniform light without visible spots
- Can be individual or continuous mounted (16 pcs of 600mm batten & 8 pcs of 1200mm batten)
- Supplied complete with starter lead, mounting kit, connector lead and end cap
- Mounting clips can be flexibly attached on the whole length of the batten



900 lm (11W) and 1800 lm (22W), up to 82 lm/W



40% energy savings compared to T5 fluorescent



1200 mm (1800 lm) and 600 mm (900 lm)

Ideal for...



Cove lighting



Cabinet lighting



Residential

Light source information

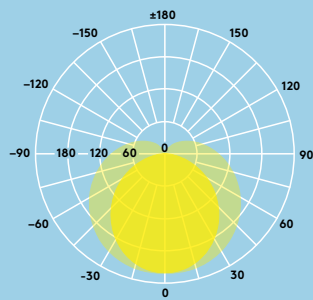
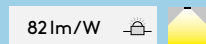
- Lifetime 50 000 hours (@L70B50, Ta 25 °C)
- 900 lm (11W), 1800 lm (22W), 82 lm/W
- Colour temperature 3000K and 4000K
- CRI 80
- McAdams (initial): 4 step



Lighting distribution

Mike 1200 mm 1800 lm

cd/klm ULOR: 23 % DLOR: 77 % LOR: 100 %



Ordering guide

Description	Wt (kg)	Cat. No.
MIKE LED 600 900 830	0.17	MI900Z3K2F
MIKE LED 600 900 840	0.17	MI900Z4K2F
MIKE LED 1200 1800 830	0.29	MI1800Z3K4F
MIKE LED 1200 1800 840	0.29	MI1800Z4K4F
Spare part		
MIKE Spare Mount Kit		MIACCKIT
830-3000K, 840-4000K		

Installation/Mounting

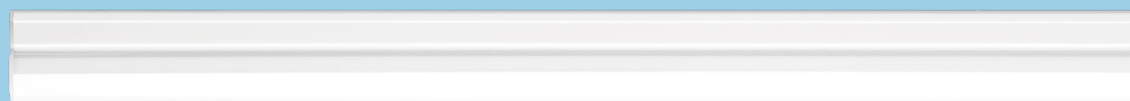
- Suitable for surface mounting.
- The fitting can be mounted individually or continuously (16 pcs of 600mm batten & 8 pcs of 1200mm batten)

Material/Finish

Body and diffuser: Dual-color extruded polycarbonate

Specification

- Class II electrical
- IP20
- IK02



Zoe

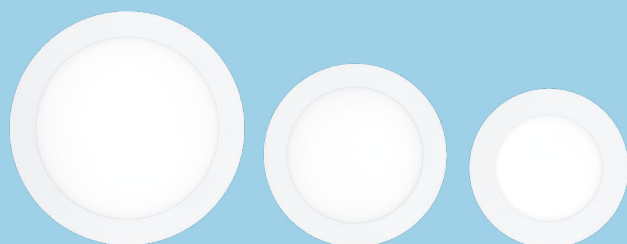
Slim downlight



Meet Zoe

Slim and adaptable,
Zoe is perfectly suited
to everyday needs

- Uniform light surface
- Product height of only 12mm: fits various ceiling types
- Choice of 3000K or 4000K to suit application use
- Replaces conventional downlights with 1x18W, 1x26W and 2x18W CFL and offers up to 50% energy saving
- Connector for tool-free wiring, also enabling loop-in loop-out
- Makes cleaning easy: flat surface and IP44 rating
- Suitable to use with the Just Emergency Plug&Play (Self Test) E3 KIT for 3 hours emergency operation (separately available)



2000 and
1500lm

900lm

600lm



Available in
600, 900,
1500 and 2000
lumen versions



110, 160
and 210mm
cut-outs



Save up to
50% energy
compared to
compact
fluorescent
downlights



IP44: splash
resistant
(from below)



35 000 hours
lifetime



3h emergency
version
available

Ideal for...



Corridors



Reception areas



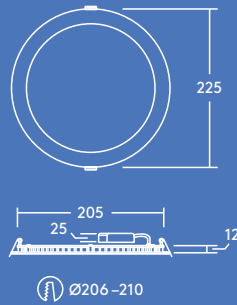
Offices and meeting rooms



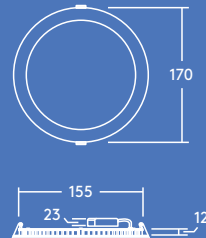
Schools and universities

Light source information

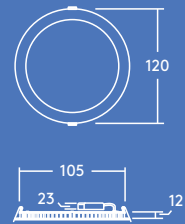
- 600lm (8W), 900lm (12W), 1500lm (18W) and 2000lm (22W) up to 91lm/W
- Color temperatures: 4000K and 3000K
- 35 000 hour rated life (@L70B50, Ta 25°C)
- CRI80
- McAdam (initial): 4 step



Ø206 - 210



Ø158 - 162



Ø108 - 112

Performance guide

1500 lumens – Corridor

Ceiling height (m)	Luminaire Spacings (m)	Lux Level Average (E_m)	Uniformity (U_o)	UGR
2.4	1.2	310 lux	0.71	25
	1.8	199 lux	0.71	25
	2.4	157 lux	0.73	25
	3.0	124 lux	0.66	25
	3.6	105 lux	0.73	25
2.7	1.2	274 lux	0.68	25
	1.8	183 lux	0.68	25
	2.4	138 lux	0.72	25
	3.0	114 lux	0.65	25
	3.6	97.1 lux	0.72	25
3.0	1.2	266 lux	0.70	25
	1.8	178 lux	0.70	25
	2.4	134 lux	0.71	25
	3.0	105 lux	0.66	25
	3.6	89.4 lux	0.72	25

Based on a 21.6 x 2 metre corridor with 70/50/20 reflectances, a 0.80 maintenance factor and the working plane at floor level

Ordering guide

Description	Wt (kg)	Cat. No.
ZOE LED DL 110 600 840	0.25	ZO600Z4K
ZOE LED DL 160 900 840	0.40	ZO900Z4K
ZOE LED DL 210 1500 840	0.55	ZO1500Z4K
ZOE LED DL 210 2000 840	0.55	ZO2000Z4K
ZOE LED DL 110 600 830	0.25	ZO600Z3K
ZOE LED DL 160 900 830	0.40	ZO900Z3K
ZOE LED DL 210 1500 830	0.55	ZO1500Z3K
ZOE LED DL 210 2000 830	0.55	ZO2000Z3K
Lighting Control		
SWITCHLITE SLDM		SLMW30W
SWITCHLITE MRE SLDM ADJ		
SWITCHLITE CC PROGRAMMER		
Accessories		
Just Emergency PLUG&PLAY E3 Kit		ECO3KIT
Just Emergency PLUG&PLAY Self Test E3 Kit		ECO3TKIT

830–3000K, 840–4000K

Installation/Mounting

- Recessed installation into a wide range of ceiling types
- Easy installation thanks to an external connector box enabling loop-in loop-out wiring

Material/Finish

Body: Aluminum white finish
Diffuser: PS

Specification

- Class II electrical
- IP44 (from below), IP20 (from above)
- IK02
- ENEC certified driver



Just Emergency



Accessory

PLUG&PLAY E3 Kit

It was never quicker and easier to convert a luminaire for emergency operation!

- The Kit has been designed to enable conversion of general lighting for emergency operation.
- The Just Emergency consisting of an Emergency LED driver, a NiMH battery for 3h emergency duration and an indicator LED.
- You can choose between two Emergency PLUG&PLAY E3 Kits: One with DALI AutoTest® function and one without it.
- DALI AutoTest® provides benefits by enabling testing and monitoring of an emergency lighting system either on-site or via an internet connection and is ideal for monitoring larger buildings and multiple sites.
- Quick and easy to install Plug & Play solution, which eliminates complexity from emergency lighting

Compatible with:



Zoe



Anna

The battery

The NiMH battery incorporates SmartCharge™ technology consisting of an intermittent charge duty cycle when in charge maintenance mode. This provides energy efficient charging, reduced operating temperatures and optimum service life of the battery. Manufactured by Mackwell in UK.

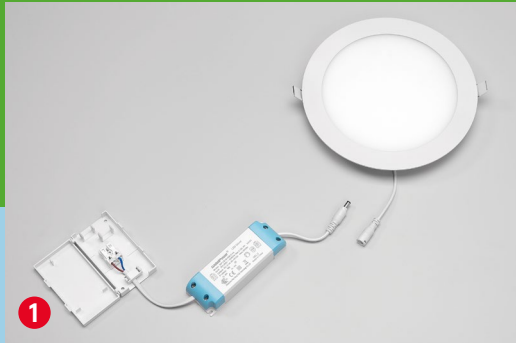
Battery specifications:

- SmartCharge™ technology for NiMH batteries
- 3-hour rated emergency duration
- deep-discharge protection
- charge current NiMH (4Ah): 200mA
- Initial charge period: 24 h

General product information:

- Power: 4 W
- Rated supply voltage : 230V
- Supply current (Max) : 25mA
- Supply frequency : 50/60Hz
- Power factor : 0.5 – 0.7
- LED voltage (Vf) : 6 to 55V
- Ambient temperature (ta) : 0°C to +35°C
- Maximum case temperature (tc) : +70°C
- Weight : 420g

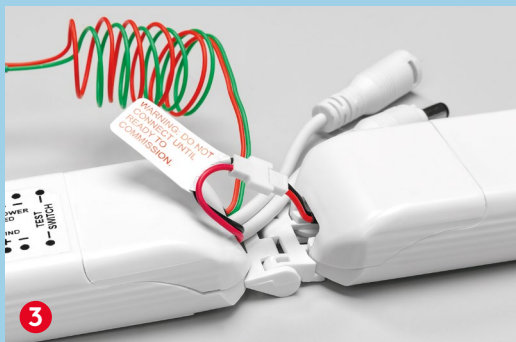
Description	Wt (kg)	SAP Code	Cat. No.
Just Emergency PLUG&PLAY E3 Kit	0.42	96628839	ECO3KIT
Just Emergency PLUG&PLAY SelfTest E3 Kit	0.42	96628840	ECO3TKIT



Unplug the connector between the Zoe slim downlight and the driver.



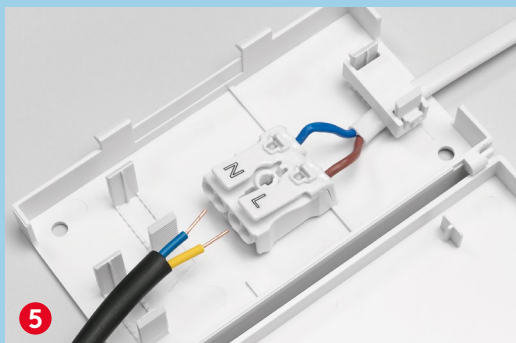
Just Emergency PLUG&PLAY E3 Kit consisting of an emergency LED driver, a battery and an indicator LED.



Connect the emergency LED driver to the battery.



Plug the emergency kit in-between the Zoe LED driver and the luminaire.



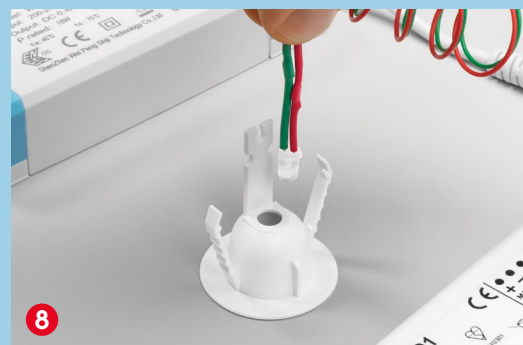
Take the cable, which is already connected to the emergency kit and plug it into the Zoe connector box (yellow cable: switched line out to L (phase conductor); blue cable: N to N (neutral conductor)).



Connect the mains cable to the emergency LED driver (neutral conductor and unswitched line) and fix the cables with the strain relief.



You're almost done - only one more step to consider!



Install the indicator LED in the ceiling next to the luminaire.

Glossary



Description	Wt (kg)	Cat. No.	SAP Code
ALICE LED FL IP65 10W 840	0.4	AC10W	96666073
ALICE LED FL IP65 20W 840	0.75	AC20W	96628836
ALICE LED FL IP65 30W 840	0.75	AC30W	96666074
ALICE LED FL IP65 50W 840	2.45	AC50W	96666075
ALICE LED FL IP65 100W 840	3.8	AC100W	96666076



Description	Wt (kg)	Cat. No.	SAP Code
AMY 100 LED DL 800 830	0.18	AY800Z3K	96665583
AMY 100 LED DL 800 840	0.18	AY800Z4K	96665584
AMY 150 LED DL 1000 830	0.26	AY1000Z3K	96628352
AMY 150 LED DL 1000 840	0.26	AY1000Z4K	96628353
AMY 150 LED DL 1500 830	0.26	AY1500Z3K	96665585
AMY 150 LED DL 1500 840	0.26	AY1500Z4K	96665586
AMY 200 LED DL 2000 830	0.36	AY2000Z3K	96665587
AMY 200 LED DL 2000 840	0.36	AY2000Z4K	96665588

Emergency versions

AMY 150 LED DL 1000 830 E3	0.66	AY1000ZE3K	96665848
AMY 150 LED DL 1000 840 E3	0.66	AY1000ZE4K	96665849
AMY 150 LED DL 1500 830 E3	0.66	AY1500ZE3K	96665844
AMY 150 LED DL 1500 840 E3	0.66	AY1500ZE4K	96665845
AMY 200 LED DL 2000 830 E3	0.76	AY2000ZE3K	96665846
AMY 200 LED DL 2000 840 E3	0.76	AY2000ZE4K	96665847

Lighting Control

SWITCHLITE SLDM		SLMW30W	96019208
SWITCHLITE MRE SLDM ADJ			96239855
SWITCHLITE CC PROGRAMMER			96240295



Description	Wt (kg)	Cat. No.	SAP Code
ANNA LED Q596 3500 840	3.3	AN3500Z4K	96630066
ANNA LED Q596 3200 830	3.5	AN3200Z3K	96630069
ANNA LED Q596 3500 840 TpA	3.3	AN3500Z4KTPA	96630359

Emergency version

ANNA LED Q596 3500 840 E3	3.9	AN3500ZE4K	96630068
ANNA LED Q596 3500 840 TpA E3	3.9	AN3500ZE4KTPA	96630360

Accessories

ANNA Q596 Recessed Mount Box		ANRECBOX	96630224
ANNA Q596 Slim Surface Mount Box		ANSURBOX	96630226
ANNA Suspension Kit		ANSUSKIT	96630223



Description	Wt (kg)	Cat. No.	SAP Code
ELSA LED 600 1200 840 WH	0.8	EL1200Z4K	96630327
ELSA LED 600 1200 830 WH	0.8	EL1200Z3K	96630328
ELSA LED 600 1200 840 MWS WH	0.8	EL1200ZM4K	96630329
ELSA LED 600 1200 830 MWS WH	0.8	EL1200ZM3K	96630330
ELSA LED 450 800 840 WH	0.6	EL800Z4K	96630376
ELSA LED 450 800 830 WH	0.6	EL800Z3K	96630377
ELSA LED 450 800 840 MWS WH	0.6	EL800ZM4K	96630378
ELSA LED 450 800 830 MWS WH	0.6	EL800ZM3K	96630379



Description	Wt (kg)	Cat. No.	SAP Code
FRED LED IP65 75 550 840	0.5	FR550Z4K	96630340
FRED LED IP65 75 550 830	0.5	FR550Z3K	96630341

Accessories

FRED TRIM CHR		FRTRMC	96630345
FRED TRIM SAT		FRTRMSAC	96630346
FRED TRIM BRO		FRTRMBR	96630390
FRED TRIM GLOSSY WH		FRTRMGW	96630573
FRED TRIM MATT BLK		FRTRMB	96630574
FRED LENS 15°		FRLNS15	96630392
FRED LENS 46°		FRLNS46	96630349
FRED LENS 60°		FRLNS60	96630350
FRED LENS 15° WALL WASH		FRLNSWW	96630391

Spare parts

FRED LENS 38°		FRLNS38	96630348
FRED TRIM MATT WH		FRTRMW	96630344



Description	Wt (kg)	Cat. No.	SAP Code
GEORGE LED 330 12000 840 ¹	3.40	GO12000Z4K	96630323
GEORGE LED 330 18000 840 ²	3.80	GO18000Z4K	96630324
GEORGE LED 390 24000 840 ³	6.00	GO24000Z4K	96630325
GEORGE LED 390 30000 840 ³	6.00	GO30000Z4K	96630326

Mounting brackets

SET OF GEORGE STIRRUP S (6pcs) ¹	0.37x6	GOSTS	96629371
SET OF GEORGE STIRRUP M (6pcs) ²	0.37x6	GOSTM	96629372
SET OF GEORGE STIRRUP L (6pcs) ³	0.47x6	GOSTL	96629373



Description	Wt (kg)	Cat. No.	SAP Code
JULIE 600 LED IP65 1800 840	1.20	JU1800Z2F	96628548
JULIE 1200 LED IP65 4000 840	1.50	JU4000Z2F	96665577
JULIE 1500 LED IP65 4000 840	1.56	JU4000Z5F	96628396
JULIE 1500 LED IP65 6000 840	1.95	JU6000Z5F	96665580
JULIE 1200 LED IP65 4000 840 CONNECT	1.56	JU4000ZQC4F	96665578
JULIE 1500 LED IP65 6000 840 CONNECT	1.95	JU6000ZQC5F	96665581
JULIE 1200 LED IP65 4000 840 COR MWS	1.6	JU4000ZCM4F	96630234
JULIE 1500 LED IP65 4000 840 COR MWS	1.6	JU4000ZCM5F	96630235
JULIE 1500 LED IP65 6000 840 COR MWS	2.0	JU6000ZCM5F	96630236
JULIE 1200 LED IP65 4000 840 COR MWS CON	1.6	JU4000ZQCM4F	96630237
JULIE 1500 LED IP65 6000 840 COR MWS CON	2.0	JU6000ZQCM5F	96630238

Emergency versions

JULIE 1200 LED IP65 4000 840 E3	1.90	JU4000ZE4F	96665579
JULIE 1500 LED IP65 4000 840 E3	1.96	JU4000ZE5F	96628397
JULIE 1500 LED IP65 6000 840 E3	2.35	JU6000ZE5F	96665582

Spare part

JULIE LED Spare Mount Kit		JUACCKIT	96628409
JULIE LED CONNECT Spare Mount Kit		JUONCKIT	96628410

Lighting Control

SWITCHLITE SLD BATTEN PIR			96601988
SWITCHLITE CC PROGRAMMER			96240295



Description	Wt (kg)	Cat. No.	SAP Code
LARA LED 250 800 840 WH	0.7	LAS800ZW4K	96666101
LARA LED 250 800 840 BLK	0.7	LAS800ZB4K	96666102
LARA LED 250 800 840 E3 WH	0.9	LAS800ZWE4K	96666103
LARA LED 250 800 840 E3 BLK	0.9	LAS800ZBE4K	96666104
LARA LED 300 1200 840 WH	1.1	LAL1200ZW4K	96666105
LARA LED 300 1200 840 BLK	1.1	LAL1200ZB4K	96666106
LARA LED 300 1200 840 E3 WH	1.2	LAL1200ZE4K	96666107
LARA LED 300 1200 840 E3 BLK	1.2	LAL1200ZEB4K	96666108
LARA LED 250 800 840 MWS WH	0.7	LAS800ZMW4K	96666109
LARA LED 250 800 840 MWS BLK	0.7	LAS800ZMB4K	96666110
LARA LED 250 800 840 MWS E3 WH	0.9	LAS800ZMEW4K	96666111
LARA LED 250 800 840 MWS E3 BLK	0.9	LAS800ZMEB4K	96666112
LARA LED 300 1200 840 MWS WH	1.1	LAL1200ZMW4K	96666113
LARA LED 300 1200 840 MWS BLK	1.1	LAL1200ZMB4K	96666114
LARA LED 300 1200 840 MWS E3 WH	1.2	LAL1200ZMEW4K	96666115
LARA LED 300 1200 840 MWS E3 BLK	1.2	LAL1200ZMEB4K	96666116
LARA LED 250 800 840 PC WH	0.7	LAS800ZPW4K	96666117
LARA LED 250 800 840 PC BLK	0.7	LAS800ZPB4K	96666118
LARA LED 300 1200 840 PC WH	1.1	LAL1200ZPW4K	96666120
LARA LED 300 1200 840 PC BLK	1.1	LAL1200ZPB4K	96666119
LARA LED 300 1000 840 BEZEL TRIM WH	1.3	LAL1000ZW4KBEZW	96628900
LARA LED 330 2000 840 BEZEL TRIM WH	1.6	LAL2000ZW4KBEZW	96630393
LARA LED 330 1900 840 WH	1.3	LAXL1900ZW4K	96629752
LARA LED 330 1900 840 MWS WH	1.3	LAXL1900ZMW4K	96629754
LARA LED 330 1900 840 E3 WH	1.4	LAXL1900ZE4K	96629755
LARA LED 330 1900 840 MWS E3 WH	1.4	LAXL1900ZMEW4K	96629756
LARA LED 330 1900 830 WH	1.3	LAXL1900ZW3K	96629753
Accessories			
LARA BEZEL TRIM SMALL 250 WH	0.2	LASBEZW	96666121
LARA BEZEL TRIM SMALL 250 BLK	0.2	LASBEZB	96666123
LARA BEZEL TRIM SMALL 250 SIL	0.2	LASBEZS	96630074
LARA BEZEL TRIM LARGE 300 WH	0.2	LALBEZW	96666122
LARA BEZEL TRIM LARGE 300 BLK	0.2	LALBEZB	96666124
LARA BEZEL TRIM LARGE 300 SIL	0.2	LALBEZS	96630073
LARA BEZEL TRIM X-LARGE 330 WH	0.3	LAXLBEZW	96630071
LARA BEZEL TRIM X-LARGE 330 SIL	0.3	LAXLBEZS	96630072
LARA EYELID TRIM SMALL 250 BLK	0.2	LASEYEB	96666125
LARA EYELID TRIM LARGE 300 BLK	0.3	LALEYEB	96666126
LARA EYELID GRILLE TRIM SMALL 250 BLK	0.2	LASEYGRIB	96666127
LARA EYELID GRILLE TRIM LARGE 300 BLK	0.3	LALEYGRIB	96666128
LARA GRILLE TRIM SMALL 250 BLK	0.2	LASGRIB	96666129
LARA GRILLE TRIM LARGE 300 BLK	0.3	LALGRIB	96666130
LARA Tamperproof Screw Kit SIL		LAVPSKIT	96628612

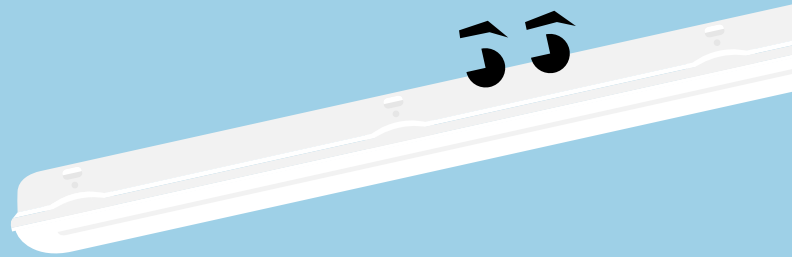
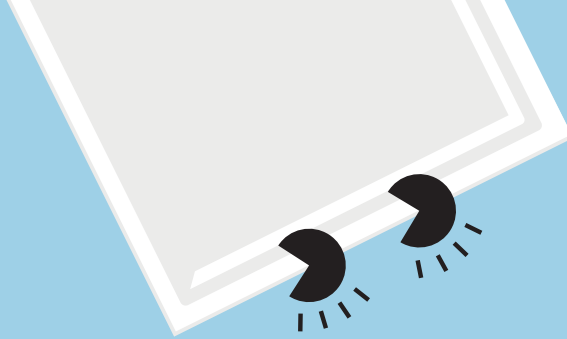
Description	Wt (kg)	Cat. No.	SAP Code
LEO LED FL IP66 75W 840 PC	4.1	LEO75W	96630252
LEO LED FL IP66 100W 840 PC	4.2	LEO100W	96630253
LEO LED FL IP66 150W 840 PC	7.1	LEO150W	96630254
LEO LED FL IP66 200W 840 PC	7.1	LEO200W	96630255



Description	Wt (kg)	Cat. No.	SAP Code
MIKE LED 600 900 830	0.17	MI900Z3K2F	96644485
MIKE LED 600 900 840	0.17	MI900Z4K2F	96644486
MIKE LED 1200 1800 830	0.29	MI1800Z3K4F	96644483
MIKE LED 1200 1800 840	0.29	MI1800Z4K4F	96644484
Spare part			
MIKE Spare Mount Kit		MIACCKIT	96628411



Description	Wt (kg)	Cat. No.	SAP Code
ZOE LED DL 110 600 840	0.25	ZO600Z4K	96666088
ZOE LED DL 160 900 840	0.40	ZO900Z4K	96666089
ZOE LED DL 210 1500 840	0.55	ZO1500Z4K	96666090
ZOE LED DL 210 2000 840	0.55	ZO2000Z4K	96666091
ZOE LED DL 110 600 830	0.25	ZO600Z3K	96666092
ZOE LED DL 160 900 830	0.40	ZO900Z3K	96666093
ZOE LED DL 210 1500 830	0.55	ZO1500Z3K	96666094
ZOE LED DL 210 2000 830	0.55	ZO2000Z3K	96666095
Lighting Control			
SWITCHLITE SLDM		SLMW30W	96019208
SWITCHLITE MRE SLDM ADJ			96239855
SWITCHLITE CC PROGRAMMER			96240295
Accessories			
Just Emergency PLUG&PLAY E3 Kit		ECO3KIT	96628839
Just Emergency PLUG&PLAY Self Test E3 Kit		ECO3TKIT	96628840



This catalogue was supplied to you by:



thorneco



THORNecoLED



THORNeco

Contact us

UK: 0844 855 4810 | IRE: +353 (0) 1 4922877
trade@zumtobelgroup.com

thorneco.com



THORNeco is constantly developing and improving its products. All descriptions, illustrations, drawings and specifications in this publication present only general particulars and shall not form part of any contract. The right is reserved to change specifications without prior notification or public announcement. All goods supplied by the company are supplied subject to the company's General Conditions of Sale, a copy of which is available on request. All measurements are in millimetres and weights in kilograms unless otherwise stated.

SAP: 96644323 Publication Date: 11/2018