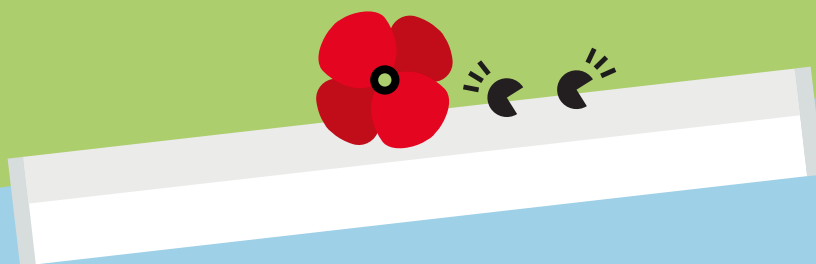


Poppy

LED Batten



Meet Poppy

Calm and composed, Poppy blends into a wide range of indoor settings

- An easy to install, versatile IP20 batten
- Direct replacement for conventional battens in terms of light performance and length
- Reliable integrated LED technology, ensuring maintenance-free installation and a long lifetime
- Homogeneous illumination
- Quick opening and installation thanks to the press release buttons
- Piano-key terminals, enabling loop-in loop-out
- Suspended LED tray for easy installation



106lm/W



IK08 rated
impact
resistance



50 000 hours
lifetime



Save up
to 60 %
compared to
T8 fluorescent

Ideal for...



Corridors



Workshops



Warehouses

Light source information

- 4000K, 2500lm(24W), 4500(40W), 5000lm(48W), 6500lm(60W), 8500lm(80W), 106lm/W
- Lifetime 50 000 hours (L70, Ta 25°C)
- Colour temperature 4000 K
- CRI 80
- McAdams (initial): 5 step

L

POPPY LED 600 2500 840	560
POPPY LED 1200 2500 840	1160
POPPY LED 1200 5000 840	1160
POPPY LED 1500 4500 840	1460
POPPY LED 1500 6500 840	1460
POPPY LED 1800 6500 840	1722
POPPY LED 1800 8500 840	1722

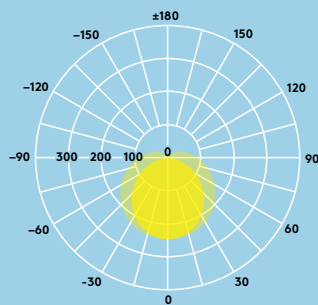


Lighting distribution

Poppy 4500lm

cd/klm ULOR: 14% DLOR: 86% LOR: 100%

106lm/W



Ordering guide

Description	Wt (kg)	Cat. No.
POPPY LED 600 2500 840	1.4	PO2500Z2F
POPPY LED 1200 2500 840	2.0	PO2500Z4F
POPPY LED 1200 5000 840	2.0	PO5000Z4F
POPPY LED 1500 4500 840	3.6	PO4500Z5F
POPPY LED 1500 6500 840	3.6	PO6500Z5F
POPPY LED 1800 6500 840	4.3	PO6500Z6F
POPPY LED 1800 8500 840	4.3	PO8500Z6F
POPPY LED 1200 2500 840 E3	2.5	PO2500ZE4F
POPPY LED 1200 5000 840 E3	2.5	PO5000ZE4F
POPPY LED 1500 4500 840 E3	4.3	PO4500ZE5F
POPPY LED 1500 6500 840 E3	4.3	PO6500ZE5F
POPPY LED 1800 6500 840 E3	5.0	PO6500ZE6F
POPPY LED 1800 8500 840 E3	5.0	PO8500ZE6F
Accessoires		
POPPY LED Suspension Kit		POSUSKIT

Installation/Mounting

- Suitable for surface mounting and suspended installation
- Rear and side entry possible
- BESA fixing points

Material/Finish

Body: sheet metal, white finish (RAL 9002)
 Diffuser: polycarbonate, opal
 End caps: polycarbonate, white (RAL 9002)

Specification

- Class I electrical
- IP20
- IK08
- ENEC certified driver

Replacement

Product	Wattage/Output	Replaces
POPPY LED 600 2500 840	24W LED, 2500 lm	2x18W T8
POPPY LED 1200 2500 840	24W LED, 2500 lm	1x36W T8
POPPY LED 1200 5000 840	48W LED 5000 lm	2x36W T8
POPPY LED 1500 4500 840	40W LED 4500 lm	1x58W T8
POPPY LED 1500 6500 840	60W LED 6500 lm	2x58W T8
POPPY LED 1800 6500 840	60W LED 6500 lm	1x70W T8
POPPY LED 1800 8500 840	80W LED 8500 lm	2x70W T8

