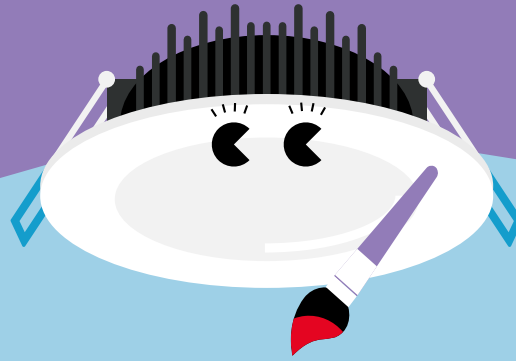


# Chloe

## LED Downlight

Coming soon



### Meet Chloe

Versatile and durable,  
Chloe blends in a wide  
range of applications

- A slim ceiling recessed Tri-Colour LED downlight with switchable light colour: choose between warm white (3000 K), cool white (4200 K) and daylight (5700 K) to suit application use
- Beam angle 95°
- High colour rendering and uniform light surface with no shadowing
- External electronic: dimmable LED driver suitable with trailing edge and universal dimmers\*
- Thermally optimised aluminium body
- Interchangeable trim rings available separately

\*see installation instructions for compatible dimmer list



790-930  
lumens, up  
to 93lm/W



30 000 hours  
lifetime



Switchable  
light colour



IP44  
(from below)  
IP20  
(from above)



Replacement  
for 1 x 18 W CFL



Dimmable

### Ideal for...



Corridors



Reception areas



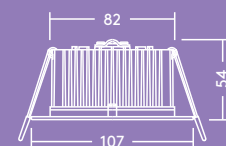
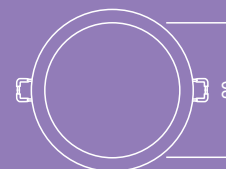
Offices and meeting rooms



Schools and universities

### Light source information


- Lifetime 30 000 hours (L70, Ta 25 °C)
- 3000 K: 790 lm (10 W), 79 lm/W
- 4200 K: 930 lm (10 W), 93 lm/W
- 5700 K: 850 lm (10 W), 85 lm/W
- CRI 80

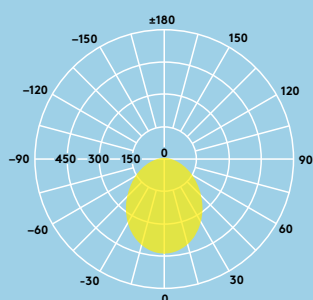


## Lighting distribution

Chloe 850 lm

cd/klm ULOR: 0 % DLOR: 100 % LOR: 100 %

85 lm/W  



## Ordering guide

Description	Wt (kg)	SAP Code
CHLOE TC LED 90 800 830/42/57 DIM WH FP	0.55	96631233
CHLOE TC TRIM WH FLAT	0.03	96631234
CHLOE TC TRIM SR REBATED	0.05	96631235
CHLOE TC TRIM SR FLAT	0.03	96631236
CHLOE TC TRIM BK REBATED	0.05	96631237
CHLOE TC TRIM BK FLAT	0.03	96631238
CHLOE LED 90 700 830 DIM WH FP*	0.50	96629760
CHLOE LED 90 800 840 DIM WH FP*	0.50	96629759

\* fix colour temperature, with a flat white trim (not interchangeable)  
TC = tricolour

### Installation/Mounting

- Chloe LED can be installed into a wide range of ceiling types of 2-20 mm thickness

### Material/Finish

Body: Aluminium  
Trim: Metal, white

### Specification

- Class II electrical
- IP44 (from below), IP20 (from above)
- IK02
- Insulation Coverable Luminaire and Driver (IC-4/IC-F)



96631238



96631234



96631236



96631237



included with the product



96631235

