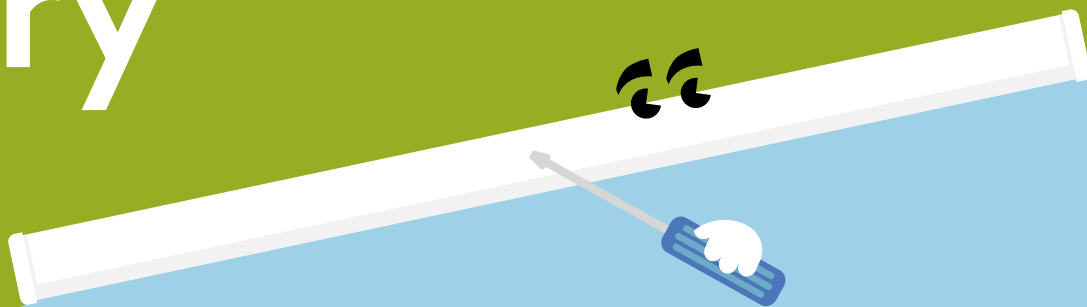


# Barry

## LED Batten



### Meet Barry

Calm and composed, Barry blends perfectly into a range of indoor settings

- Direct replacement for conventional battens in terms of light performance and length
- Reliable integrated LED technology, ensuring maintenance-free installation and a long lifetime
- Homogeneous illumination
- High efficacy of 100lm/W
- Choose between cool white (4000K) and daylight (6500K) to suit application use



2400, 4000 and 6000 lumens, 100lm/W



50 000 hours lifetime



2 h emergency version available



600 mm (2400lm), 1200 mm (4000lm) and 1500 mm (6000lm)



Save up to 60% energy compared with fluorescent battens

Ideal for...



Corridors



Warehouses



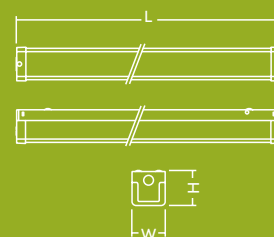
Workshops

### Light source information

- 2400lm (24W), 4000lm (40W) and 6000lm (60W), 100lm/W
- 4000K cool white LED or 6500K daylight LED
- 50 000 hour rated life (@L80B50, Ta 25°C)
- CRI 80
- Beam angle: 120°
- MacAdam (initial): 5 step



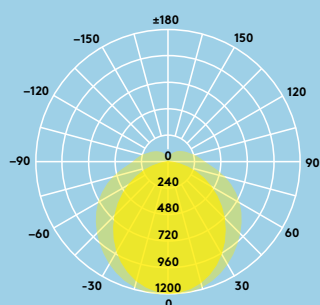
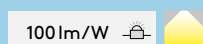
	L	W	H
BARRY LED 600 2400 840	600	66	69
BARRY LED 1200 4000 840	1200	66	69
BARRY LED 1500 6000 840	1500	66	69



## Lighting distribution

### Barry 4000lm

cd/klm ULOR: 14% DLOR: 86% LOR: 100%



## Ordering guide

Description	Wt (kg)	SAP Code
BARRY LED 600 2400 840	0.8	96631215
BARRY LED 1200 4000 840	1.6	96630490
BARRY LED 1500 6000 840	2.0	96630491
BARRY LED 1200 4000 865	1.6	96631439
BARRY LED 1500 6000 865	2.0	96631440
<b>Emergency versions</b>		
BARRY LED 600 2400 840 EL2*	1.0	96631216
BARRY LED 1200 4000 840 EL2*	2.0	96630492
BARRY LED 1500 6000 840 EL2*	2.0	96630493
BARRY LED 1500 6000 865 EL2*	2.0	96631441

\*AS 2293 Emergency Classification  
 Barry 600mm: C0 = D50, C90 = C80  
 Barry 1200/1500mm: C0= D80, C90 = D32  
 2 hour maintained LED emergency luminaire

### Installation/Mounting

- Surface mounting (screws included)

### Material/Finish

Body: steel, powder coated, white (RAL 9003)  
 Diffuser: PC, IP40, opal white  
 End caps: PC, white

### Specification

- Class I electrical
- IP20
- IK08
- Ambient operating temperature: -20 to +40 °C  
 STD, 0 to +25 °C EL2

