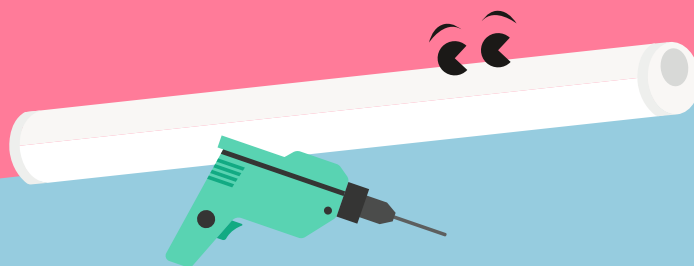


Lucy

LED Batten



Tough, resilient and efficient, Lucy is ideal for workshop areas and functional applications

- High quality, low energy lighting in wet and dusty environments with opal diffuser for uniform lighting
- 4 lumen packages from 2000lm up to 8000lm
- Through-wired: equipped with two 3-pole push-terminals (N, earth, L) as standard
- Easy, quick and tool-free installation thanks to the twist & lock mechanism in the end caps, which allowing access to the push terminals
- Flexible installation as mounting brackets can be positioned freely on the luminaire



IP66:
Dust tight and water resistant



IK08 rated impact resistance



50 000 h lifetime before luminous flux is reduced to 80% of the initial value



600, 1200, 1500 and 1800 mm



Through-wired



Tool-free installation

Ideal for ...



Car parks



Workshops



Underpasses



Storage facilities

Light source information

- Lifetime 50 000 hours (@L80, Ta 25°C)
- 2000lm, 4000lm, 6000lm, 8000lm
- Efficiency (4000K) >120lm/W
- Colour temperature 3000K & 4000K
- CRI 80
- MacAdam (initial): 4 step

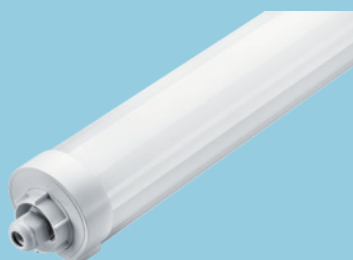
Specification

- Class I electrical
- IP66
- IK08
- Ambient operating temperature: -20 to +40°C



Facilitating life

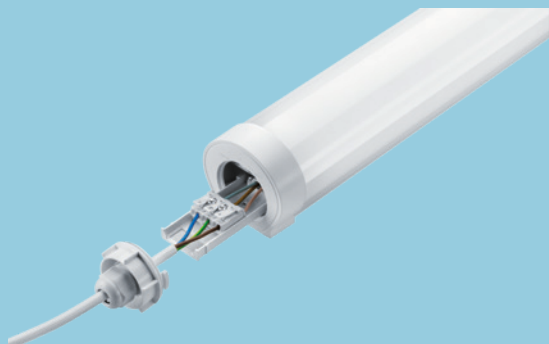
The twist & lock mechanism in the end caps ...



... allows access to the push terminals ...



... for an easy, quick and tool-free installation



Ordering guide

Description	SAP Code
LUCY 600 LED IP66 2000 840 TW	96630331
LUCY 1200 LED IP66 4000 830 TW	96635093
LUCY 1200 LED IP66 4000 840 TW	96630332
LUCY 1500 LED IP66 6000 830 TW	96635094
LUCY 1500 LED IP66 6000 840 TW	96630333
LUCY 1800 LED IP66 8000 840 TW	96630334
LUCY LED Suspension Kit	96631301

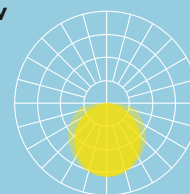
Installation/Mounting

- Suitable for surface mounting with surface mount brackets (included)
- Suitable for Suspension (Optional Kit)
- Mounting brackets can flexibly slide along the full length of the product

Material/Finish

Body: White, polycarbonate
Diffuser: Opal, polycarbonate

Portfolio overview



4000K: 0.6m-1.8m

3000K: 1.2m & 1.5m

