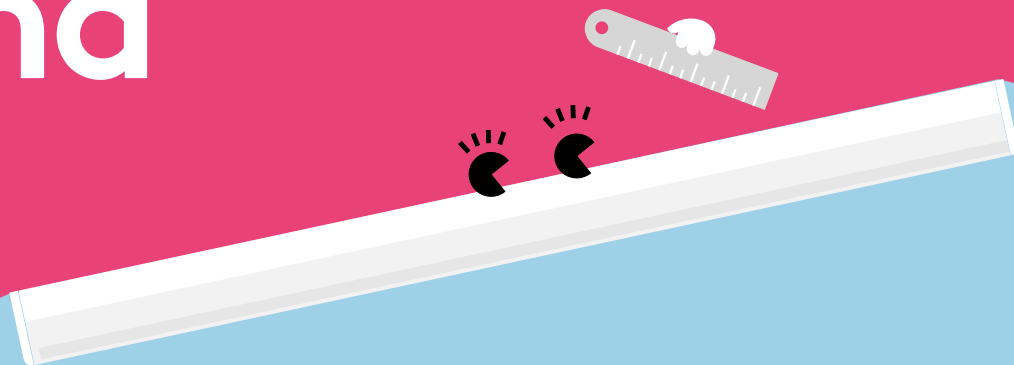


Emma

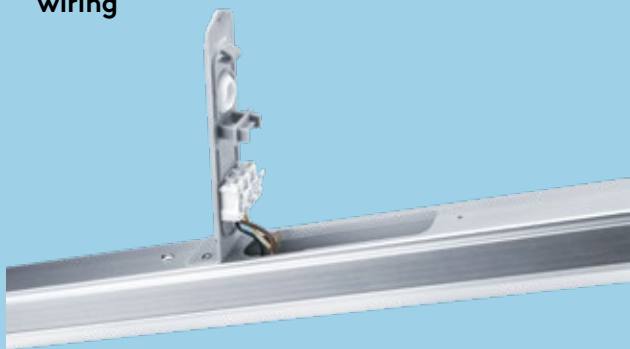
LED Batten



Meet Emma

Sleek and sophisticated,
Emma's effortless style
fits right in

- Direct replacement for conventional battens in terms of light performance and length
- Reliable integrated LED technology, ensuring maintenance-free installation and a long lifetime
- Fully homogeneous illumination
- Elegant design: lightweight brushed aluminum profile
- High efficacy of up to 120 lm/W – exceeding building regulation requirements
- Flexible mounting brackets for any fixing hole distance
- Easy and tool-free installation thanks to an entry hatch on the back of the luminaire, which allows access to the push-terminal for wiring



THORN
eco



2000, 4000
and 6000
lumens, up to
120 lm/W



50 000 hours
lifetime



Save up to
50 % energy
compared with
fluorescent
battens



600 mm
1200 mm
and 1500 mm



IK08 rated
impact
resistance



3000 K warm
white or
4000 K neutral
white

Ideal for...



Breakout areas



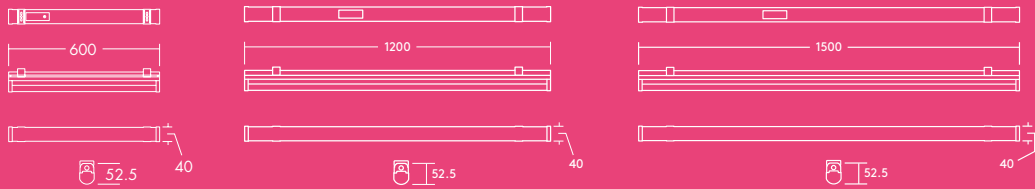
Circulation
Corridors



Cove lighting

Light source information


- 2000 lm (25 W), 4000 lm (35 W) and 6000 lm (50 W), up to 120 lm/W
- Color temperature 3000 K and 4000 K
- 50 000 hour rated life (@L70, Ta 25 °C)
- CRI 80
- MacAdam (initial): 5 step

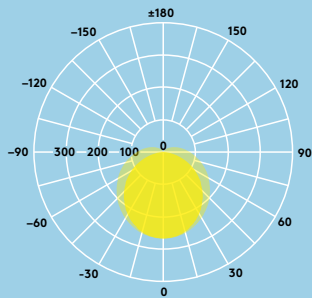


Lighting distribution

Emma 4000lm

cd/klm ULOR: 11% DLOR: 89% LOR: 100%

114lm/W 



Ordering guide

Description	Wt (kg)	SAP Code
EMMA LED 1200 4000 840	1.75	96666098
EMMA LED 1500 6000 840	2.05	96666099
EMMA LED 1200 4000 830	1.75	96629750
EMMA LED 1500 6000 830	2.05	96629751
EMMA LED 600 2000 840	1.36	96666100
EMMA LED 600 2000 830	1.36	96630322
Accessories		
EMMA LED SUSPENSION KIT	0.23	96628615

830 – 3000 K, 840 – 4000K

Installation/Mounting

- Surface mounting with surface mount brackets (included)
- Suspended mounting with suspension kit (optional)

Material/Finish

Body: Aluminum
 Diffuser: PC, opal white
 End caps: PC, white (RAL 9016)
 Ceiling clips: Stainless steel

Specification

- Class I electrical
- IP20
- IK08
- Ambient operating temperature: -10 to +40°C

