

Just Emergency



Accessory

PLUG&PLAY E3 Kit

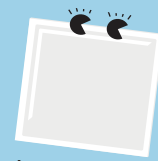
It has never been quicker and easier to convert a luminaire for emergency operation!

- The Kit has been designed to enable conversion of general lighting for emergency operation.
- The Just Emergency consisting of an Emergency LED driver, a NiMH battery for 3 h emergency duration and an indicator LED.
- Quick and easy to install Plug & Play solution, which eliminates complexity from emergency lighting

Compatible with:



Zoe



Anna

The battery

The NiMH battery incorporates SmartCharge™ technology consisting of an intermittent charge duty cycle when in charge maintenance mode. This provides energy efficient charging, reduced operating temperatures and optimum service life of the battery. Manufactured by Mackwell in UK.

Battery specifications:

- SmartCharge™ technology for NiMH batteries
- 3-hour rated emergency duration
- deep-discharge protection
- charge current NiMH (4Ah): 200 mA
- Initial charge period: 24 h

General product information:

- Power: 4W
- Rated supply voltage : 230 V
- Supply current (Max) : 25 mA
- Supply frequency : 50/60 Hz
- Power factor : 0.5–0.7
- LED voltage (Vf) : 6 to 55 V
- Ambient temperature (ta) : 0°C to +35°C
- Maximum case temperature (tc) : +70°C
- Weight : 420 g

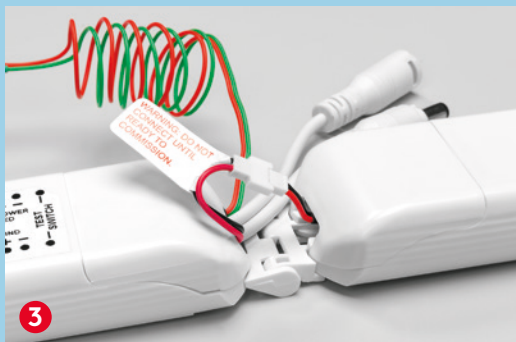
Description	Wt (kg)	SAP Code
Just Emergency PLUG&PLAY E3 Kit	0.36	96628839



Unplug the connector between the Zoe slim downlight and the driver.



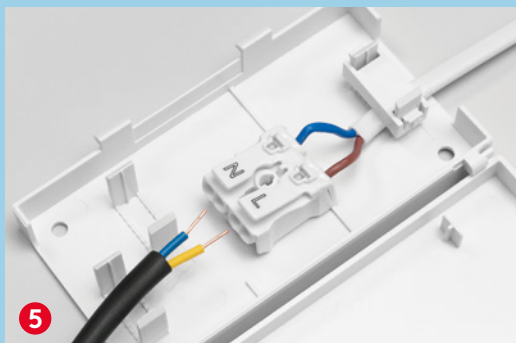
Just Emergency PLUG&PLAY E3 Kit consists of an emergency LED driver, a battery and an indicator LED.



Connect the emergency LED driver to the battery.



Plug the emergency kit in-between the Zoe LED driver and the luminaire.



Take the cable, which is already connected to the emergency kit and plug it into the Zoe connector box (yellow cable: switched line out to L (phase conductor); blue cable: N to N (neutral conductor)).



Connect the mains cable to the emergency LED driver (neutral conductor and unswitched line) and fix the cables with the strain relief.



You're almost done - only one more step to consider!



Install the indicator LED in the ceiling next to the luminaire.