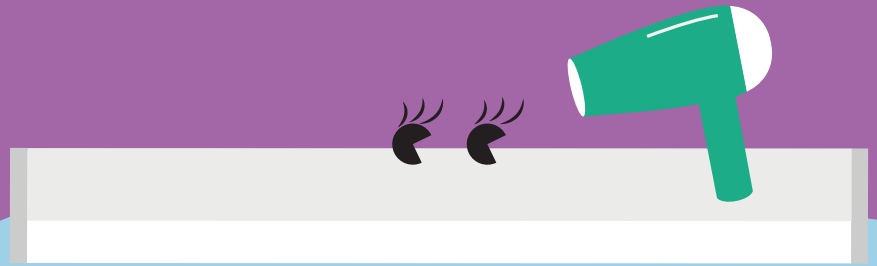


# Elsa

## LED Bathroom Mirror Luminaire



### Meet Elsa

Splash resistant, practical and attractive at the same time, Elsa takes care of your looks

- Bathroom mirror luminaire with an elegant and timeless design
- Opal diffuser ensuring visual comfort and a fully homogeneous illumination
- Integrated on/off switch
- Tool-free wiring for quick installation
- 2 lengths: 600 mm with 1200 lm and 450 mm with 800 lm
- Presence sensor options available



800 lm and 1200 lm, 100 lm/W



IP44: splash resistant



3000 K warm white or 4000 K neutral white



IK06 rated impact resistance



Presence sensor optional



50 000 hours lifetime

#### Ideal for...



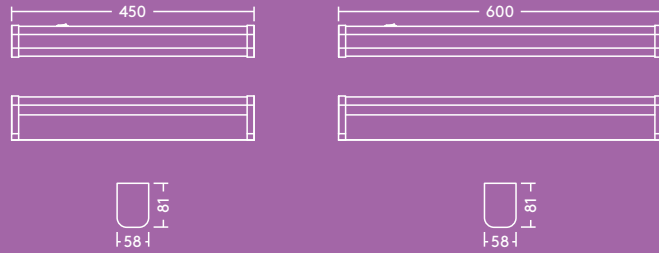
Sanitary rooms

#### Specification

- ENEC certified driver
- Class II electrical
- IP44
- IK06

#### Light source information

- 800 lm (8 W) & 1200 lm (12 W); 100 lm/W
- Color temperatures: 3000 K and 4000 K
- Life time 50 000 hours (@L70, Ta 25 °C)
- CRI ≥ 80
- MacAdam (initial): 6 step

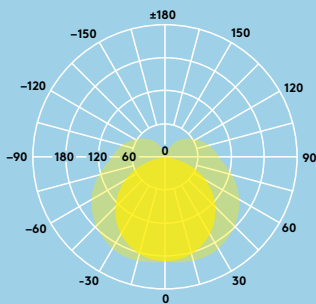


## Lighting distribution

### Elsa 800 lm

cd/klm ULOR: 0 % DLOR: 78 % LOR: 22 %

100 lm/W



## Ordering guide

Description	Wt (kg)	SAP Code
ELSA LED 600 1200 840 WH	0.8	96630327
ELSA LED 600 1200 830 WH	0.8	96630328
ELSA LED 600 1200 840 MWS WH	0.8	96630329
ELSA LED 600 1200 830 MWS WH	0.8	96630330
ELSA LED 450 800 840 WH	0.6	96630376
ELSA LED 450 800 830 WH	0.6	96630377
ELSA LED 450 800 840 MWS WH	0.6	96630378
ELSA LED 450 800 830 MWS WH	0.6	96630379

830–3000K, 840–4000K

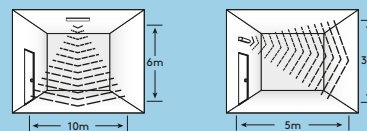
### Installation/Mounting

- Suitable for surface mounting
- Tool-free wiring with push terminal
- Sufficient space at the back of the batten for excess cable

### Material/Finish

Body: Aluminum, white finish (RAL 9016)  
 Diffuser: PC, opal  
 End cap: PC, white finish (RAL 9016)

### Sensor Range



at 100% sensitivity

### Presence sensor

Elsa's microwave sensor option will ensure that light is only delivered when needed. This sensor is a motion switch, which turns on the light on detection of movement, and turns off after a pre-selected hold-time when there are no people around. A daylight sensor is also built-in to prevent the light switching on when there is sufficient natural light (above 25 lux).

### Controllability

Sensitivity	25 % (2 m), 50 % (5 m), 75 % (8 m), 100 % (10 m)
Time	10 s, 1 min, 5 min, 10 min, 15 min, 20 min, 25 min, 30 min
lux	10 lux, 20 lux, 50 lux, 100 lux, 300 lux, 500 lux, disable



Five year guarantee