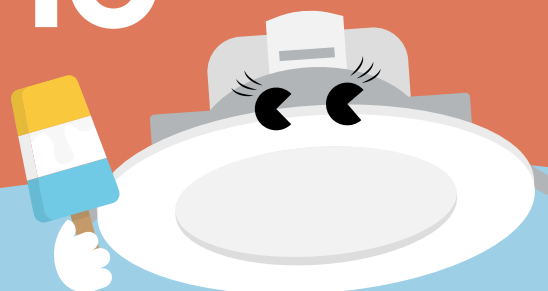


Sharon Vario

LED Downlight



Reliable and adaptable,
Sharon Vario is perfectly
suited to everyday needs

- A compact recessed LED downlight with switchable light colour: choose between warm white (3000K), cool white (4200K) and daylight (5700K) to suit application use
- Beam angle 95°
- High colour rendering and uniform light surface with no shadowing
- Integrated electronic dimmable LED driver suitable with trailing edge and universal dimmers*
- Two sizes available: 8 W with 90 - 95 mm cut-out and 16 W with 160 - 170 mm cut-out

*see installation instructions for compatible dimmer list



Switchable
light colour



700-1691
lumens, up
to 105 lm/W



IP54
(from below)
IP40
(from above)



40 000 hours
lifetime



Dimmable



Replacement
for 1×18 W CFL
and 2×18 W CLF

Ideal for...



Corridors



Reception
areas



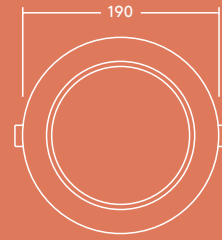
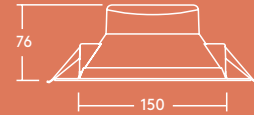
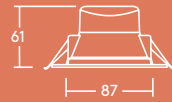
Offices and
meeting rooms



Schools and
universities



IC-4



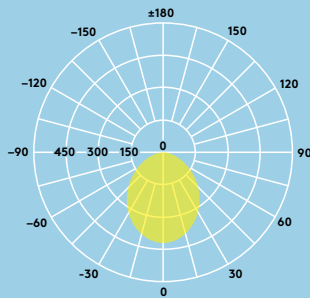
Lighting distribution

100lm/W



**Sharon Vario 800lm
4000K**

cd/klm ULOR: 0 %
DLOR: 100 %
LOR: 100 %

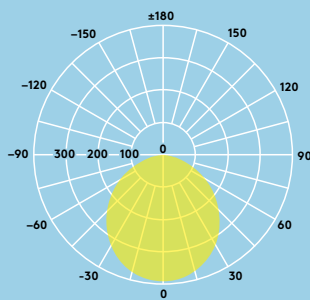


100lm/W



**Sharon Vario 1600lm
4000K**

cd/klm ULOR: 0 %
DLOR: 100 %
LOR: 100 %



Ordering guide

Description	Wt (kg)	SAP Code
SHARON VAR LED 90 800 830/40/57 DIM FP	0.25	96649647
SHARON VAR LED 160 1600 830/40/57 DIM FP	0.50	96649648

Light source information

- Lifetime 40 000 hours (L70, Ta 25°C)
- 3000K: 700lm (8W) and 1485lm (16W)
- 4000K: 800lm (8W) and 1691lm (16W)
- 5700K: 735lm (8W) and 1530lm (16W)
- CRI 80

Specification

- Class II electrical
- IP54 (from below), IP40 (from above)
- IK02
- Insulation Coverable Luminaire (IC-4)

Installation/Mounting

- Sharon Vario LED can be installed into a wide range of ceiling types of 2-20mm thickness

Material/Finish

Body and trim: Polymer, white

