



# THORN



Economical LED lighting

02/2018



member of zumtobel group

# Meet the family

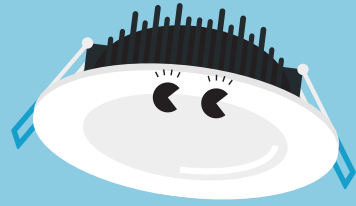
**Introducing our range of best in class, economical LED luminaires. They're the ideal like-for-like replacements for all lighting sources – from circulation and meeting areas, to storage facilities and car parks. Simple to install, longer lasting and energy saving, you'll be friends in no time.**



**Five year warranty**



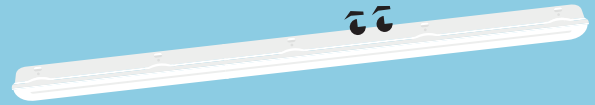
**Barry**  
LED batten



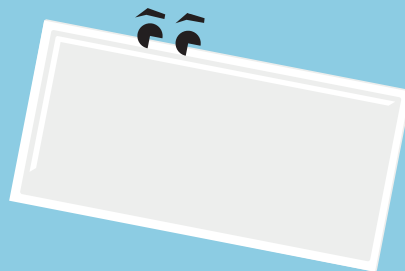
**Chloe**  
LED downlight



**George**  
LED high bay



**Julie**  
IP65 LED luminaire



**Ruby**  
Recessed LED panel

# Barry

## LED batten



### Meet Barry

Calm and composed, Barry blends perfectly into a range of indoor settings

- Direct replacement for conventional battens in terms of light performance and length
- Reliable integrated LED technology, ensuring maintenance-free installation and a long lifetime
- Homogeneous illumination
- High efficacy of 100 lm/W



4000 and 6000 lumens, 100 lm/W



50 000 hours lifetime



1200 mm (4000 lm) and 1500 mm (6000 lm)



Save up to 60% energy compared with fluorescent battens

### Ideal for...



Corridors



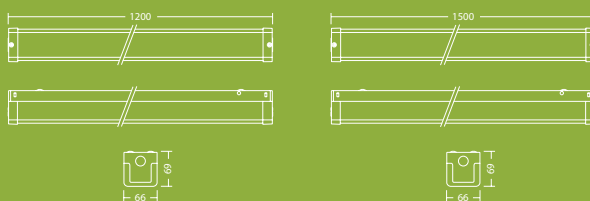
Warehouses



Workshops

### Light source information

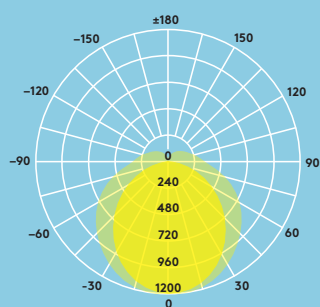
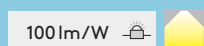
- 4000 lm (40 W) and 6000 lm (60 W), 100 lm/W
- 4000 K cool white LED
- 50 000 hour rated life (@L80B50, Ta 25 °C)
- CRI 80
- Beam angle: 120°
- McAdam (initial): 5 step



## Lighting distribution

### Barry 4000lm

cd/klm ULOR: 14% DLOR: 86% LOR: 100%



## Ordering guide

Description	Wt (kg)	SAP Code
BARRY LED 1200 4000 840	1.6	96630490
BARRY LED 1500 6000 840	2.0	96630491
BARRY LED 1200 4000 840 EL2	2.1	96630492
BARRY LED 1500 6000 840 EL2	2.5	96630493

### Installation/Mounting

- Surface mounting (screws included)

### Material/Finish

Body: Iron, powder coated, white (RAL 9003)

Diffuser: PC, IP40, opal white

End caps: PC, white

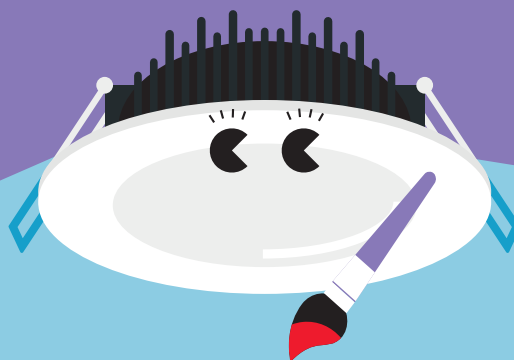
### Specification

- Class I electrical
- IP20
- IK08



# Chloe

## LED downlight



### Meet Chloe

Versatile and durable,  
Chloe blends in a wide  
range of applications

- A slim ceiling recessed LED downlight with high color rendering
- Beam angle 90°
- Consistent light output with no shadowing
- External electronic: dimmable LED driver suitable with trailing edge and universal dimmers\*
- Choice of 3000 K or 4000 K to suit application use
- Thermally optimised aluminium body
- Fitted with flex and plug

\*see installation instructions for compatible dimmer list



700-800  
lumens, up  
to 80 lm/W



30 000 hours  
lifetime



90 mm cut-out



IP44



Replacement  
for 1 x 18 W CFL

### Ideal for...



Corridors



Reception areas



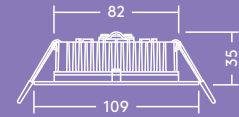
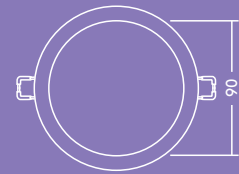
Offices and meeting rooms



Schools and universities

### Light source information

- Lifetime 30 000 hours (L70, Ta 25°C)
- 3000K: 700 lm (10 W), 70 lm/W
- 4000K: 800 lm (10 W), 80 lm/W
- CRI 80

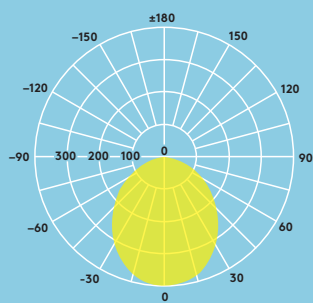


## Lighting distribution

Chloe 800lm

cd/klm ULOR: 0% DLOR: 100% LOR: 100%

80lm/W



## Ordering guide

Description	Wt (kg)	SAP Code
CHLOE LED 90 800 840 DIM WH FP	0.50	96629759
CHLOE LED 90 700 830 DIM WH FP	0.50	96629760

### Installation/Mounting

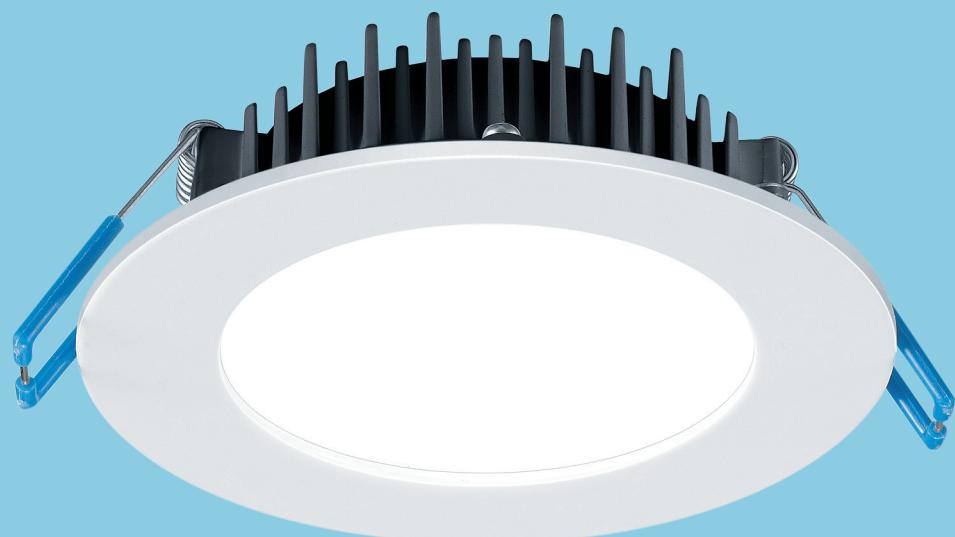
- Chloe LED can be installed into a wide range of ceiling types of 2–20 mm thickness

### Material/Finish

Body: Aluminium, matt white finish  
 Diffuser: UV stabilized acrylic

### Specification

- Class II electrical
- IP44 (from below), IP20 (from above)
- IK02



# George

## LED high bay



### Meet George

Reliable, efficient and bright, George feels comfortable in high ceilings

- George offers a simple, direct and cost-effective one-for-one replacement of traditional HID high bay luminaires
- Efficient LEDs (120 lm/W) combined with a lens technology offering a beam angle of 90° to reduce waste light
- With a long 50 000-hour lifetime, George eliminates the need for costly and disruptive lamp replacements
- The housing is carefully designed to allow air through the luminaire. This prevents the components from overheating and ensures optimum performance in industrial environments
- Supplied with 3 pin flex & plug (3m length)



12 000 –  
30 000 lumens



50 000 hours  
lifetime



IK08 rated  
impact  
resistance



90° beam  
angle



IP65: Dust  
tight and  
water  
resistant



Save up to  
50% energy  
compared  
to HID

#### Ideal for...



Retail outlets



Exhibition Halls

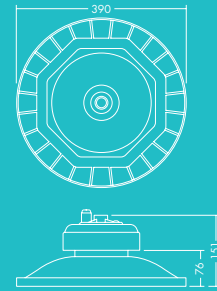
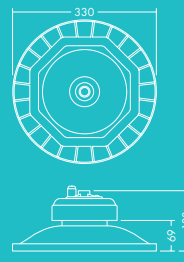


Warehouses

#### Light source information

- Lifetime 50 000 hours (@L70B50, Ta 25 °C)
- 12000lm (100 W), 18000lm (150 W), 24000lm (200 W), 30000lm (250 W), up to 120lm/W
- Colour temperature: 4000 K
- CRI 80
- McAdams (initial): 5 step



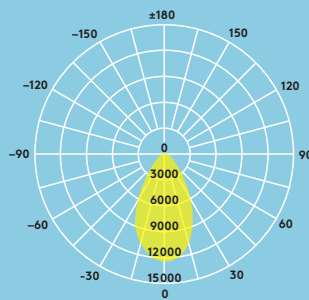


## Lighting distribution

### George 12000 lm

cd/klm ULOR: 0% DLOR: 100% LOR: 100%

120 lm/W  



## Ordering guide

Description	Wt (kg)	SAP Code
GEORGE LED 330 12000 840 <sup>1</sup>	3.40	96629086
GEORGE LED 330 18000 840 <sup>2</sup>	3.80	96629087
GEORGE LED 390 24000 840 <sup>3</sup>	6.00	96629088
GEORGE LED 390 30000 840 <sup>3</sup>	6.00	96629089
<b>Mounting brackets</b>		
SET OF GEORGE STIRRUP S (6pcs) <sup>1</sup>	0,37x6	96629371
SET OF GEORGE STIRRUP M (6pcs) <sup>2</sup>	0,37x6	96629372
SET OF GEORGE STIRRUP L (6pcs) <sup>3</sup>	0,47x6	96629373

<sup>123</sup>The small numbers indicate how to match fittings and mounting brackets.

### Installation/Mounting

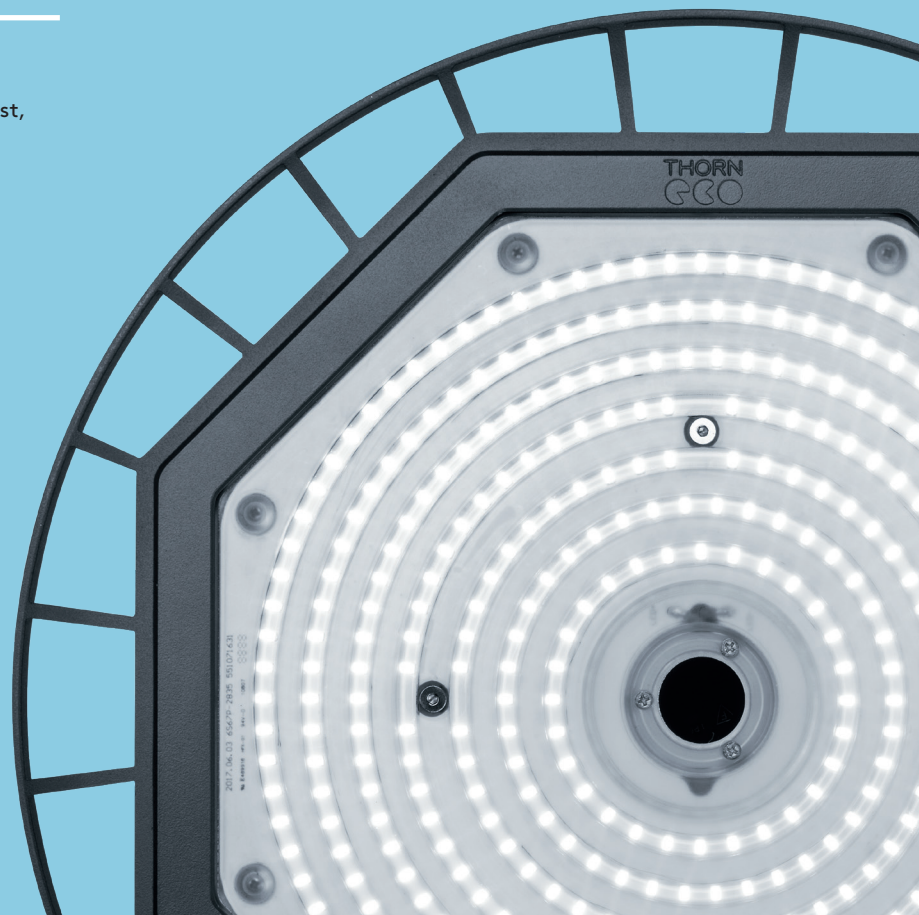
- Single point suspension (mounting hook supplied with luminaire)
- Stirrup for wall/ceiling mounting (available as accessory)

### Material/Finish

Body: Aluminum die-cast, black (RAL9017)  
 Lens: PC

### Specification

- Class I electrical
- IP65
- IK08
- Ambient operating temperature: -30 to +50°C



# Julie

## IP65 LED luminaire



### Meet Julie

With a tough exterior, Julie is the optimal choice for industrial and commercial applications

- High quality, low energy lighting in wet and dusty environments
- High quality opal diffuser for uniform lighting
- Ideal for replacement and refurbishment projects
- 4000 lm (40 W), 6000 lm (60 W), up to 100 lm/W
- Colour Temperature 4000 K



**IP65:**  
Dust tight and water resistant



Save up to 60% energy compared to T8 fluorescent



**IK08 rated**  
impact resistance



Lengths of 1232 mm and 1532 mm



2h emergency version available



50 000 hours lifetime

### Ideal for...



Car parks



Workshops



Underpasses



Storage facilities

### Installation/Mounting

Suitable for surface mounting. 4 x 10 mm stainless steel self-tapping screws (not included) can be applied to prevent unauthorised opening of the luminaire.

### Material/Finish

Canopy: Polycarbonate  
Diffuser: Opal polycarbonate  
Bracket: Stainless steel

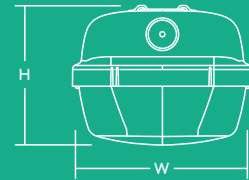
### Specification

- Class I electrical
- IP65
- IK08
- Ambient operating temperature: -20 to +40°C STD, 0 to +25°C EL2



L B H

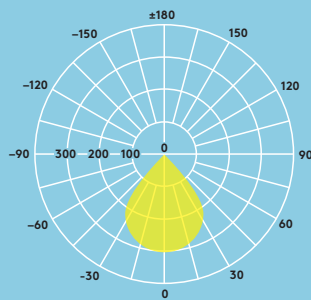
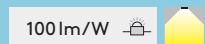
JULIE 1200 LED IP65 4000	1232	103	78
JULIE 1500 LED IP65 6000	1532	103	78



## Lighting distribution

Julie LED 6000lm

cd/klm ULOR: 8% DLOR: 92% LOR: 100%



## Ordering guide

Description	Wt (kg)	SAP Code
JULIE 1200 LED IP65 4000 840	1.50	96665577
JULIE 1200 LED IP65 4000 840 COR MWS	1.60	96630234
JULIE 1500 LED IP65 6000 840	1.95	96665580
<b>Emergency versions</b>		
JULIE 1200 LED IP65 4000 840 EL2*	1.90	96646833
<b>Spare part</b>		
JULIE LED Spare Mount Kit		96628409

\*AS 2293 Emergency Classification  
C0 = D40, C90 = D25  
2 Hour Maintained, LED Emergency Luminaire

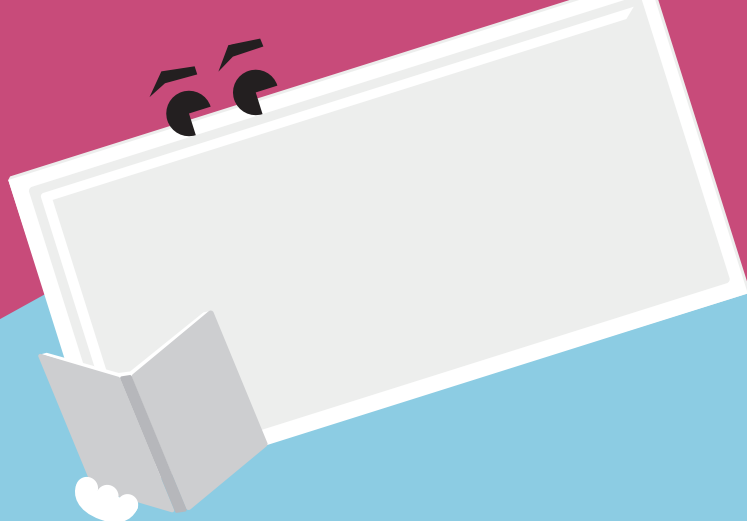
## Light source information

- Life time 50 000 hours (@L70B50, Ta 25°C)
- 4000lm (40 W), 6000lm (60 W), up to 100lm/W
- Colour temperature 4000K
- CRI80
- McAdams (initial): 4 step



# Ruby

Recessed LED panel



## Meet Ruby

Sophisticated and compact, Ruby creates a pleasant atmosphere in communication areas

- Elegant and lightweight design with a evenly lit surface
- Replaces conventional luminaires with 4 x 36W T8 and 2 x 36W T8 and offers more than 40% energy saving
- Ideal solution for any refurbishment job
- Supplied with 3 pin flex & plug (1.5m length)
- Suitable for recessed, surface and suspended mounting



3200 & 4500 lumens, up to 100lm/W



1200 x 300mm and 1200 x 600mm



50 000 hours lifetime

### Ideal for...



Offices and meeting rooms



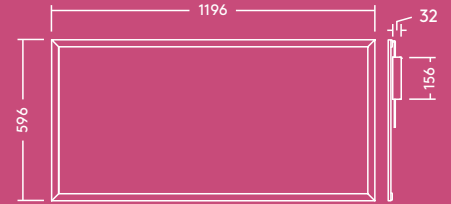
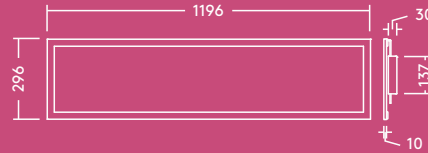
Schools and universities



Foyers and waiting-rooms

### Light source information

- 3200lm (32W), 4000K, 100 lm/W
- 4500lm (50W), 4000K, 90 lm/W
- CRI 80
- McAdam (initial): 4 step
- Beam angle: 110°

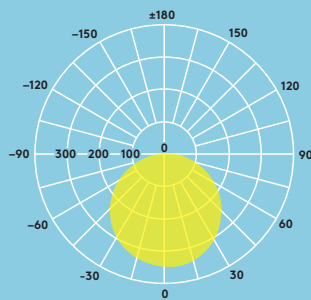


## Lighting distribution

### Ruby 3200lm

cd/klm ULOR: 0% DLOR: 100% LOR: 100%

100lm/W



## Ordering guide

Description	Wt (kg)	SAP Code
RUBY LED 1200x300 3200 840 FP	3.32	96628981
RUBY LED 1200x600 4500 840 FP	4.75	96628982
Accessories		
RUBY LED 1200 x 300 Suspension Kit		96629238
RUBY LED 1200 x 600 Suspension Kit		96629085

### Installation/Mounting

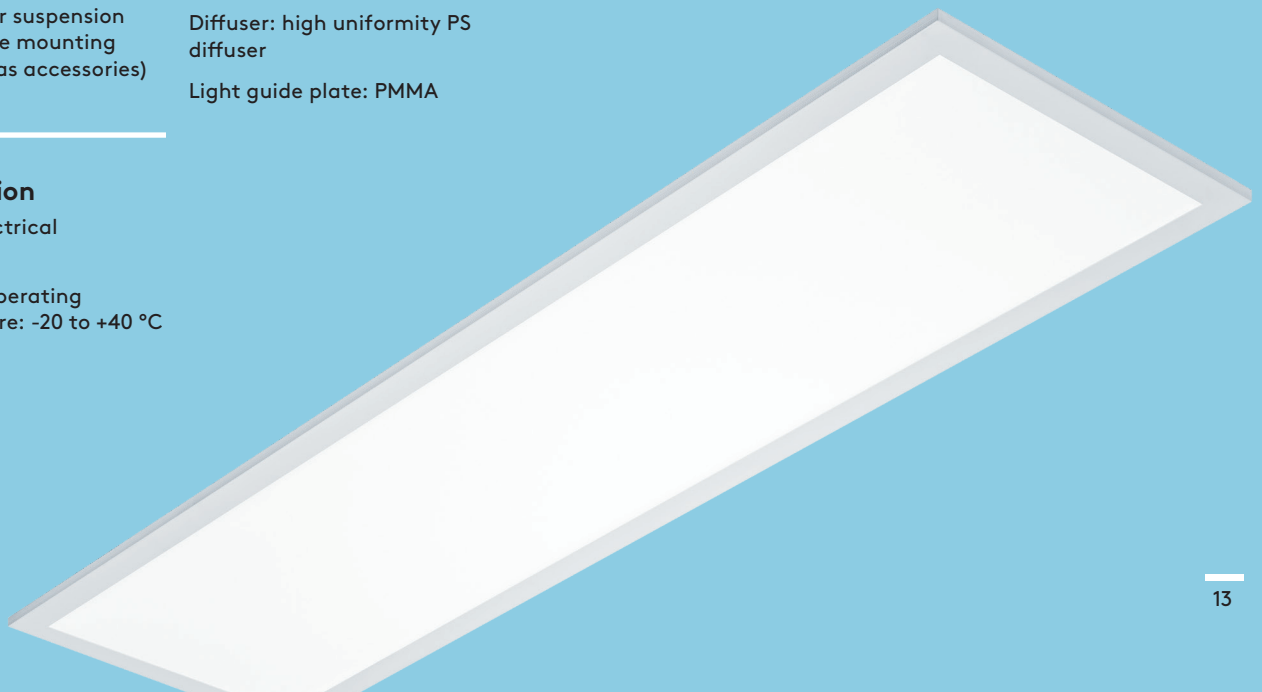
- Lay-in installation in T-bar ceiling grids
- Suitable for suspension and surface mounting (available as accessories)

### Material/Finish

Body: Aluminum, white finish (RAL 9003)  
 Diffuser: high uniformity PS diffuser  
 Light guide plate: PMMA

### Specification

- Class II electrical
- IP20
- Ambient operating temperature: -20 to +40 °C





## Contact

### Australia

NSW - Headquarters  
ZG Lighting Australia Pty Ltd  
43 Newton Road  
Wetherill Park, NSW 2164  
Australia  
T +61 1300 139 965  
E [info.au@zumtobelgroup.com](mailto:info.au@zumtobelgroup.com)

NSW - Sales office  
ZG Lighting Australia Pty Ltd  
38 Oxley Street  
Crows Nest, NSW 2065  
Australia  
T +61 1300 139 965  
E [info.au@zumtobelgroup.com](mailto:info.au@zumtobelgroup.com)

VIC  
ZG Lighting Australia Pty Ltd  
163 Epsom Road  
Flemington, VIC 3031  
Australia  
T +61 1300 139 965  
E [info.au@zumtobelgroup.com](mailto:info.au@zumtobelgroup.com)

QLD  
ZG Lighting Australia Pty Ltd  
Level 1, 349 Coronation Drive  
Milton, 4064 QLD  
Australia  
T +61 1300 139 965  
E [info.au@zumtobelgroup.com](mailto:info.au@zumtobelgroup.com)

WA  
SCOPE LIGHTING PTY. LTD.  
14 Christable Way  
Landsdale, WA 6065  
Australia  
T +61 1300 139 965  
E [info.au@zumtobelgroup.com](mailto:info.au@zumtobelgroup.com)

SA  
LEDA Lighting Solutions PTY. LTD.  
3 Prescott Court  
Hallett Cove, SA 5158  
Australia  
T +61 1300 139 965  
E [info.au@zumtobelgroup.com](mailto:info.au@zumtobelgroup.com)

TAS  
Westport Agencies PTY. LTD.  
12 Fleet Street  
Moonah, TAS 7009  
Australia  
T +61 1300 139 965  
E [info.au@zumtobelgroup.com](mailto:info.au@zumtobelgroup.com)

NT  
Global Lighting Solutions PTY. LTD.  
Cnr Mataram St & Coonawarra Rd  
Winnellie, NT 0820  
Australia  
T +61 1300 139 965  
E [info.au@zumtobelgroup.com](mailto:info.au@zumtobelgroup.com)

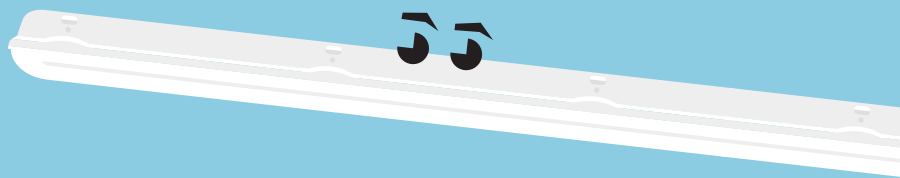
### New Zealand

AUCKLAND - Headquarters  
ZG Lighting (NZ) Limited  
27 Jomac Place,  
Avondale, Auckland 1026  
New Zealand  
T + 0800 800 834  
T +64 (9) 828 7155  
F +64 (9) 828 7591  
E [info.nz@zumtobelgroup.com](mailto:info.nz@zumtobelgroup.com)

WELLINGTON  
ZG Lighting (NZ) Limited  
Level 2, 225 Thorndon Quay,  
Pipitea, Wellington 6011  
New Zealand  
T + 0800 800 834  
T +64 04 815 8010  
F +64 04 499 6058  
E [info.nz@zumtobelgroup.com](mailto:info.nz@zumtobelgroup.com)

CHRISTCHURCH  
ZG Lighting (NZ) Limited  
Unit 7A, 303 Blenheim Rd  
Upper Riccarton, Christchurch 8041  
New Zealand  
T +64 03 366 2485  
T + 0800 800 834  
F +64 03 366 8905  
E [info.nz@zumtobelgroup.com](mailto:info.nz@zumtobelgroup.com)

[thorn-eco.com](http://thorn-eco.com)



Thorn Lighting is constantly developing and improving its products. All descriptions, illustrations, drawings and specifications in this publication present only general particulars and shall not form part of any contract. The right is reserved to change specifications without prior notification or public announcement. All goods supplied by the company are supplied subject to the company's General Conditions of Sale, a copy of which is available on request. All measurements are in millimetres and weights in kilograms unless otherwise stated.

Publication Date: 02/2018



thorneco



THORNecoLED



thorneco

