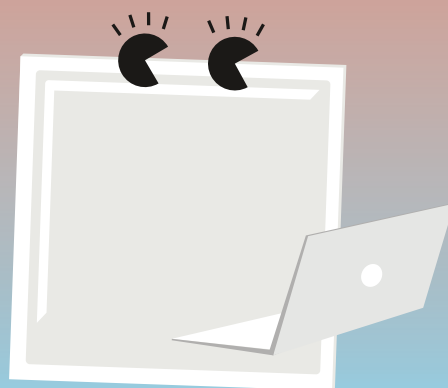


# Anna

## Recessed LED Panel



### Low glare and calm, Anna is the universal talent for desk space environments

- Gentle, soft and glare free lighting (UGR <19) with high uniformity micro-prismatic diffuser
- Back-lit LED panel with lightweight design and low installation depth
- Even surface and IP44 (from below) for hassle-free cleaning
- Supplied with remote driver, pre-wired with 2 pin FLEX&PLUG (1.2m length) for tool-free installation
- Suitable for recessed mounting in T-bar ceiling grids



4800, 3600,  
1800 lm,  
up to 109 lm/W



1196 × 596 mm  
1196 × 296 mm  
596 × 596 mm  
596 × 296 mm



UGR <19:  
gentle, soft  
and glare-  
free lighting  
for office  
applications



IP44  
(from below):  
Splash resistant  
for hassle-free  
cleaning



50 000 h life-  
time before  
luminous flux  
is reduced to  
80 % of the  
initial value



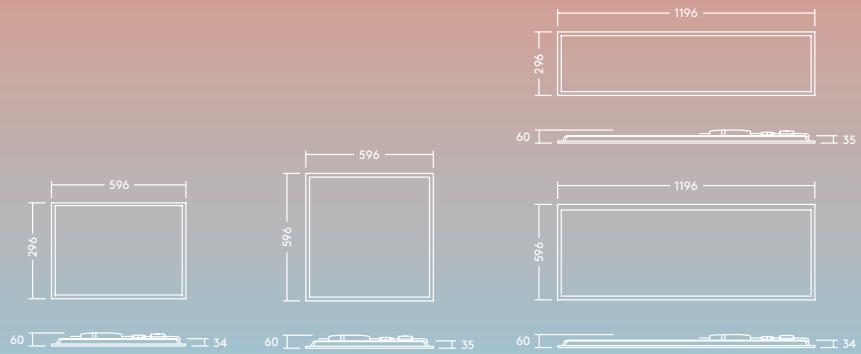
### Ideal for ...



Offices and  
meeting rooms



Schools and  
universities



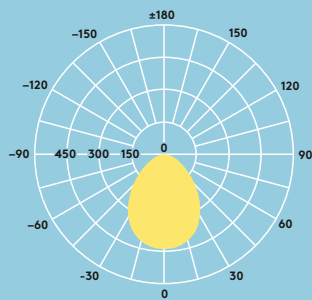
## Lighting distribution

109 lm/W



### Anna 4800 lm

cd/klm ULOR: 0 %  
DLOR: 100 %  
LOR: 100 %



## Ordering guide

Description	SAP Code
ANNA LED 1200x600 4800 840 FP	96650512
ANNA LED 1200x300 3500 840 FP	96650513
ANNA LED 600x600 3500 840 FP	96650514
ANNA LED 600x300 1800 840 FP	96650515

## Light source information

- 4000K
- 1196x596: 4800 lm/44W
- 1196x296: 3600 lm/36W
- 596x596: 3600 lm/36W
- 596x296: 1800 lm/18W
- 50 000 hours rated life (@L80, Ta 25°C)
- CRI 80
- MacAdam (initial): 4 step
- UGR < 19

## Specification

- Class II electrical
- IP44 (from below), IP20 (from above)
- IK03
- RCM certified driver
- Ambient operating temperature: -20 to +40°C

## Installation/Mounting

- Lay-in installation in T-bar ceiling grids

## Material/Finish

Frame: Aluminium, white (RAL 9003)

Diffuser: High uniformity PS micro-prismatic diffuser

Backplate: Steel sheet

