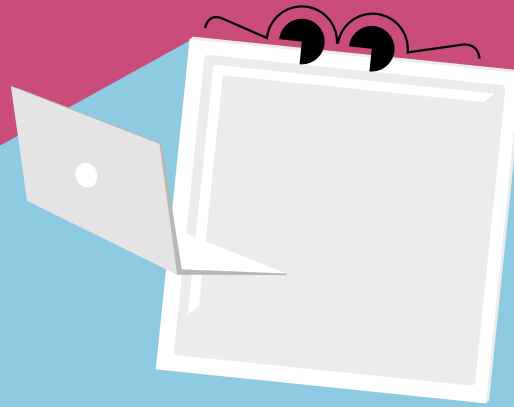


Eve

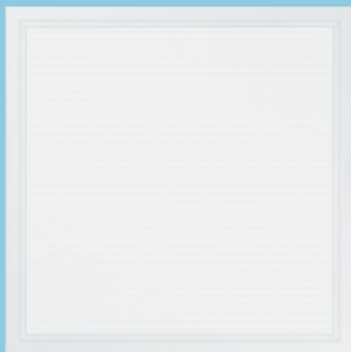
Recessed LED panel



Meet Eve

Low glare and compact, Eve creates a harmonious setting in desk space environments

- Elegant frame made out of one-piece high-quality ABS material
- Compact design with integrated driver
- Tool-free installation (piano key terminal for up to 2.5 mm² wires)
- Fully homogeneous illumination
- Easy installation thanks to an external connector box enabling loop-in loop-out wiring
- Replaces conventional luminaires with 4x18 W T8 and offers up to 60 % energy saving



3400 lumens
110 lm/W
(4000K)



Save up to
80 % energy
compared with
panels with
fluorescent
lamps



<19 UGR:
gentle, soft
and glare
lighting
for office
applications



596 x 596 mm



3h emergency
version
available



50 000 hours
lifetime

Ideal for...



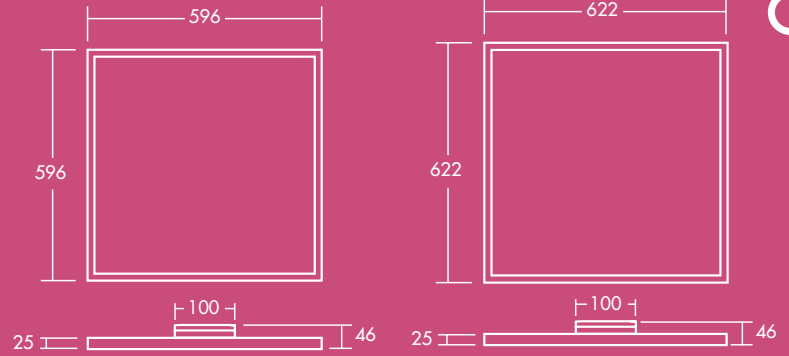
Offices and
meeting rooms



Schools and
universities

Light source information

- 4000K, 3400lm (31W), 110lm/W
- 3000K, 3200lm (31W), 103lm/W
- 50 000 hour rated life (@L70B50, Ta 25°C)
- CRI 80
- McAdam (initial): 3 step
- <19 UGR

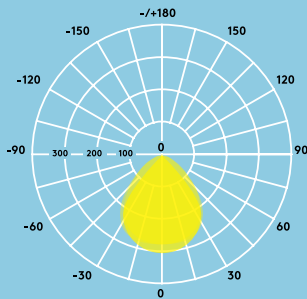


Lighting distribution

Eve 3400lm

cd/klm ULOR: 0% DLOR: 100% LOR: 100%

110lm/W



Ordering guide

Description	Wt (Kg)	SAP Code
EVE LED Q596 3400 840	3.3	96666096
EVE LED Q596 3400 830	3.3	96628837
EVE LED Q622 3400 840	3.5	96666097
EVE LED Q622 3400 830	3.5	96628838
Emergency version		
EVE LED Q596 3400 840 E3	3.9	96628611
Accessories		
EVE LED Q596 Recessed Mount Box		96628912
EVE LED Q622 Recessed Mount Box		96628913
EVE LED Q596 slim Surface Mount Box		96628854
EVE LED Q596 Surface Mount Box		96628856
EVE LED Q622 slim Surface Mount Box		96628855

Installation/Mounting

- Lay-in installation in T-bar ceiling grids
- Suitable for suspension, surface and recessed installation

Material/Finish

Frame: ABS, white (RAL 9016)

Diffuser: PS

Backplate: Aluminum

Specification

- Class II electrical
- IP40
- IK02

