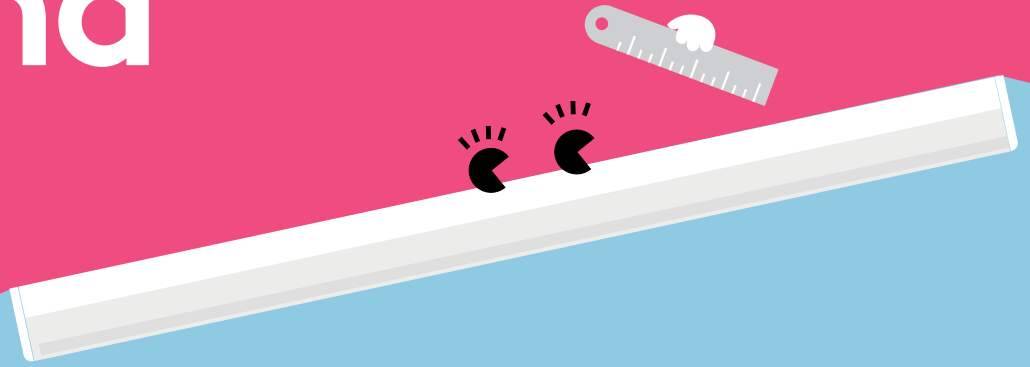


Emma

LED batten



Meet Emma

Sleek and sophisticated,
Emma's effortless style
fits right in

- Direct replacement for conventional battens in terms of light performance and length
- Reliable integrated LED technology, ensuring maintenance-free installation and a long lifetime
- Fully homogeneous illumination
- Elegant design: narrow profile and lightweight
- High efficacy of up to 120 lm/W – exceeding building regulation requirements
- Flexible mounting brackets for any fixing hole distance
- Easy installation thanks to an entry hatch on the back of the luminaire, which allows access to the terminal block for wiring



4000 and
6000 lumens,
up to
120 lm/W



50 000 hours
lifetime



Save up to
50% energy
compared with
fluorescent
battens



1500 mm
(6000 lm)
and 1200 mm
(4000 lm)



IK08 rated
impact
resistance

Ideal for...



Breakout areas



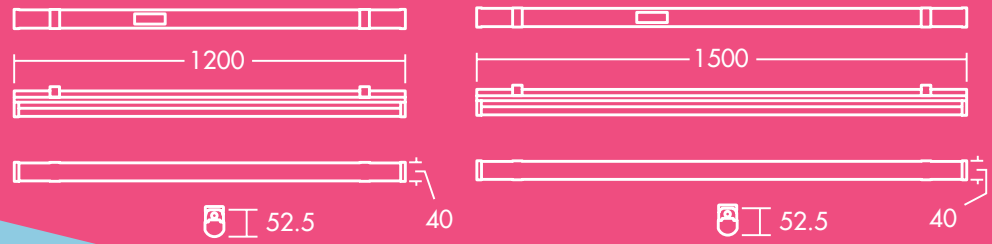
Circulation
Corridors



Cove
lighting

Light source information

- 4000lm (35W), 115lm/W and 6000lm (50W), 120lm/W
- 4000K neutral white LED
- 50 000 hour rated life (@L70B50, Ta 25°C)
- CRI 80
- McAdam (initial): 5 step

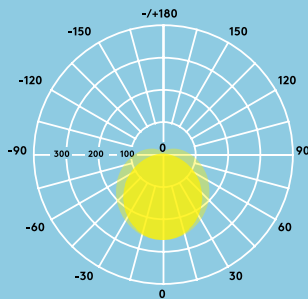


Lighting distribution

Emma 4000lm

cd/klm ULOR: 11% DLOR: 89% LOR: 100%

120lm/W



Ordering guide

Description	Wt (Kg)	SAP Code
EMMA LED 1200 4000 840	0.8	96666098
EMMA LED 1500 6000 840	1.2	96666099
Accessories		
EMMA LED SUSPENSION KIT		96628615

Installation/Mounting

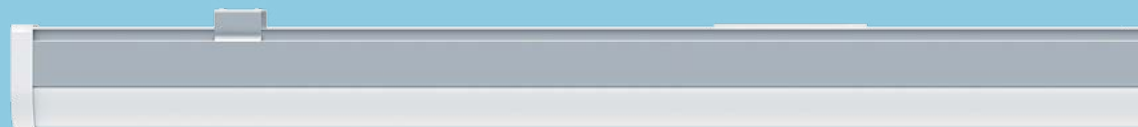
- Surface mounting with surface mount brackets (included)
- Suspended mounting with suspension kit (optional)

Material/Finish

Body: Aluminum
 Diffuser: PC, opal white
 End caps: PC, white (RAL 9016)
 Ceiling clips: Stainless steel

Specification

- Class I electrical
- IP20
- IK08



Five year warranty