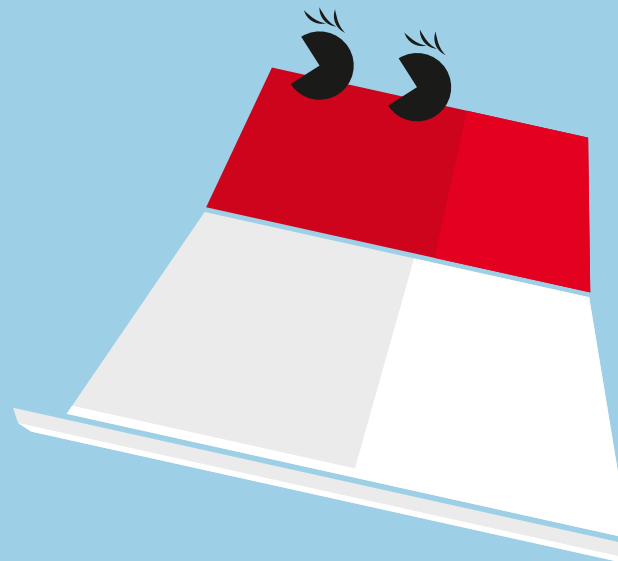
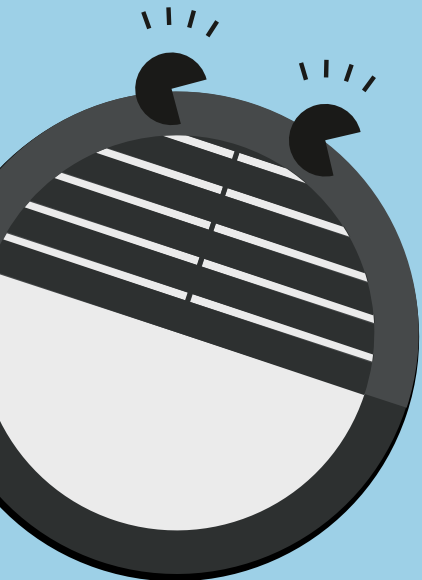


THORN



Economical LED lighting

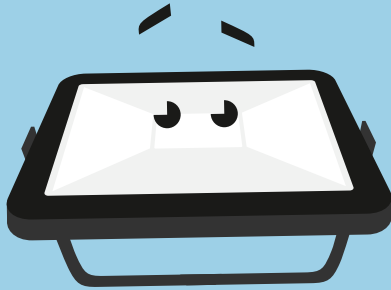




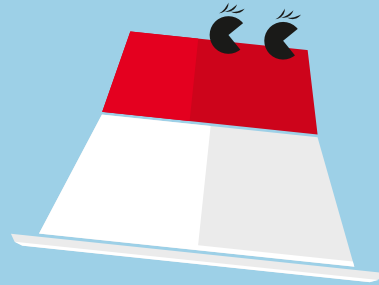
Meet the family

Introducing our range of best in class, economical LED luminaires. They're the ideal like-for-like replacements for all lighting sources – from industrial environments, to offices and outdoors. Simple to install, longer lasting and energy saving, you'll be friends in no time.

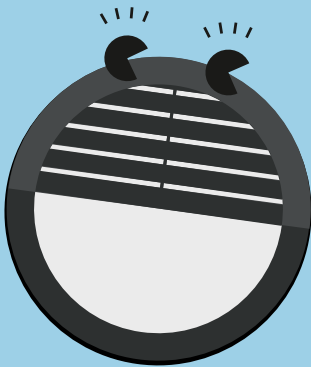




Alice
LED floodlight



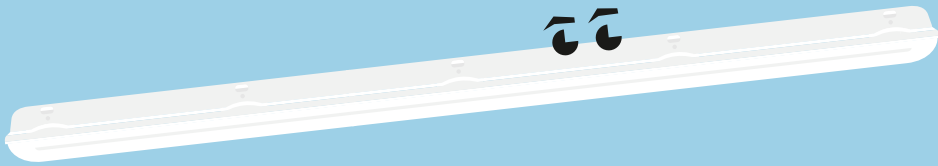
Amy
Recessed LED
downlight



Lara
Circular IP65 bulkhead



Zoe
Slim downlight



Julie
IP65 LED luminaire

Alice

LED floodlight

Meet Alice

Both strong and bright,
Alice is robust and
reliable no matter the
weather

- 5 different lumen packages from 10 W to 100 W
- Very lightweight, compact and streamline design
- Universal mounting bracket allows wall or surface mounting with the possibility of tilting upwards or downwards
- Pre-wired with mains cable



800, 1600,
2400, 4000
and 8000
lumens



Save up to
70% energy
compared
with halogen
floodlights



Sealed to IP65
for protected
exterior
applications



IK08 rated
impact
resistance

Ideal for...



Gardens



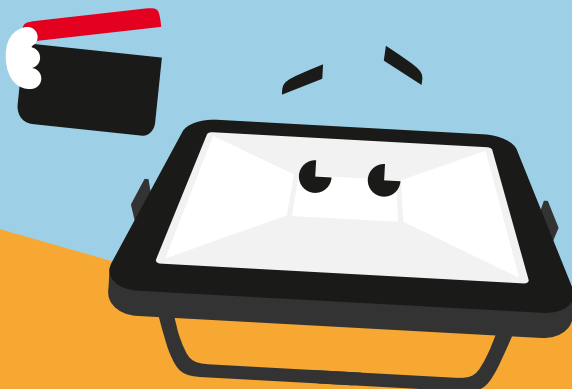
Car parks



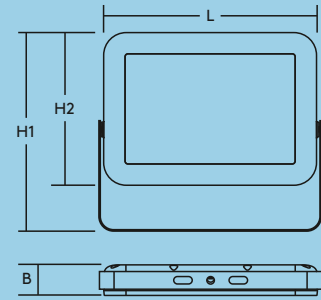
Building facades

Light source Information

- 800lm (10W), 80lm/W, 1600lm (20W), 80lm/W, 2400lm (30W), 80lm/W, 4000lm (50W), 80lm/W, 8000lm (100W), 80lm/W
- 4000K neutral white LED
- Lifetime: 35 000 hour rated life (@L70B50, Ta 25°C)
- CRI 80



	L	B	H1	H2
ALICE LED FL IP65 10W 840	130	26	126	92
ALICE LED FL IP65 20W 840	180	31	169	130
ALICE LED FL IP65 30W 840	180	31	169	130
ALICE LED FL IP65 50W 840	290	41	270	208
ALICE LED FL IP65 100W 840	360	42	331	268



Performance guide

Description	Lumen output	Alternative to Halogen	Alternative to Discharge
ALICE LED 10W	800lm	50W	
ALICE LED 30W	2400lm	150W	
ALICE LED 50W	4000lm	250W	70W
ALICE LED 100W	8000lm	400W	150W

The above table is a guide for replacement of traditional floodlights, using the closest LED alternative offer.

Ordering guide

Description	Wt (kg)	SAP Code	Cat. No.
ALICE LED FL IP65 10W 840	0.4	96666073	AC10W
ALICE LED FL IP65 20W 840	0.75	96628836	
ALICE LED FL IP65 30W 840	0.75	96666074	AC30W
ALICE LED FL IP65 50W 840	2.45	96666075	AC50W
ALICE LED FL IP65 100W 840	3.8	96666076	AC100W

Installation/Mounting

- Suitable for wall or ceiling mounting
- Quick and easy installation
- Pre-wired with mains cable and open cable ends with 1mm² cross section. 100 cm cable for 50 & 100 W flood-lights and 30 cm cable for 10, 20 & 30 W floodlights

Material/Finish

Glass: Tempered glass
 Reflector: Aluminum
 Body: Aluminum die-cast
 Screws: Stainless steel

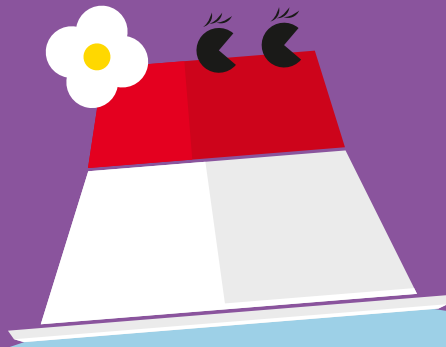


Specification

- Class I electrical
- IP65
- IK08

Amy

Recessed LED Downlight



Meet Amy
With a pleasing aesthetic; Amy is the ideal solution for a vast range of applications

- Consistent light output with no shadowing
- Replacement for traditional 1×18 W, 1×26 W, 2×18 W or 2×26 W compact fluorescent downlights
- Choice of 3000 K or 4000 K to suit application use
- Thermally optimised, deep drawn, aluminium body



800–2000 lumens, up to 95 lm/W



50 000 hours lifetime



Save up to 80% energy compared to compact fluorescent downlights



105, 150 and 200 mm cut-outs



3hr emergency version available

Ideal for...



Corridors



Reception areas



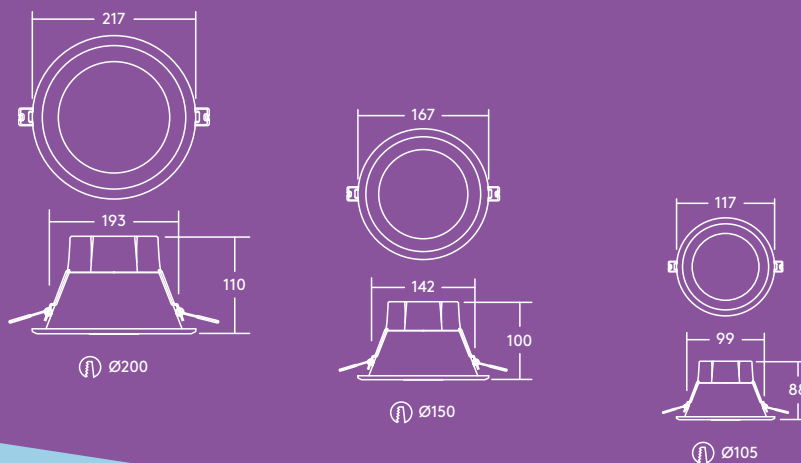
Offices and meeting rooms



Schools and universities

Light source information

- Lifetime 50 000 hours (@L70B50, Ta 25 °C)
- 800lm (9 W), 1000lm (12 W), 1500lm (16 W), 2000lm (21 W), up to 95 lm/W
- Colour temperatures: 4000K and 3000K
- CRI80
- McAdams (initial): 4 step



Performance guide

1000 lumens – Corridor

Ceiling height (m)	Luminaire Spacings (m)	Lux Level Average (E_m)	Uniformity (U_o)	UGR
2.4	3.6 (5 tiles)	76 lux	0.69	25
	3.0 (4 tiles)	90 lux	0.59	25
	2.4 (3 tiles)	113 lux	0.73	25
2.7	3.6 (5 tiles)	70 lux	0.71	25
	3.0 (4 tiles)	82 lux	0.63	25
	2.4 (3 tiles)	104 lux	0.73	25
3.0	3.6 (5 tiles)	64 lux	0.70	25
	3.0 (4 tiles)	75 lux	0.63	25
	2.4 (3 tiles)	96 lux	0.72	25

2000 lumens – Corridor

Ceiling height (m)	Luminaire Spacings (m)	Lux Level Average (E_m)	Uniformity (U_o)	UGR
2.4	3.6 (5 tiles)	140 lux	0.69	25
	3.0 (4 tiles)	164 lux	0.60	25
	2.4 (3 tiles)	208 lux	0.73	25
2.7	3.6 (5 tiles)	129 lux	0.70	25
	3.0 (4 tiles)	151 lux	0.63	25
	2.4 (3 tiles)	191 lux	0.73	25
3.0	3.6 (5 tiles)	118 lux	0.70	25
	3.0 (4 tiles)	138 lux	0.63	25
	2.4 (3 tiles)	176 lux	0.72	25

Based on a 21x2 metre corridor with 70/50/20 reflectances, a 0.80 maintenance factor and the floor as the working plane

Installation/Mounting

Amy LED can be installed into a wide range of ceiling types of 2–20mm thickness (AMY 150 and 200 LED DL) or 2–15mm thickness (AMY 100 LED DL).

Material/Finish

Body: Aluminium, white finish
Diffuser: Polycarbonate

Specification

- Class I electrical
- IP20
- IK02

Ordering guide

Description	Wt (kg)	SAP Code	Cat. No.
AMY 100 LED DL 800 830	0.18	96665583	AY800Z3K
AMY 100 LED DL 800 840	0.18	96665584	AY800Z4K
AMY 150 LED DL 1000 830	0.26	96628352	AY1000Z3K
AMY 150 LED DL 1000 840	0.26	96628353	AY1000Z4K
AMY 150 LED DL 1500 830	0.26	96665585	AY1500Z3K
AMY 150 LED DL 1500 840	0.26	96665586	AY1500Z4K
AMY 200 LED DL 2000 830	0.36	96665587	AY2000Z3K
AMY 200 LED DL 2000 840	0.36	96665588	AY2000Z4K
Emergency versions			
AMY 150 LED DL 1000 830 E3	0.66	96665848	AY1000ZE3K
AMY 150 LED DL 1000 840 E3	0.66	96665849	AY1000ZE4K
AMY 150 LED DL 1500 830 E3	0.66	96665844	AY1500ZE3K
AMY 150 LED DL 1500 840 E3	0.66	96665845	AY1500ZE4K
AMY 200 LED DL 2000 830 E3	0.76	96665846	AY2000ZE3K
AMY 200 LED DL 2000 840 E3	0.76	96665847	AY2000ZE4K
Lighting Control			
SWITCHLITE SLDM		96019208	SLMW30W
SWITCHLITE MRE SLDM ADJ		96239855	
SWITCHLITE CC PROGRAMMER		96240295	
830–3000K, 840–4000K			

Julie

IP65 LED luminaire



Meet Julie

With a tough exterior, Julie is the optimal choice for industrial and commercial applications

- High quality, low energy lighting in wet and dusty environments
- High quality opal diffuser for uniform lighting
- Ideal for replacement and refurbishment projects
- CONNECT version with quick connector for easy installation available
- 1800 lm (20 W), 4000 lm (40 W), 6000 lm (60 W), up to 100 lm/W
- Colour Temperature 4000 K



IP65:
Dust tight and water resistant



Save up to 60% energy compared to T8 fluorescent



IK08 rated
impact resistance



632 mm (2 ft)
1232 mm (4 ft)
1532 mm (6 ft)



3h emergency version available



50 000 hours lifetime

Ideal for...



Car parks



Workshops



Underpasses



Storage facilities

Installation/Mounting

Suitable for surface mounting. 4x10 mm stainless steel self-tapping screws (not included) can be applied to prevent unauthorised opening of the luminaire.

Material/Finish

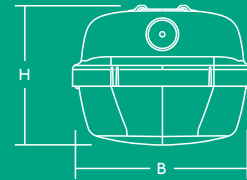
Canopy: Polycarbonate
Diffuser: Opal polycarbonate
Bracket: Stainless steel

Specification

- Class I electrical
- IK08
- IP65

L B H

JULIE 600 LED IP65 1800	632	103	78
JULIE 1200 LED IP65 4000	1232	103	78
JULIE 1500 LED IP65 4000	1532	85	71
JULIE 1500 LED IP65 6000	1532	103	78



Performance guide

4000 lumens – Open plan mezzanine floor

Ceiling height (m)	Luminaire Spacings (m)	Lux Level Average (E _m)	Uniformity (U _o)	UGR
2.4	3.4 × 3.4	236 lux	0.82	25
	2.3 × 3.4	342 lux	0.82	25
	2.3 × 2.3	519 lux	0.78	25
3.0	3.4 × 3.4	222 lux	0.77	25
	2.3 × 3.4	330 lux	0.75	25
	2.3 × 2.3	486 lux	0.74	25
3.5	3.4 × 3.4	208 lux	0.75	25
	2.3 × 3.4	312 lux	0.73	25
	1.8 × 2.8	518 lux	0.72	25

2000 lumens – Open plan mezzanine floor

Ceiling height (m)	Luminaire Spacings (m)	Lux Level Average (E _m)	Uniformity (U _o)	UGR
2.4	4.6 × 4.6	206 lux	0.72	25
	3.4 × 3.4	355 lux	0.84	25
	2.3 × 3.4	546 lux	0.81	25
3.0	4.6 × 4.6	197 lux	0.75	25
	3.4 × 3.4	343 lux	0.78	25
	2.3 × 3.4	512 lux	0.75	25
3.5	3.4 × 4.3	246 lux	0.74	25
	3.4 × 2.4	325 lux	0.75	25
	2.8 × 2.8	506 lux	0.73	25

Based on a 13.8 × 13.8 metre open plan mezzanine floor with 70/50/20 reflectances, a 0.80 maintenance factor and the floor as the working plane.

Light source information

- Life time 50 000 hours (@L70B50, T_a 25 °C)
- 1800lm (20W), 4000lm (40W), 6000lm (60W), up to 100lm/W
- Colour temperature 4000K
- CRI80
- McAdams (initial): 4 step

Ordering guide

Description	Wt (kg)	SAP Code	Cat. No.
★ JULIE 600 LED IP65 1800 840	1.20	96628548	JU1800Z2F
JULIE 1200 LED IP65 4000 840	1.50	96665577	JU4000Z4F
JULIE 1500 LED IP65 4000 840	1.56	96628396	JU4000Z5F
JULIE 1500 LED IP65 6000 840	1.95	96665580	JU6000Z5F
JULIE 1200 LED IP65 4000 840 CONNECT	1.56	96665578	JU4000ZQC4K
JULIE 1500 LED IP65 6000 840 CONNECT	1.95	96665581	JU6000ZQC4K

Emergency versions

JULIE 1200 LED IP65 4000 840 E3	1.90	96665579	JU4000ZE4F
JULIE 1500 LED IP65 4000 840 E3	1.96	96628397	JU4000ZE5F
JULIE 1500 LED IP65 6000 840 E3	2.35	96665582	JU6000ZE5F

Spare part

JULIE LED Spare Mount Kit	96628409	JUACCKIT
JULIE LED CONNECT Spare Mount Kit	96628410	JUCONKIT

Lighting Control

SWITCHLITE SLD BATTEN PIR	96601988
SWITCHLITE CC PROGRAMMER	96240295

CONNECT: with AAG STUCCHI quick connector

★ New



Lara

Circular IP65 bulkhead



Meet Lara

Sporting many different looks, Lara is the ultimate choice for a range of indoor and outdoor settings

- 1200lm LED (direct replacement for 1x28 W 2D) and 800lm LED (direct replacement for 1x16 W 2D)
- Frosted diffuser ensures a homogeneous light effect and visual comfort
- Sealed to IP65 for protected exterior applications
- Robust construction tested up to IK08 impact resistance
- Optional trim accessories in 4 designs: bezel, eyelid, eyelid grille and grille
- 2 Colours: white (RAL 9003) and black (RAL 9011)
- Optional: Integral photocell or microwave presence sensor maximising the energy saving potential



1200 and 800 lumens, up to 90lm/W



50 000 hours lifetime



Save up to 70% energy compared with luminaires with 2D lamps



300 and 250 mm diameter



3h emergency version available



Integral photocell or presence sensor

Ideal for...



Circulation Corridors



Public entrance areas



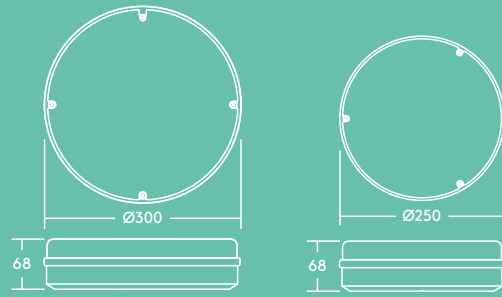
Underpasses



Stairwells

Light source information

- 1200lm (13W), 90lm/W and 800lm (10W), 80lm/W
- 4000K neutral white LED
- Lifetime 50 000 hours (@L70B50, Ta 25 °C)
- CRI80



Bezel trim BLK Bezel trim WH Eyelid trim Eyelid grille trim Grille trim

Performance guide

800 lumens – Corridor

Ceiling height (m)	Luminaire Spacings (m)	Lux Level Average (E _m)	Uniformity (U _o)	UGR
2.4	3.0	63 lux	0.66	25
	2.4	80 lux	0.74	25
	1.8	101 lux	0.71	25
2.7	3.0	58 lux	0.66	25
	2.4	70 lux	0.71	25
	1.8	93 lux	0.70	25
3.0	3.0	54 lux	0.66	25
	2.4	68 lux	0.72	25
	1.8	91 lux	0.71	25

1200 lumens – Corridor

2.4	3.0	92 lux	0.64	25
	2.4	117 lux	0.73	25
	1.8	162 lux	0.74	25
2.7	3.0	85 lux	0.63	25
	2.4	108 lux	0.72	25
	1.8	150 lux	0.65	25
3.0	3.0	82 lux	0.66	25
	2.4	104 lux	0.72	25
	1.8	130 lux	0.55	25

Based on a 21×2 metre corridor with 70/50/20 reflectances, a 0.80 maintenance factor and the floor as the working plane.

Installation/Mounting

- Suitable for wall or ceiling mounting
- Quick and easy installation
- Suitable for BESA fixing

Material/Finish

Body: Polycarbonate
Diffuser: Polycarbonate

Integral photocell & presence sensor

Lara's integral photocell option will light from dusk till dawn. (Operation level: approx. 20 lux ON, approx. 30 lux OFF).

Lara's microwave sensor option will ensure that light is only delivered when needed. The motion detection range and time duration is fully adjustable, with the additional benefit of a daylight sensor for illuminance levels between 2 and 50 lux.

Ordering guide

Description	Wt (kg)	SAP Code	Cat. No.
LARA LED 250 800 840 WH	0.7	96666101	LAS800ZW4K
LARA LED 250 800 840 BLK	0.7	96666102	LAS800ZB4K
LARA LED 250 800 840 WH E3	0.9	96666103	LAS800ZWE4K
LARA LED 250 800 840 BLK E3	0.9	96666104	LAS800ZBE4K
LARA LED 300 1200 840 WH	1.1	96666105	LAL1200ZW4K
LARA LED 300 1200 840 BLK	1.1	96666106	LAL1200ZB4K
LARA LED 300 1200 840 WH E3	1.2	96666107	LAL1200ZEW4K
LARA LED 300 1200 840 BLK E3	1.2	96666108	LAL1200ZEB4K
LARA LED 300 1000 840 BEZEL TRIM WH	1.3	96628900	
LARA LED 250 800 840 MWS WH	0.7	96666109	LAS800ZMW4K
LARA LED 250 800 840 MWS BLK	0.7	96666110	LAS800ZMB4K
LARA LED 250 800 840 MWS WH E3	0.9	96666111	LAS800ZMEW4K
LARA LED 250 800 840 MWS BLK E3	0.9	96666112	LAS800ZMEB4K
LARA LED 300 1200 840 MWS WH	1.1	96666113	LAL1200ZMW4K
LARA LED 300 1200 840 MWS BLK	1.1	96666114	LAL1200ZMB4K
LARA LED 300 1200 840 MWS WH E3	1.2	96666115	LAL1200ZMEW4K
LARA LED 300 1200 840 MWS BLK E3	1.2	96666116	LAL1200ZMEB4K
LARA LED 250 800 840 PC WH	0.7	96666117	LAS800ZPW4K
LARA LED 250 800 840 PC BLK	0.7	96666118	LAS800ZPB4K
LARA LED 300 1200 840 PC BLK	1.1	96666119	LAL1200ZPB4K
LARA LED 300 1200 840 PC WH	1.1	96666120	LAL1200ZPW4K

Accessories

LARA BEZEL TRIM SMALL 250 WH	0.2	96666121	LASBEZW
LARA BEZEL TRIM LARGE 300 WH	0.2	96666122	LALBEZW
LARA BEZEL TRIM SMALL 250 BLK	0.2	96666123	LASBEZB
LARA BEZEL TRIM LARGE 300 BLK	0.2	96666124	LALBEZB
LARA EYELID TRIM SMALL 250 BLK	0.2	96666125	LASEYEB
LARA EYELID TRIM LARGE 300 BLK	0.3	96666126	LALAYEB
LARA EYELID GRILLE TRIM SMALL 250 BLK	0.2	96666127	LASEYGRIB
LARA EYELID GRILLE TRIM LARGE 300 BLK	0.3	96666128	LALAYGRIB
LARA GRILLE TRIM SMALL 250 BLK	0.2	96666129	LASGRIB
LARA GRILLE TRIM LARGE 300 BLK	0.3	96666130	LALGRIB
LARA Tamperproof Screw Kit		96628612	LAVPSKIT

Lighting Control

SWITCHLITE MRE SLDM ADJ	96239855	SLMW30W
SWITCHLITE SLDM	96019208	
SWITCHLITE CC PROGRAMMER	96240295	

MWS: Microwave presence sensor
BLK: black; WH: white

E3: 3 hour emergency lighting
PC: Photocell

Zoe

Slim downlight



Meet Zoe

Slim and adaptable,
Zoe is perfectly suited
to everyday needs

- Uniform light surface
- Product height of only 12mm:
fits various ceiling types
- Choice of 3000K or 4000K to suit
application use
- Replaces conventional downlights with
1×18 W, 1×26 W and 2×18 W CFL and offers
up to 50% energy saving
- Tool-free installation



1500lm

900lm

600lm



Available in
600, 900 and
1500 lumen
versions



Save up to
50% energy
compared to
compact
fluorescent
downlights



IP44:
splashed
water
resistant from
any direction



110, 160
and 210 mm
cut-outs

Ideal for...



Corridors



Reception areas



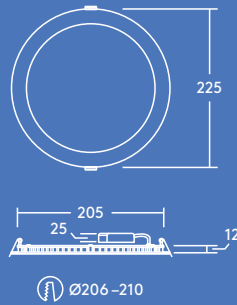
Offices and meeting rooms



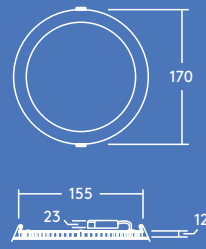
Schools and universities

Light source information

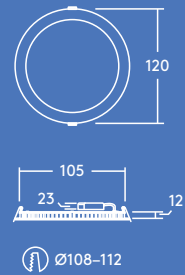
- 600lm (8W), 900lm (12W) and 1500lm (18W),
up to 85lm/W
- Color temperatures: 4000K and 3000K
- 35000 hour rated life (@L70B50, Ta 25°C)
- CRI80
- McAdam (initial): 4 step



Ø206 -210



Ø158 -162



Ø108-112

Performance guide

1500 lumens – Corridor

Ceiling height (m)	Luminaire Spacings (m)	Lux Level Average (E _m)	Uniformity (U _o)	UGR
2.4	1.2	310 lux	0.71	25
	1.8	199 lux	0.71	25
	2.4	157 lux	0.73	25
	3.0	124 lux	0.66	25
	3.6	105 lux	0.73	25
2.7	1.2	274 lux	0.68	25
	1.8	183 lux	0.68	25
	2.4	138 lux	0.72	25
	3.0	114 lux	0.65	25
	3.6	97.1 lux	0.72	25
3.0	1.2	266 lux	0.70	25
	1.8	178 lux	0.70	25
	2.4	134 lux	0.71	25
	3.0	105 lux	0.66	25
	3.6	89.4 lux	0.72	25

Based on a 21.6 x 2 metre corridor with 70/50/20 reflectances, a 0.80 maintenance factor and the working plane at floor level

Ordering guide

Description	Wt (kg)	SAP Code	Cat. No.
ZOE LED DL 110 600 840	0.25	96666088	ZO600Z4K
ZOE LED DL 160 900 840	0.40	96666089	ZO900Z4K
ZOE LED DL 210 1500 840	0.55	96666090	ZO1500Z4K
ZOE LED DL 110 600 830	0.25	96666092	ZO600Z3K
ZOE LED DL 160 900 830	0.40	96666093	ZO900Z3K
ZOE LED DL 210 1500 830	0.55	96666094	ZO1500Z3K
Lighting Control			
SWITHLITE SLDM		96019208	SLMW30W
SWITHLITE MRE SLDM ADJ		96239855	
SWITHLITE CC PROGRAMMER		96240295	
Accessories			
Just Emergency PLUG&PLAY E3 Kit		96628839	
Just Emergency PLUG&PLAY Self Test E3 Kit		96628840	

830–3000K, 840–4000K

Installation/Mounting

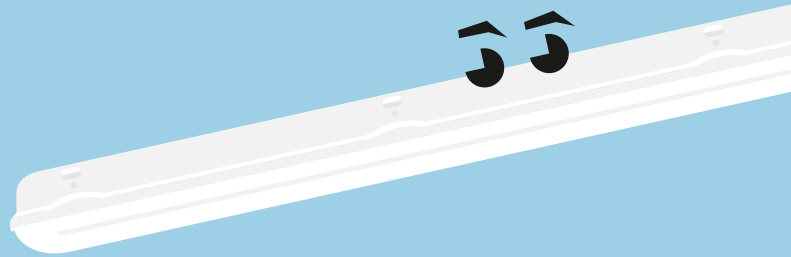
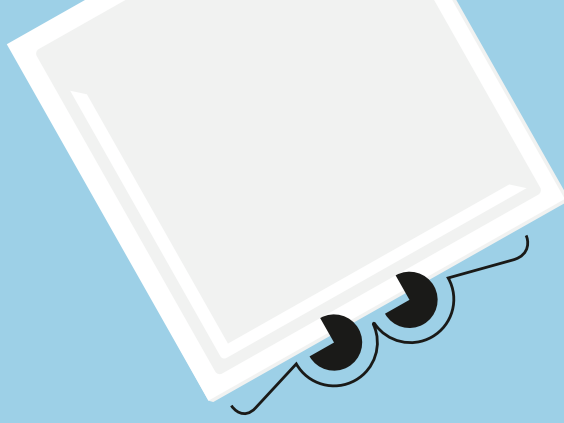
- Recessed installation into a wide range of ceiling types
- Easy installation thanks to an external connector box enabling loop-in loop-out wiring

Material/Finish

Body: Aluminum white finish
Diffuser: PS

Specification

- Class II electrical
- IP44
- IK02



thorneco



THORNecoLED



thorneco

Contact us

UK: 0844 855 4810 | IRE: +353 (0) 1 4922877
trade@zumtobelgroup.com

thorn-eco.com

Thorn Lighting is constantly developing and improving its products. All descriptions, illustrations, drawings and specifications in this publication present only general particulars and shall not form part of any contract. The right is reserved to change specifications without prior notification or public announcement. All goods supplied by the company are supplied subject to the company's General Conditions of Sale, a copy of which is available on request. All measurements are in millimetres and weights in kilograms unless otherwise stated.

SAP: 96644228 Publication Date: 09/2017

