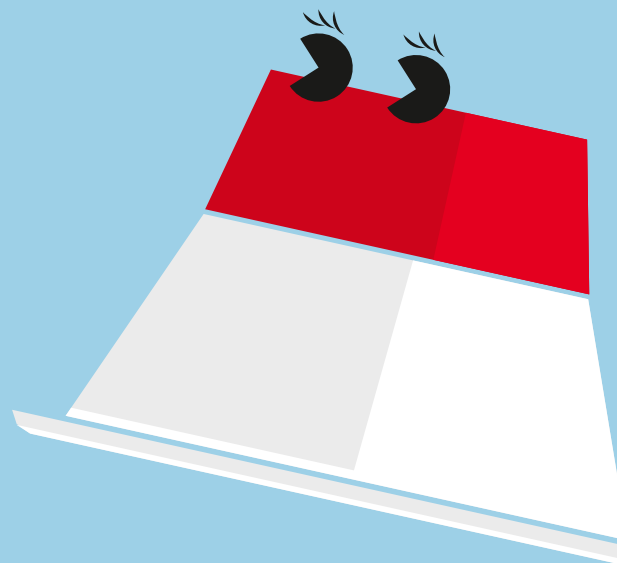
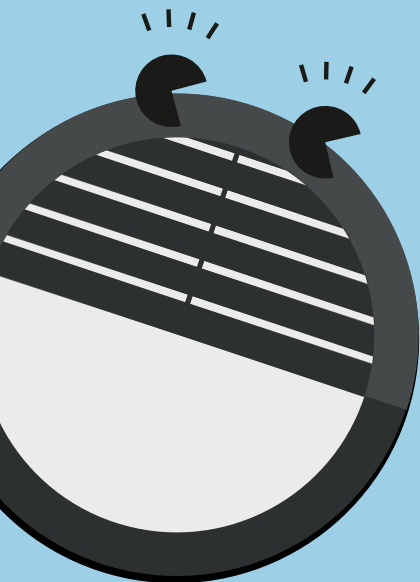


THORN



Economical LED lighting





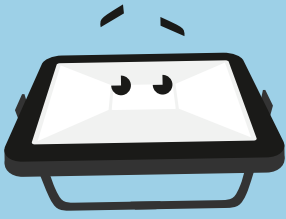
Meet the family

Introducing our range of best in class, economical LED luminaires. They're the ideal like-for-like replacements for all lighting sources – from industrial environments, to offices and outdoors. Simple to install, longer lasting and energy saving, you'll be friends in no time.

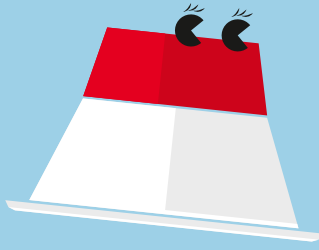


Five year warranty





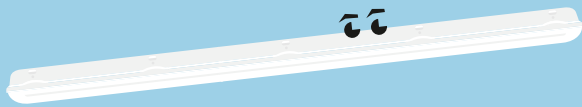
Alice
LED floodlight



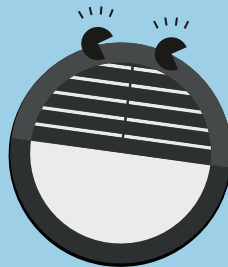
Amy
Recessed LED
Downlight



Emma
LED batten



Julie
IP65 LED luminaire



Lara
Circular IP65
bulkhead



Mike
LED batten



Monty
Recessed LED
luminaire



Tom
Circular IP66
bulkhead



Zoe
Slim downlight

Alice

LED floodlight

Meet Alice

Both strong and bright,
Alice is robust and
reliable no matter the
weather

- 5 different lumen packages from 10W to 100W
- Very lightweight, compact and streamline design
- Universal mounting bracket allows wall or surface mounting with the possibility of tilting upwards or downwards
- Pre-wired with mains cable



800, 1600,
2400, 4000
and 8000
lumens



Save up to
70% energy
compared
with halogen
floodlights



Sealed to IP65
for protected
exterior
applications



IK08 rated
impact
resistance

Ideal for...



Gardens



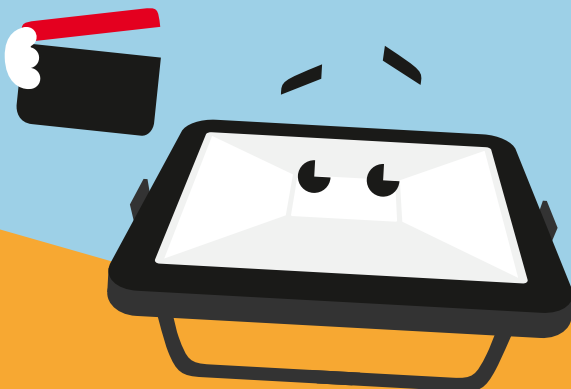
Car parks



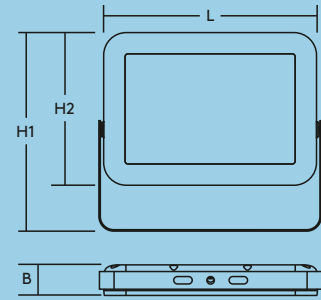
Building facades

Light source Information

- 800lm (10W), 80lm/W, 1600lm (20W), 80lm/W, 2400lm (30W), 80lm/W, 4000lm (50W), 80lm/W, 8000lm (100W), 80lm/W
- 4000K neutral white LED
- Lifetime: 35000 hour rated life (@L70B50, Ta 25°C)
- CRI80



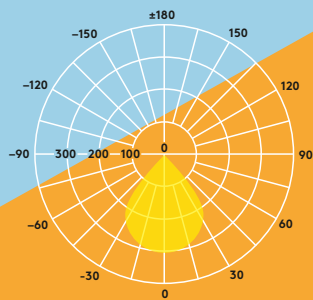
	L	B	H1	H2
ALICE LED FL IP65 10W 840	130	26	126	92
ALICE LED FL IP65 20W 840	180	31	169	130
ALICE LED FL IP65 30W 840	180	31	169	130
ALICE LED FL IP65 50W 840	290	41	270	208
ALICE LED FL IP65 100W 840	360	42	331	268



Lighting distribution

Alice 2400lm (30 W)

cd/klm ULOR: 0% DLOR: 100% LOR: 100%



Ordering guide

Description	Wt (kg)	SAP Code
ALICE LED FL IP65 10W 840	0.4	96666073
ALICE LED FL IP65 20W 840	0.75	96628836
ALICE LED FL IP65 30W 840	0.75	96666074
ALICE LED FL IP65 50W 840	2.45	96666075
ALICE LED FL IP65 100W 840	3.8	96666076

Installation/Mounting

- Suitable for wall or ceiling mounting
- Quick and easy installation
- Pre-wired with mains cable and open cable ends with 1mm² cross section. 100 cm cable for 50 & 100 W flood-lights and 30 cm cable for 10, 20 & 30 W floodlights

Material/Finish

Glass: Tempered glass
 Reflector: Aluminum
 Body: Aluminum die-cast
 Screws: Stainless steel

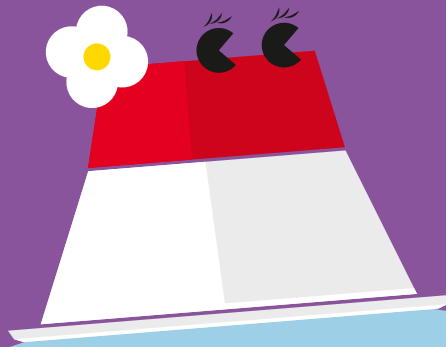


Specification

- Class I electrical
- IP65
- IK08

Amy

Recessed LED Downlight



Meet Amy
With a pleasing aesthetic; Amy is the ideal solution for a vast range of applications

- Consistent light output with no shadowing
- Replacement for traditional 1×18 W, 1×26 W, 2×18 W or 2×26 W compact fluorescent downlights
- Choice of 3000 K or 4000 K to suit application use
- Thermally optimised, deep drawn, aluminium body



800–2000 lumens, up to 95 lm/W



50 000 hours lifetime



Save up to 80% energy compared to compact fluorescent downlights



105, 150 and 200 mm cut-outs



3hr emergency version available

Ideal for...



Corridors



Reception areas



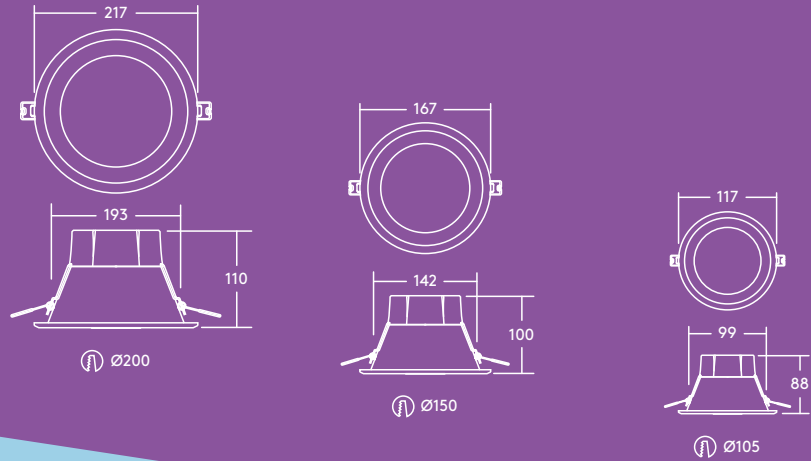
Offices and meeting rooms



Schools and universities

Light source information

- Lifetime 50 000 hours (@L70B50, Ta 25 °C)
- 800lm (9 W), 1000lm (12 W), 1500lm (16 W), 2000lm (21 W), up to 95 lm/W
- Colour temperatures: 4000K and 3000K
- CRI80
- McAdams (initial): 4 step

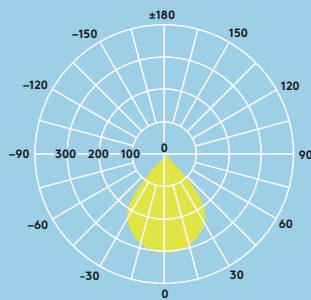


Lighting distribution

Amy LED 2000lm

cd/klm ULOR: 0% DLOR: 100% LOR: 100%

95lm/W



Installation/Mounting

Amy LED can be installed into a wide range of ceiling types of 2–20 mm thickness (AMY 150 and 200 LED DL) or 2–15 mm thickness (AMY 100 LED DL).

Material/Finish

Body: Aluminium, white finish
Diffuser: Polycarbonate

Specification

- Class I electrical
- IP20
- IK02

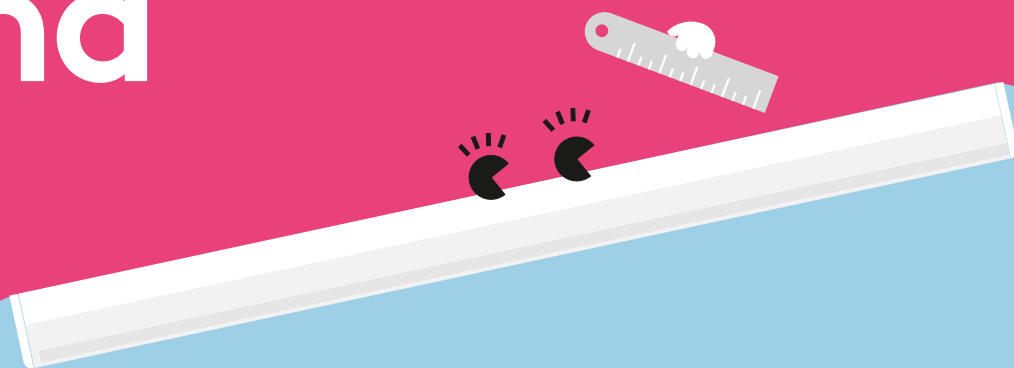
Ordering guide

Description	Wt (kg)	SAP Code
AMY 100 LED DL 800 830	0.18	96665583
AMY 100 LED DL 800 840	0.18	96665584
AMY 150 LED DL 1000 830	0.26	96628352
AMY 150 LED DL 1000 840	0.26	96628353
AMY 150 LED DL 1500 830	0.26	96665585
AMY 150 LED DL 1500 840	0.26	96665586
AMY 200 LED DL 2000 830	0.36	96665587
AMY 200 LED DL 2000 840	0.36	96665588
Emergency versions		
AMY 150 LED DL 1000 830 E3	0.66	96665848
AMY 150 LED DL 1000 840 E3	0.66	96665849
AMY 150 LED DL 1500 830 E3	0.66	96665844
AMY 150 LED DL 1500 840 E3	0.66	96665845
AMY 200 LED DL 2000 830 E3	0.76	96665846
AMY 200 LED DL 2000 840 E3	0.76	96665847

830–3000K, 840–4000K

Emma

LED batten



Meet Emma

Sleek and sophisticated,
Emma's effortless style
fits right in

- Direct replacement for conventional battens in terms of light performance and length
- Reliable integrated LED technology, ensuring maintenance-free installation and a long lifetime
- Fully homogeneous illumination
- Elegant design: narrow profile and lightweight
- High efficacy of up to 120 lm/W – exceeding building regulation requirements
- Flexible mounting brackets for any fixing hole distance
- Easy installation thanks to an entry hatch on the back of the luminaire, which allows access to the terminal block for wiring



4000 and 6000 lumens, up to 120 lm/W



50 000 hours lifetime



Save up to 50% energy compared with fluorescent battens



1500 mm (6000 lm) and 1200 mm (4000 lm)



IK08 rated impact resistance

Ideal for...



Breakout areas



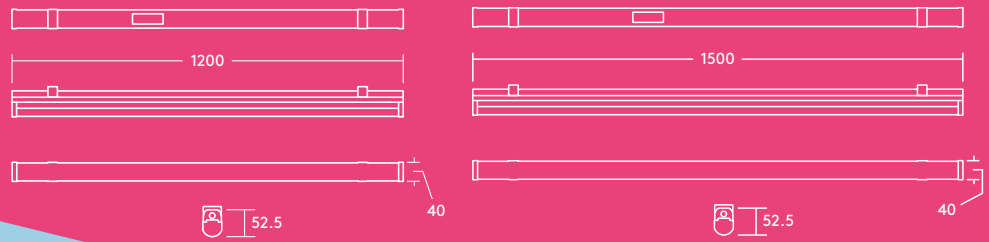
Circulation Corridors



Cove lighting

Light source information

- 4000 lm (35 W), 115 lm/W and 6000 lm (50 W), 120 lm/W
- 4000 K neutral white LED
- 50 000 hour rated life (@L70B50, Ta 25 °C)
- CRI 80
- McAdam (initial): 5 step

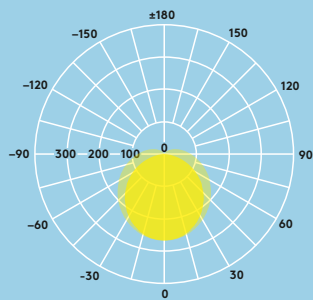


Lighting distribution

Emma 4000lm

cd/klm ULOR: 11% DLOR: 89% LOR: 100%

120lm/W



Ordering guide

Description	Wt (kg)	SAP Code
EMMA LED 1200 4000 840	0.8	96666098
EMMA LED 1500 6000 840	1.2	96666099
Accessories		
EMMA LED SUSPENSION KIT		96628615

Installation/Mounting

- Surface mounting with surface mount brackets (included)
- Suspended mounting with suspension kit (optional)

Material/Finish

Body: Aluminum
 Diffuser: PC, opal white
 End caps: PC, white (RAL 9016)
 Ceiling clips: Stainless steel

Specification

- Class I electrical
- IP20
- IK08



Julie

IP65 LED luminaire



Meet Julie

With a tough exterior, Julie is the optimal choice for industrial and commercial applications

- High quality, low energy lighting in wet and dusty environments
- High quality opal diffuser for uniform lighting
- Ideal for replacement and refurbishment projects
- CONNECT version with quick connector for easy installation available
- 1800lm (20 W), 4000lm (40 W), 6000lm (60 W), up to 100lm/W
- Colour Temperature 4000 K



IP65:
Dust tight and water resistant



Save up to 60% energy compared to T8 fluorescent



IK08 rated
impact resistance



Lengths of 632 mm, 1232 mm and 1532 mm



3h emergency version available



50 000 hours lifetime

Ideal for...



Car parks



Workshops



Underpasses



Storage facilities

Installation/Mounting

Suitable for surface mounting. 4x10mm stainless steel self-tapping screws (not included) can be applied to prevent unauthorised opening of the luminaire.

Material/Finish

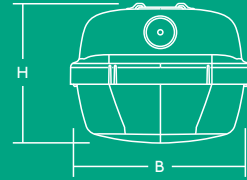
Canopy: Polycarbonate
Diffuser: Opal polycarbonate
Bracket: Stainless steel

Specification

- Class I electrical
- IK08
- IP65

L B H

JULIE 600 LED IP65 1800	632	103	78
JULIE 1200 LED IP65 4000	1232	103	78
JULIE 1500 LED IP65 4000	1532	85	71
JULIE 1500 LED IP65 6000	1532	103	78

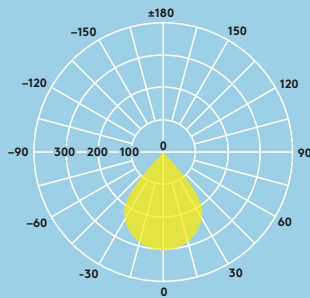


Lighting distribution

Julie LED 6000lm

cd/klm ULOR: 8% DLOR: 92% LOR:100%

100lm/W



Ordering guide

Description	Wt (kg)	SAP Code
★ JULIE 600 LED IP65 1800 840	1.20	96628548
JULIE 1200 LED IP65 4000 840	1.50	96665577
JULIE 1500 LED IP65 4000 840	1.56	96628396
JULIE 1500 LED IP65 6000 840	1.95	96665580
JULIE 1200 LED IP65 4000 840 CONNECT	1.56	96665578
JULIE 1500 LED IP65 6000 840 CONNECT	1.95	96665581
Emergency versions		
JULIE 1200 LED IP65 4000 840 E3	1.90	96665579
JULIE 1500 LED IP65 4000 840 E3	1.96	96628397
JULIE 1500 LED IP65 6000 840 E3	2.35	96665582
Spare part		
JULIE LED Spare Mount Kit		96628409
JULIE LED CONNECT Spare Mount Kit		96628410

CONNECT : with AAG STUCCHI quick connector

★ New

Light source information

- Life time 50 000 hours (@L70B50, Ta 25°C)
- 1800lm (20W), 4000lm (40W), 6000lm (60W), up to 100lm/W
- Colour temperature 4000K
- CRI80
- McAdams (initial): 4 step



Lara

Circular IP65 bulkhead



Meet Lara

Sporting many different looks, Lara is the ultimate choice for a range of indoor and outdoor settings

- 1200 lm LED (direct replacement for 1×28 W 2D) and 800 lm LED (direct replacement for 1×16 W 2D)
- Frosted diffuser ensures a homogeneous light effect and visual comfort
- Sealed to IP65 for protected exterior applications
- Robust construction tested up to IK08 impact resistance
- Optional trim accessories in 4 designs: bezel, eyelid, eyelid grille and grille
- 2 Colours: white (RAL 9003) and black (RAL 9011)
- Optional: Integral photocell or microwave presence sensor maximising the energy saving potential



1200 and 800 lumens, up to 90 lm/W



50 000 hours lifetime



Save up to 70% energy compared with luminaires with 2D lamps



300 and 250 mm diameter



3h emergency version available



Integral photocell or presence sensor

Ideal for...



Circulation Corridors



Public entrance areas



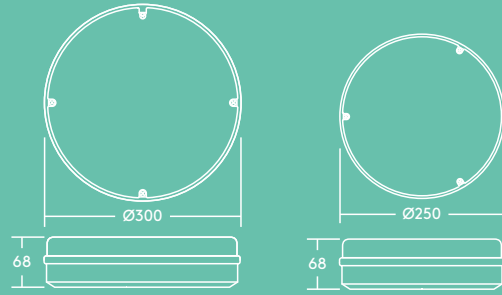
Underpasses



Stairwells

Light source information

- 1200 lm (13 W), 90 lm/W and 800 lm (10 W), 80 lm/W
- 4000 K neutral white LED
- Lifetime 50 000 hours (@L70B50, Ta 25 °C)
- CRI 80

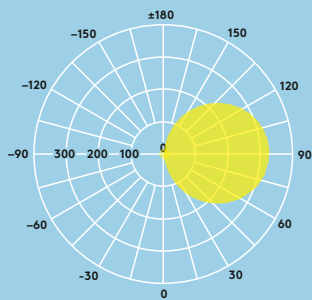


Bezel trim BLK Bezel trim WH Eyelid trim Eyelid grille trim Grille trim

Lighting distribution

Lara 1200lm

cd/klm ULOR: 50% DLOR: 50% LOR: 100%



Installation/Mounting

- Suitable for wall or ceiling mounting
- Quick and easy installation
- Suitable for BESA fixing

Material/Finish

Body: Polycarbonate
Diffuser: Polycarbonate

Integral photocell & presence sensor

Lara's integral photocell option will light from dusk till dawn. (Operation level: approx. 20lux ON, approx. 30lux OFF).

Lara's microwave sensor option will ensure that light is only delivered when needed. The motion detection range and time duration is fully adjustable, with the additional benefit of a daylight sensor for illuminance levels between 2 and 50lux.

Ordering guide

Description	Wt (kg)	SAP Code
LARA LED 250 800 840 WH	0.7	96666101
LARA LED 250 800 840 BLK	0.7	96666102
LARA LED 250 800 840 WH E3	0.9	96666103
LARA LED 250 800 840 BLK E3	0.9	96666104
LARA LED 300 1200 840 WH	1.1	96666105
LARA LED 300 1200 840 BLK	1.1	96666106
LARA LED 300 1200 840 WH E3	1.2	96666107
LARA LED 300 1200 840 BLK E3	1.2	96666108
LARA LED 300 1000 840 BEZEL TRIM WH	1.3	96628900
LARA LED 250 800 840 MWS WH	0.7	96666109
LARA LED 250 800 840 MWS BLK	0.7	96666110
LARA LED 250 800 840 MWS WH E3	0.9	96666111
LARA LED 250 800 840 MWS BLK E3	0.9	96666112
LARA LED 300 1200 840 MWS WH	1.1	96666113
LARA LED 300 1200 840 MWS BLK	1.1	96666114
LARA LED 300 1200 840 MWS WH E3	1.2	96666115
LARA LED 300 1200 840 MWS BLK E3	1.2	96666116
LARA LED 250 800 840 PC WH	0.7	96666117
LARA LED 250 800 840 PC BLK	0.7	96666118
LARA LED 300 1200 840 PC BLK	1.1	96666119
LARA LED 300 1200 840 PC WH	1.1	96666120
Accessories		
LARA BEZEL TRIM SMALL 250 WH	0.2	96666121
LARA BEZEL TRIM LARGE 300 WH	0.2	96666122
LARA BEZEL TRIM SMALL 250 BLK	0.2	96666123
LARA BEZEL TRIM LARGE 300 BLK	0.2	96666124
LARA EYELID TRIM SMALL 250 BLK	0.2	96666125
LARA EYELID TRIM LARGE 300 BLK	0.3	96666126
LARA EYELID GRILLE TRIM SMALL 250 BLK	0.2	96666127
LARA EYELID GRILLE TRIM LARGE 300 BLK	0.3	96666128
LARA GRILLE TRIM SMALL 250 BLK	0.2	96666129
LARA GRILLE TRIM LARGE 300 BLK	0.3	96666130
LARA Tamperproof Screw Kit		96628612

MWS: Microwave presence sensor
BLK: black; WH: white
E3: 3 hour emergency lighting
PC: Photocell

Mike



also known as
Mr. Minilux
LED batten

Meet Mike

A reliable and compact LED batten, Mike helps provide an ambient environment

- Shadow free continuous light thanks to well designed end caps
- High quality diffuser ensures uniform light without visible spots
- Can be individual or continuous mounted
- Supplied complete with starter lead, mounting kit, connector lead and interconnector



900 lm and
1800 lm, up to
90 lm/W



40% energy
savings
compared to
T5 fluorescent



1170 mm
(1800 lm) and
570 mm
(900 lm)

Ideal for...



Cove lighting



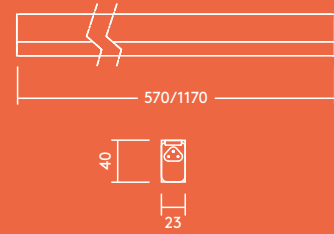
Cabinet lighting



Residential


Light source information

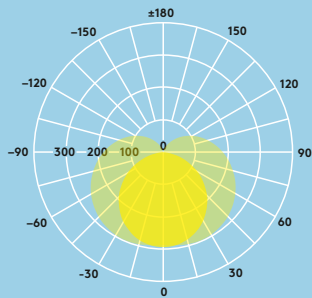
- Lifetime 35 000 hours (@L70B50, Ta 25 °C)
- 900 lm (10 W), 1800 lm (18 W), 90 lm/W @ 4000 K
- Colour temperature 3000 K, 4000 K
- CRI 80
- McAdams (initial): 5 step



Lighting distribution

Mike alias Minilux LED II 1170 mm 1800lm
cd/klm ULOR: 23% DLOR: 77% LOR: 100%

90lm/W 



Ordering guide

Description	Wt (kg)	SAP Code
Mike MINILUX2 LED900-L830 HF L570	0.17	96644485
Mike MINILUX2 LED900-L840 HF L570	0.17	96644486
Mike MINILUX2 LED1800-L830 HF L1170	0.29	96644483
Mike MINILUX2 LED1800-L840 HF L1170	0.29	96644484
Spare part		
Mike MINILUX2 LED Spare Mount Kit		96628411

830-3000K, 840-4000K

Installation/Mounting

- Suitable for surface mounting.
- The fitting can be mounted individually or continuously (max. 10 battens).

Material/Finish

Body and diffuser: Dual-color extruded polycarbonate
End cap: Opal polycarbonate

Specification

- Class I electrical
- IP20
- IK02

Monty

also known as
Mr. Moduline
Recessed LED luminaire



Meet Monty

An economical LED luminaire, Monty provides quality light with maximum efficiency

- High power LED module and high performance optics deliver optimal luminaire efficiency
- Lay in installation
- 3h emergency version available



3200 lumens,
100lm/W



35 000 hours
lifetime



40% energy
savings
compared to
T5 fluorescent

Ideal for...



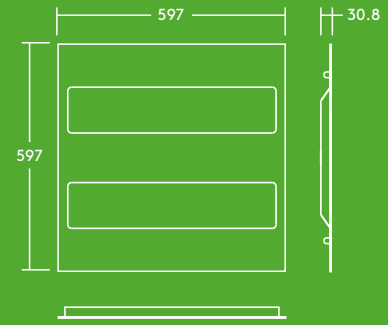
Breakout areas



Circulation areas

Light source information

- 3200lm (32W), 100lm/W
- Colour temperature 3000K, 4000K
- 35000 hour rated life (@L70B50, Ta 25°C)
- CRI80
- McAdam (initial): 5 step

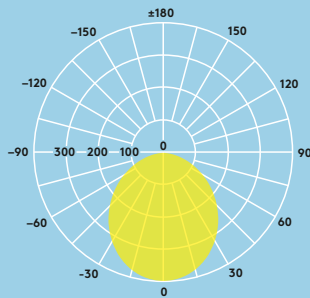


Lighting distribution

Monty alias Moduline 3200lm

cd/klm ULOR: 0% DLOR: 100% LOR: 100%

100lm/W 



Ordering guide

Description	Wt (kg)	SAP Code
Monty Moduline LED II 606 3200lm HF L830	3.0	22662551
Monty Moduline LED II 606 3200lm HF L840	3.0	22662560
Emergency version		
Monty Moduline LED II 606 3200lm HF L840 E3	3.4	22170104

830-3000K, 840-4000K

Installation/Mounting

- Suitable for recessed lay-in installation of standard exposed T-grid ceilings.
- Electrical connection via piano key terminal block behind quick access hatch.

Material/Finish

Body: White painted steel
Diffuser: Opal PS

Specification

- Class I electrical
- IP20
- IK02

Tom

Circular IP66 bulkhead



Meet Tom Comfortable both indoors and out, he's ready for anything

- Direct replacement for 2×18 W CFL
- Frosted diffuser ensures a homogeneous light effect and visual comfort
- 2 designs: Standard (1200 lm) and Eyelid (900 lm)
- 2 colours: White (RAL 9010) and black (RAL 9005)
- Optional: Integrated microwave presence sensor maximising the energy saving potential



900 and 1200 lumens, up to 67lm/W



Save up to 50% energy compared with CFL luminaires



30 000 hours lifetime



300 mm diameter



IK08 rated impact resistance



Sealed to IP66 for protected exterior applications

Ideal for...



Corridors



Public entrance areas



Stairwells



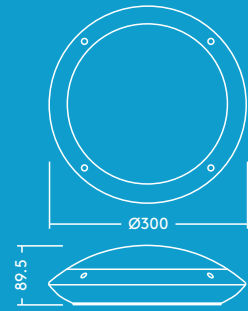
Underpasses



Toilets and bathrooms

Light source information

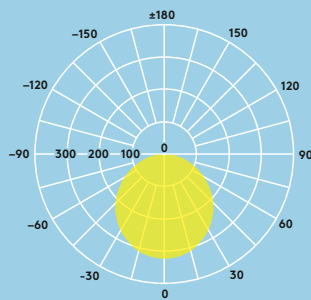
- 1200lm (18W), 67lm/W and 900lm (18W), 53lm/W
- 4000K neutral white LED
- Life time 30 000 hours (@L70B50, Ta 25 °C)
- CRI80
- Beam angle: 120°



Lighting distribution

Tom 1200lm

cd/klm ULOR: 3% DLOR: 97% LOR:100%



Ordering guide

Description	Wt (kg)	SAP Code
TOM LED 300 1200 840 WH	0.6	96666080
TOM LED 300 1200 840 BLK	0.6	96666081
TOM LED 300 1200 840 MWS WH	0.6	96666082
TOM LED 300 1200 840 MWS BLK	0.6	96666083
TOM LED EYE 300 900 840 WH	0.6	96666084
TOM LED EYE 300 900 840 BLK	0.6	96666085
TOM LED EYE 300 900 840 MWS WH	0.6	96666086
TOM LED EYE 300 900 840 MWS BLK	0.6	96666087

MWS: Microwave sensor

BLK: black; WH: white

EYE: Eyelid

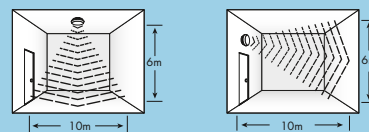
Installation/Mounting

- Suitable for wall or ceiling mounting
- Quick and easy installation thanks to a piano key terminal for wires up to 2.5mm²

Material/Finish

Body: ABS
Diffuser: Polycarbonate

Sensor Range



Specification

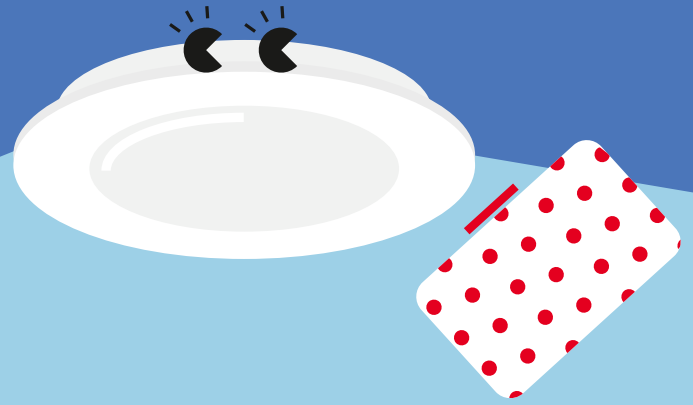
- Class II electrical
- IP66
- IK08

Controllability

Sensitivity	10%, 50%, 75%, 100%
Time	5 sec, 90 sec, 5 min, 15 min
lux	2lux, 10lux, 50lux, disable

Zoe

Slim downlight



Meet Zoe

Slim and adaptable,
Zoe is perfectly suited
to everyday needs

- Uniform light surface
- Product height of only 12mm: fits various ceiling types
- Choice of 3000K or 4000K to suit application use
- Replaces conventional downlights with 1×18 W, 1×26 W and 2×18 W CFL and offers up to 50% energy saving
- Tool-free installation



1500lm

900lm

600lm



Available in
600, 900 and
1500 lumen
versions



Save up to
50% energy
compared to
compact
fluorescent
downlights



110, 160
and 210 mm
cut-outs



IP44: splash
resistant

Ideal for...



Corridors



Reception areas



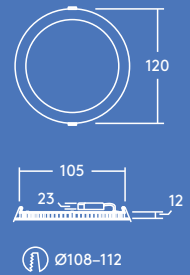
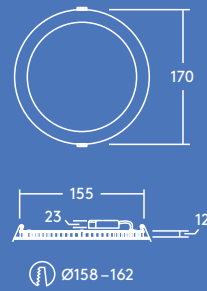
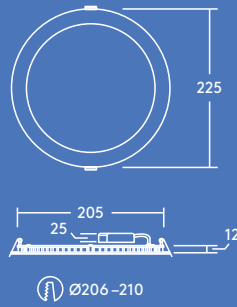
Offices and meeting rooms



Schools and universities

Light source information

- 600lm (8W), 900lm (12W) and 1500lm (18W), up to 85lm/W
- Color temperatures: 4000K and 3000K
- 25000 hour rated life (@L70B50, Ta 25°C)
- CRI80
- McAdam (initial): 4 step

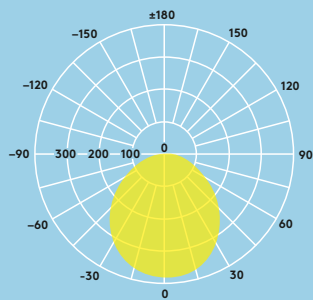


Lighting distribution

Zoe 900lm

cd/klm ULOR: 0% DLOR: 100% LOR: 100%

83lm/W



Ordering guide

Description	Wt (kg)	SAP Code
ZOE LED DL 110 600 840	0.25	96666088
ZOE LED DL 160 900 840	0.40	96666089
ZOE LED DL 210 1500 840	0.55	96666090
ZOE LED DL 110 600 830	0.25	96666092
ZOE LED DL 160 900 830	0.40	96666093
ZOE LED DL 210 1500 830	0.55	96666094

Accessories

Just Emergency PLUG&PLAY E3 Kit	96628839
Just Emergency PLUG&PLAY Self Test E3 Kit	96628840

830-3000K, 840-4000K

Installation/Mounting

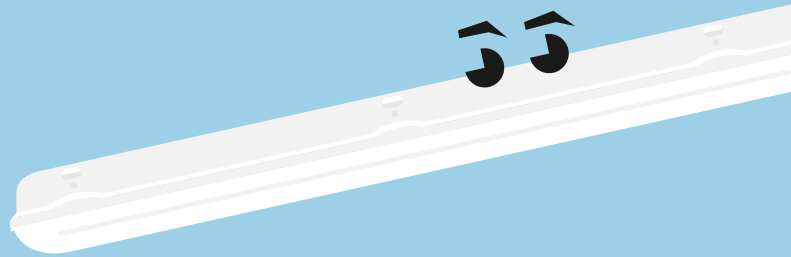
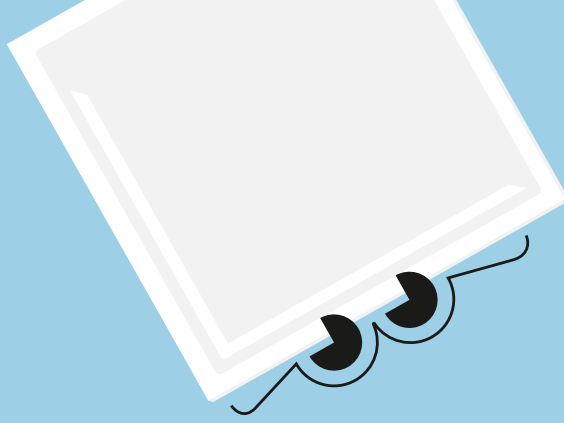
- Recessed installation into a wide range of ceiling types
- Easy installation thanks to an external connector box enabling loop-in loop-out wiring

Material/Finish

Body: Aluminum white finish
Diffuser: PS

Specification

- Class II electrical
- IP44
- IK02



thorneco



THORNecoLED



thorneco

thorn-eco.com

Thorn Lighting is constantly developing and improving its products. All descriptions, illustrations, drawings and specifications in this publication present only general particulars and shall not form part of any contract. The right is reserved to change specifications without prior notification or public announcement. All goods supplied by the company are supplied subject to the company's General Conditions of Sale, a copy of which is available on request. All measurements are in millimetres and weights in kilograms unless otherwise stated.

Publication Date: 09/2017

