

THORN



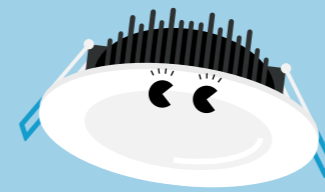
Economical LED lighting



Meet the family

Introducing our range of best in class, economical LED luminaires. They're the ideal like-for-like replacements for all lighting sources – from circulation and meeting areas, to storage facilities and car parks. Simple to install, longer lasting and energy saving, you'll be friends in no time.

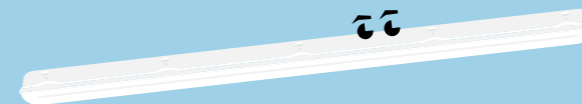
5 Five year warranty



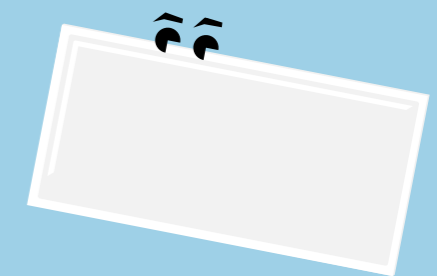
Chloe
LED downlight



George
LED high bay



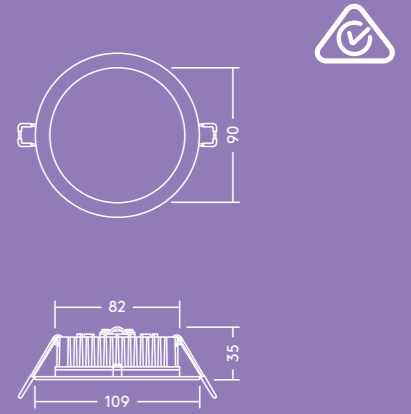
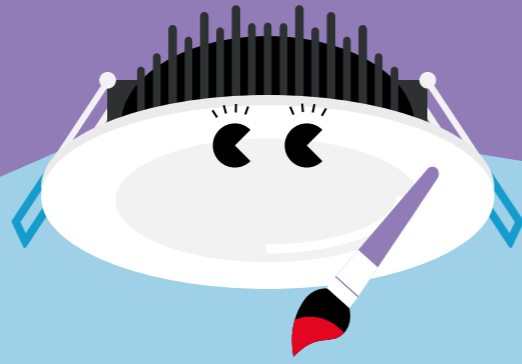
Julie
IP65 LED luminaire



Ruby
Recessed LED panel

Chloe

LED downlight



Meet Chloe

Versatile and durable, Chloe blends in a wide range of applications

- A slim ceiling recessed LED downlight with high color rendering
- Beam angle 90°
- Consistent light output with no shadowing
- External electronic: dimmable LED driver suitable with trailing edge and universal dimmers*
- Choice of 3000 K or 4000 K to suit application use
- Thermally optimised aluminium body
- Fitted with flex and plug

*see installation instructions for compatible dimmer list



700-800 lumens, up to 80 lm/W



30 000 hours lifetime



90 mm cut-out



IP44



Replacement for 1 x 18 W CFL

Ideal for...



Corridors



Reception areas



Offices and meeting rooms



Schools and universities

Light source information

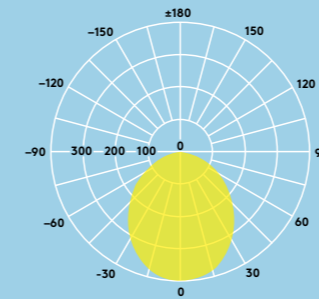
- Lifetime 30 000 hours (L70, Ta 25°C)
- 3000K: 700 lm (10 W), 70 lm/W
- 4000K: 800 lm (10 W), 80 lm/W
- CRI 80

Lighting distribution

Chloe 800lm

cd/klm ULOR: 0% DLOR: 100% LOR: 100%

80lm/W



Installation/Mounting

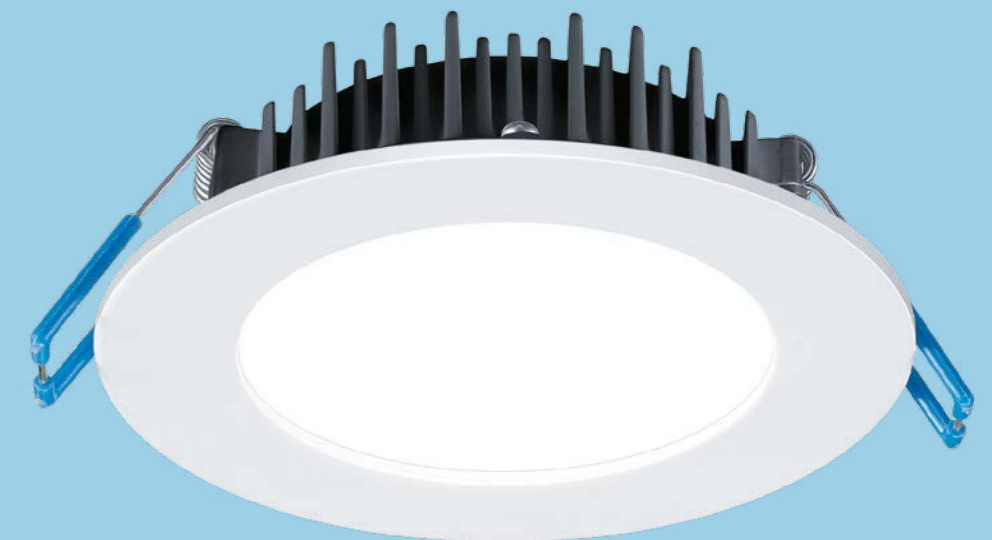
- Chloe LED can be installed into a wide range of ceiling types of 2–20 mm thickness

Material/Finish

Body: Aluminium, matt white finish
Diffuser: UV stabilized acrylic

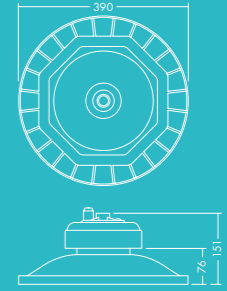
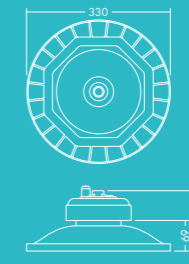
Specification

- Class II electrical
- IP44 (from below), IP20 (from above)
- IK02



George

LED high bay



Meet George

Reliable, efficient and bright, George feels comfortable in high ceilings

- George offers a simple, direct and cost-effective one-for-one replacement of traditional HID high bay luminaires
- Efficient LEDs (120 lm/W) combined with a lens technology offering a beam angle of 90° to reduce waste light
- With a long 50 000-hour lifetime, George eliminates the need for costly and disruptive lamp replacements
- The housing is carefully designed to allow air through the luminaire. This prevents the components from overheating and ensures optimum performance in industrial environments
- Supplied with 3 pin flex & plug (3m length)



12 000 – 30 000 lumens



50 000 hours lifetime



IK08 rated impact resistance



90° beam angle



IP65: Dust tight and water resistant



Save up to 50% energy compared to HID

Ideal for...



Retail outlets



Exhibition Halls



Warehouses

Light source information

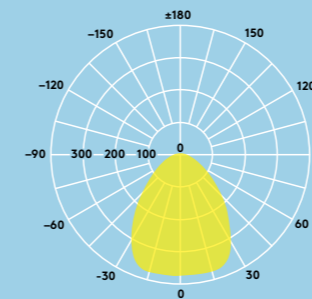
- Lifetime 50 000 hours (@L70B50, Ta 25°C)
- 12000 lm (100 W), 18000 lm (150 W), 24000 lm (200 W), 30000 lm (250 W), up to 120 lm/W
- Colour temperature: 4000 K
- CRI 80
- McAdams (initial): 5 step

Lighting distribution

George 12000 lm

cd/klm ULOR: 0% DLOR: 100% LOR: 100%

120 lm/W



Installation/Mounting

- Single point suspension (mounting hook supplied with luminaire)
- Stirrup for wall/ceiling mounting (available as accessory)

Material/Finish

Body: Aluminum die-cast, black (RAL9017)
Lens: PC

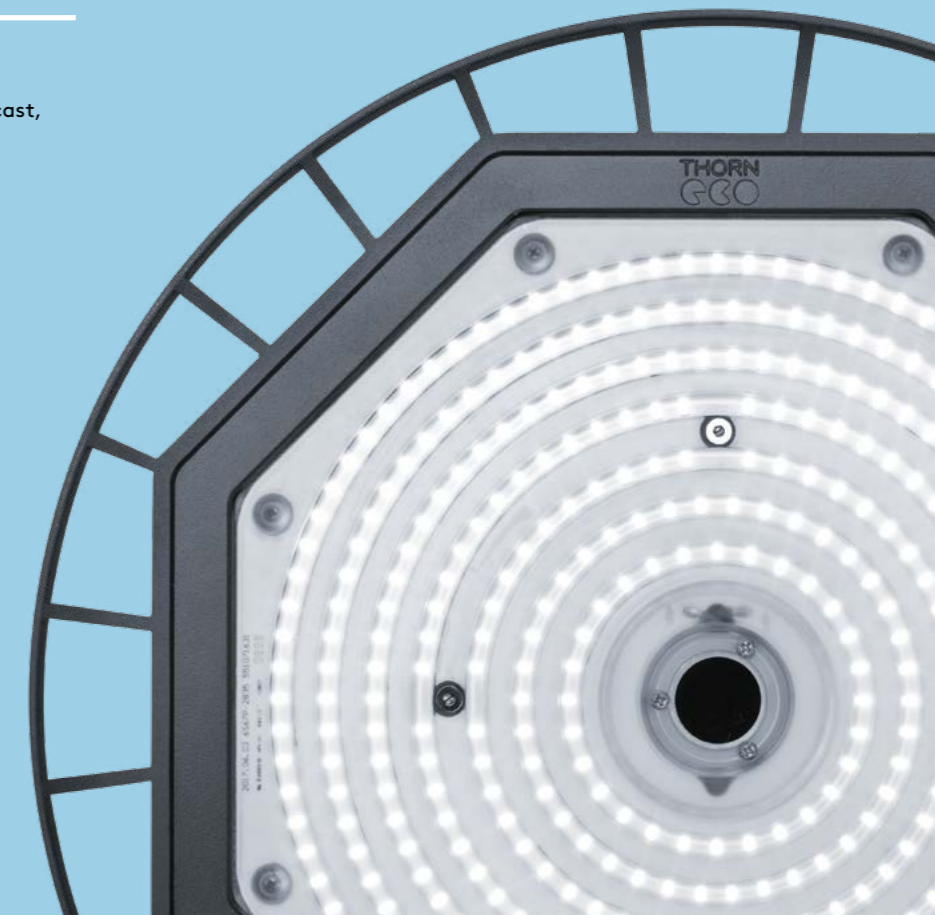
Specification

- Class I electrical
- IP65
- IK08
- Ambient operating temperature: -30 to +50°C

Ordering guide

| Description | Wt (kg) | SAP Code |
|---|---------|----------|
| GEORGE LED 330 12000 840 FP ¹ | 3.40 | 96629086 |
| GEORGE LED 330 18000 840 FP ² | 3.80 | 96629087 |
| GEORGE LED 390 24000 840 FP ³ | 6.00 | 96629088 |
| GEORGE LED 390 30000 840 FP ³ | 6.00 | 96629089 |
| Mounting brackets | | |
| SET OF GEORGE STIRRUP S (6pcs) ¹ | 0,37x6 | 96629371 |
| SET OF GEORGE STIRRUP M (6pcs) ² | 0,37x6 | 96629372 |
| SET OF GEORGE STIRRUP L (6pcs) ³ | 0,47x6 | 96629373 |

^{1,2,3}The small numbers indicate how to match fittings and mounting brackets.



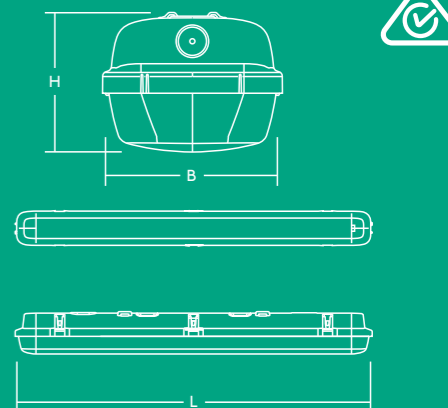
Julie

IP65 LED luminaire



L B H

| | | | |
|--------------------------|------|-----|----|
| JULIE 1200 LED IP65 4000 | 1232 | 103 | 78 |
| JULIE 1500 LED IP65 6000 | 1532 | 103 | 78 |



Meet Julie

With a tough exterior, Julie is the optimal choice for industrial and commercial applications

- High quality, low energy lighting in wet and dusty environments
- High quality opal diffuser for uniform lighting
- Ideal for replacement and refurbishment projects
- 4000lm (40W), 6000lm (60W), up to 100lm/W
- Colour Temperature 4000K



IP65:
Dust tight and water resistant



Save up to 60% energy compared to T8 fluorescent



IK08 rated impact resistance



Lengths of 1232 mm and 1532 mm



2h emergency version available



50 000 hours lifetime

Ideal for...



Car parks



Workshops



Underpasses



Storage facilities

Installation/Mounting

Suitable for surface mounting. 4x10 mm stainless steel self-tapping screws (not included) can be applied to prevent unauthorised opening of the luminaire.

Material/Finish

Canopy: Polycarbonate
Diffuser: Opal polycarbonate
Bracket: Stainless steel

Specification

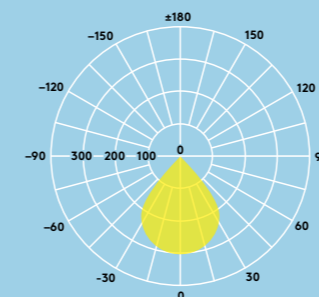
- Class I electrical
- IP65
- IK08
- Ambient operating temperature: -20 to +40°C STD, 0 to +25°C EL2

Lighting distribution

Julie LED 6000lm

cd/klm ULOR: 8% DLOR: 92% LOR: 100%

100lm/W



Light source information

- Life time 50 000 hours (@L70B50, Ta 25°C)
- 4000lm (40W), 6000lm (60W), up to 100lm/W
- Colour temperature 4000K
- CRI80
- McAdams (initial): 4 step

Ordering guide

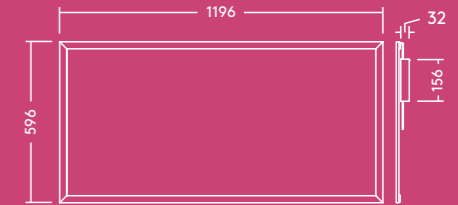
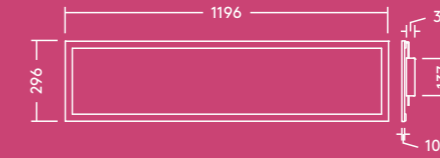
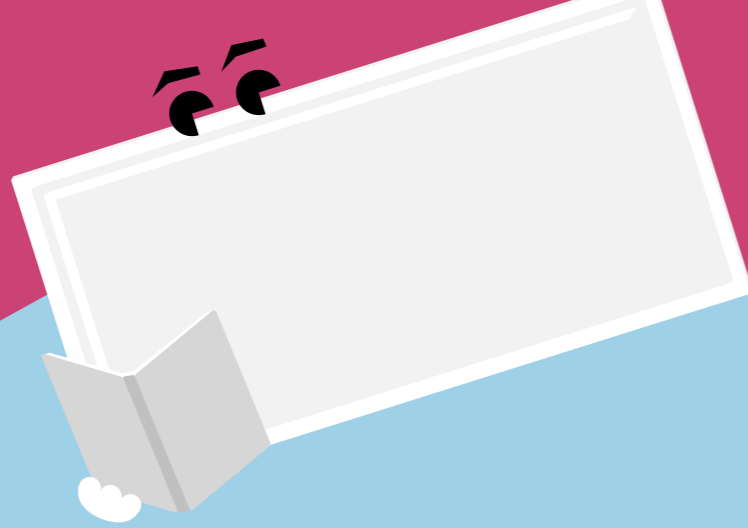
| Description | Wt (kg) | SAP Code |
|-----------------------------------|---------|----------|
| JULIE 1200 LED IP65 4000 840 | 1.50 | 96665577 |
| JULIE 1500 LED IP65 6000 840 | 1.95 | 96665580 |
| Emergency versions | | |
| JULIE 1200 LED IP65 4000 840 EL2* | 1.90 | 96646833 |
| Spare part | | |
| JULIE LED Spare Mount Kit | | 96628409 |

*AS 2293 Emergency Classification
C0 = D40, C90 = D25
2 Hour Maintained, LED Emergency Luminaire



Ruby

Recessed LED panel



Meet Ruby

Sophisticated and compact, Ruby creates a pleasant atmosphere in communication areas

- Elegant and lightweight design with a evenly lit surface
- Replaces conventional luminaires with 4 x 36W T8 and 2 x 36W T8 and offers more than 40% energy saving
- Ideal solution for any refurbishment job
- Supplied with 3 pin flex & plug (1.5m length)
- Suitable for recessed, surface and suspended mounting



3200 & 4500 lumens, up to 100lm/W



1200 x 300mm and 1200 x 600mm



50 000 hours lifetime

Ideal for...



Offices and meeting rooms



Schools and universities



Foyers and waiting-rooms

Light source information

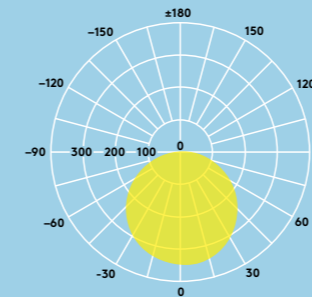
- 3200lm (32W), 4000K, 100 lm/W
- 4500lm (50W), 4000K, 90 lm/W
- CRI 80
- McAdam (initial): 4 step
- Beam angle: 110°

Lighting distribution

Ruby 3200lm

cd/klm ULOR: 0% DLOR: 100% LOR: 100%

100lm/W



Installation/Mounting

- Lay-in installation in T-bar ceiling grids
- Suitable for suspension and surface mounting (available as accessories)

Material/Finish

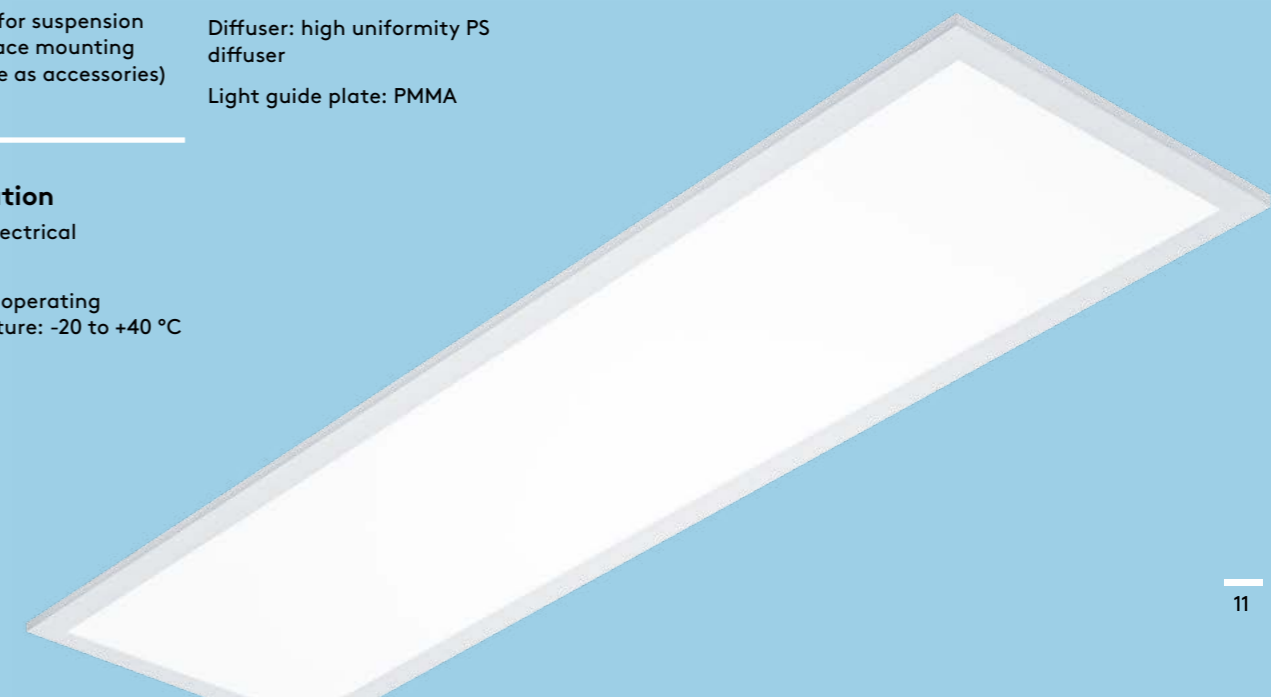
Body: Aluminum, white finish (RAL 9003)
Diffuser: high uniformity PS diffuser
Light guide plate: PMMA

Specification

- Class II electrical
- IP20
- Ambient operating temperature: -20 to +40 °C

Ordering guide

| Description | Wt (kg) | SAP Code |
|------------------------------------|---------|----------|
| RUBY LED 1200x300 3200 840 FP | 3.32 | 96628981 |
| RUBY LED 1200x600 4500 840 FP | 4.75 | 96628982 |
| Accessories | | |
| RUBY LED 1200 x 300 Suspension Kit | | 96629238 |
| RUBY LED 1200 x 600 Suspension Kit | | 96629085 |





Contact

Australia

NSW - Headquarters
ZG Lighting Australia Pty Ltd
43 Newton Road
Wetherill Park, NSW 2164
Australia
T +61 1300 139 965
E info.au@zumtobelgroup.com

NSW - Sales office
ZG Lighting Australia Pty Ltd
38 Oxley Street
Crows Nest, NSW 2065
Australia
T +61 1300 139 965
E info.au@zumtobelgroup.com

VIC
ZG Lighting Australia Pty Ltd
163 Epsom Road
Flemington, VIC 3031
Australia
T +61 1300 139 965
E info.au@zumtobelgroup.com

QLD
ZG Lighting Australia Pty Ltd
Level 1, 349 Coronation Drive
Milton, 4064 QLD
Australia
T +61 1300 139 965
E info.au@zumtobelgroup.com

WA
SCOPE LIGHTING PTY. LTD.
14 Christable Way
Landsdale, WA 6065
Australia
T +61 1300 139 965
E info.au@zumtobelgroup.com

SA
LEDA Lighting Solutions PTY. LTD.
3 Prescott Court
Hallett Cove, SA 5158
Australia
T +61 1300 139 965
E info.au@zumtobelgroup.com

TAS
Westport Agencies PTY. LTD.
12 Fleet Street
Moonah, TAS 7009
Australia
T +61 1300 139 965
E info.au@zumtobelgroup.com

NT
Global Lighting Solutions PTY. LTD.
Cnr Mataram St & Coonawarra Rd
Winnellie, NT 0820
Australia
T +61 1300 139 965
E info.au@zumtobelgroup.com

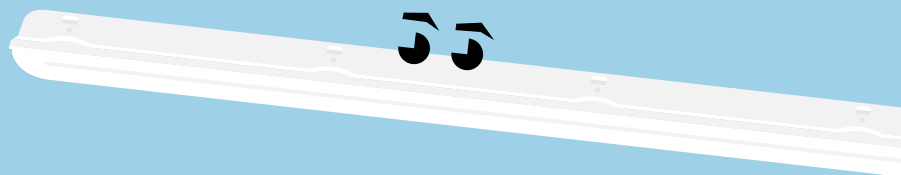
New Zealand

AUCKLAND - Headquarters
ZG Lighting (NZ) Limited
27 Jomac Place,
Avondale, Auckland 1026
New Zealand
T + 0800 800 834
T +64 (9) 828 7155
F +64 (9) 828 7591
E info.nz@zumtobelgroup.com

WELLINGTON
ZG Lighting (NZ) Limited
Level 2, 225 Thorndon Quay,
Pipitea, Wellington 6011
New Zealand
T + 0800 800 834
T +64 04 815 8010
F +64 04 499 6058
E info.nz@zumtobelgroup.com

CHRISTCHURCH
ZG Lighting (NZ) Limited
Unit 7A, 303 Blenheim Rd
Upper Riccarton, Christchurch 8041
New Zealand
T +64 03 366 2485
T + 0800 800 834
F +64 03 366 8905
E info.nz@zumtobelgroup.com

thorn-eco.com



Thorn Lighting is constantly developing and improving its products. All descriptions, illustrations, drawings and specifications in this publication present only general particulars and shall not form part of any contract. The right is reserved to change specifications without prior notification or public announcement. All goods supplied by the company are supplied subject to the company's General Conditions of Sale, a copy of which is available on request. All measurements are in millimetres and weights in kilograms unless otherwise stated.

Publication Date: 10/2017



[thorneco](https://twitter.com/thorneco)



[THORNecoLED](https://www.facebook.com/THORNecoLED)



[thorneco](https://vimeo.com/thorneco)

