

Just Emergency



Accessory

PLUG&PLAY E3 Kit

It was never quicker and easier to convert a luminaire for emergency operation!

- The Kit has been designed to enable conversion of general lighting for emergency operation.
- The Just Emergency consisting of an Emergency LED driver, a NiMH battery for 3h emergency duration and an indicator LED.
- You can choose between two Emergency PLUG&PLAY E3 Kits: One with DALI AutoTest® function and one without it.
- DALI AutoTest® provides benefits by enabling testing and monitoring of an emergency lighting system either on-site or via an internet connection and is ideal for monitoring larger buildings and multiple sites.
- Quick and easy to install Plug & Play solution, which eliminates complexity from emergency lighting

Compatible with:



Zoe



Anna

The battery

The NiMH battery incorporates SmartCharge™ technology consisting of an intermittent charge duty cycle when in charge maintenance mode. This provides energy efficient charging, reduced operating temperatures and optimum service life of the battery. Manufactured by Mackwell in UK.

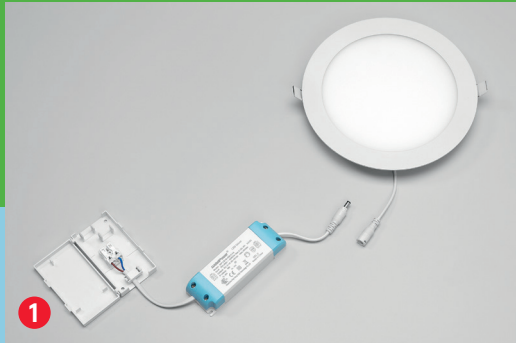
Battery specifications:

- SmartCharge™ technology for NiMH batteries
- 3-hour rated emergency duration
- deep-discharge protection
- charge current NiMH (4Ah): 200mA*
- Initial charge period: 24 h

General product information:

- Power: 4 W
- Rated supply voltage : 230V
- Supply current (Max) : 25mA
- Supply frequency : 50/60Hz
- Power factor : 0.5 – 0.7
- LED voltage (Vf) : 6 to 55V
- Ambient temperature (ta) : 0°C to +35°C
- Maximum case temperature (tc) : +70°C
- Weight : 420g

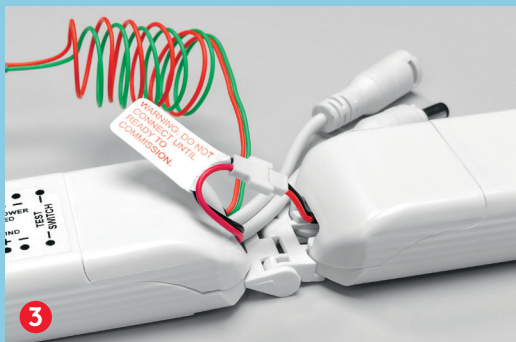
Description	Wt (kg)	SAP Code	Cat. No.
Just Emergency PLUG&PLAY E3 Kit	0.42	96628839	ECO3KIT
Just Emergency PLUG&PLAY SelfTest E3 Kit	0.42	96628840	ECO3TKIT



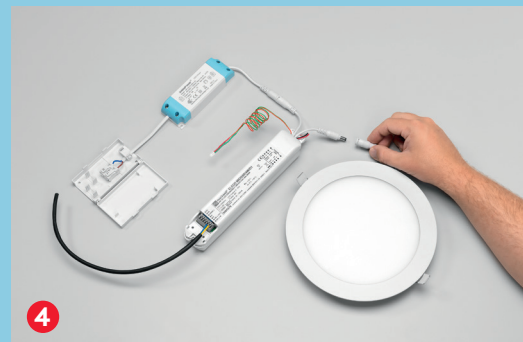
Unplug the connector between the Zoe slim downlight and the driver.



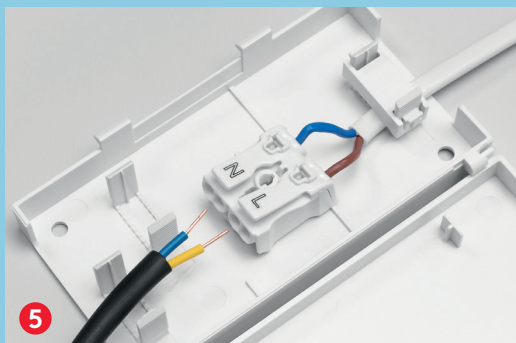
Just Emergency PLUG&PLAY E3 Kit consisting of an emergency LED driver, a battery and an indicator LED.



Connect the emergency LED driver to the battery.



Plug the emergency kit in-between the Zoe LED driver and the luminaire.



Take the cable, which is already connected to the emergency kit and plug it into the Zoe connector box (yellow cable: switched line out to L (phase conductor); blue cable: N to N (neutral conductor)).



Connect the mains cable to the emergency LED driver (neutral conductor and unswitched line) and fix the cables with the strain relief.



You're almost done - only one more step to consider!



Install the indicator LED in the ceiling next to the luminaire.