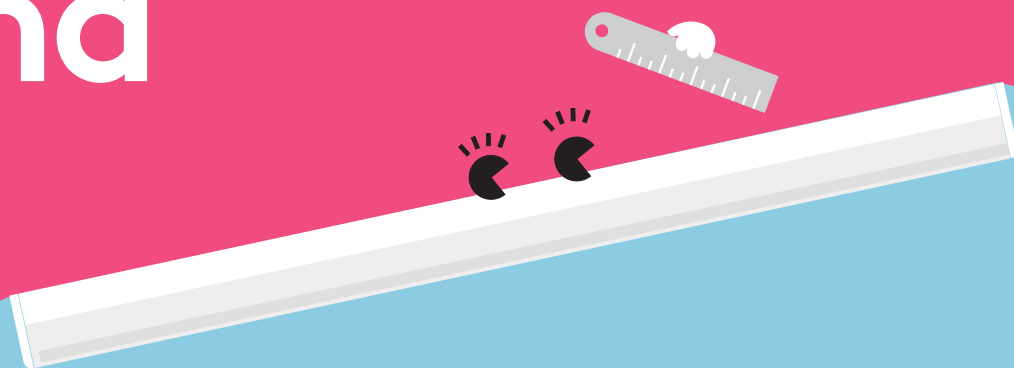


# Emma

## LED Batten



### Meet Emma

Sleek and sophisticated,  
Emma's effortless style  
fits right in

- Direct replacement for conventional battens in terms of light performance and length
- Reliable integrated LED technology, ensuring maintenance-free installation and a long lifetime
- Fully homogeneous illumination
- Elegant design: lightweight brushed aluminum profile
- High efficacy of up to 120 lm/W – exceeding building regulation requirements
- Flexible mounting brackets for any fixing hole distance
- Easy and tool-free installation thanks to an entry hatch on the back of the luminaire, which allows access to the push-terminal for wiring



2000, 4000  
and 6000  
lumens, up to  
120 lm/W



50 000 hours  
lifetime



Save up to  
50% energy  
compared with  
fluorescent  
battens



600 mm  
1200 mm  
and 1500 mm



IK08 rated  
impact  
resistance



3000K warm  
white or  
4000K neutral  
white

### Ideal for...



Breakout areas



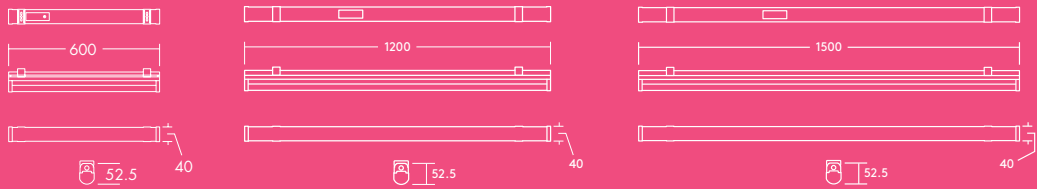
Circulation  
Corridors



Cove lighting

### Light source information

- 2000lm (25W), 4000lm (35W) and 6000lm (50W), up to 120lm/W
- Color temperature 3000K and 4000K
- 50 000 hour rated life (@L70B50, Ta 25°C)
- CRI 80
- McAdam (initial): 5 step

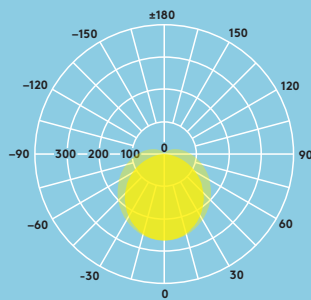


## Lighting distribution

### Emma 4000lm

cd/klm ULOR: 11% DLOR: 89% LOR: 100%

114lm/W  



## Ordering guide

Description	Wt (kg)	SAP Code
EMMA LED 1200 4000 840	0.8	96666098
EMMA LED 1500 6000 840	1.2	96666099
★ EMMA LED 1200 4000 830	0.8	96629750
★ EMMA LED 1500 6000 830	1.2	96629751
★ EMMA LED 600 2000 840	0.5	96666100
★ EMMA LED 600 2000 830	0.5	96630322

### Accessories

EMMA LED SUSPENSION KIT	96628615
-------------------------	----------

830 – 3000 K, 840 – 4000 K

★ New, available in spring 2018

### Installation/Mounting

- Surface mounting with surface mount brackets (included)
- Suspended mounting with suspension kit (optional)

### Material/Finish

Body: Aluminum  
 Diffuser: PC, opal white  
 End caps: PC, white (RAL 9016)  
 Ceiling clips: Stainless steel

### Specification

- Class I electrical
- IP20
- IK08

